

AIN 93G

Control diet for rodents – growth & reproduction

ssniff



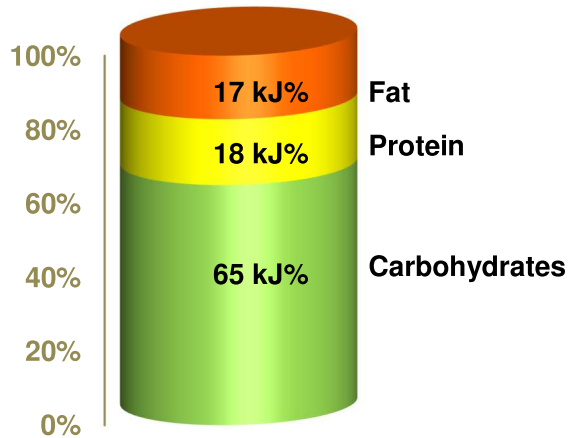
Description

This purified diet corresponds to the diet published by the American Institute of Nutrition (AIN). The diet was designed for growing and reproductive rats and mice. Although the concentrations of the macro- and micronutrient are low, all requirements will be met with that diet.

The diet is intended for ad libitum feeding. The animals should have free access to fresh water.

Gross Energy (GE) 18.9 MJ/kg
Metabolizable Energy (ME) ¹⁾ 16.2 MJ/kg

¹⁾ = Physiological fuel value (Atwater); correspond to 3,870 kcal/kg



Crude Nutrients	[%]
Crude protein (N x 6.25)	17.6
Crude fat	7.1
Crude fibre	5.0
Crude ash	3.2
Starch	38.2
Dextrin	13.1
Sugar	11.2
N free extracts	63.1

Minerals	[%]	Amino acids	[%]	Vitamins	per kg
Calcium	0.55	Lysine	1.47	Vitamin A	4,000 IU
Phosphorus	0.37	Methionine	0.55	Vitamin D ₃	1,000 IU
Ca / P	1.50 : 1	Cystine	0.37	Vitamin E	75 mg
Sodium	0.15	Met+Cys	0.92	Vitamin K (as MNB)	4 mg
Magnesium	0.10	Threonine	0.78	Thiamine (B ₁)	12 mg
Potassium	0.55	Tryptophan	0.23	Riboflavin (B ₂)	16 mg
		Arginine	0.69	Pyridoxine (B ₆)	7 mg
Fatty acids	[%]	Histidine	0.53	Cobalamin (B ₁₂)	25 µg
C 12:0	—	Valine	1.23	Nicotinic acid	29 mg
C 14:0	0.02	Isoleucine	1.00	Pantothenic acid	15 mg
C 16:0	0.84	Leucine	1.75	Folic acid	2 mg
C 17:0	0.01	Phenylalanine	0.92	Biotin	200 µg
C 18:0	0.26	Phe+Tyr	1.85	Choline	1,130 mg
C 20:0	0.03	Glycine	0.35		
C 16:1	0.01	Glutamic acid	3.97	Trace elements	per kg
C 18:1	1.78	Aspartic acid	1.31	Iron	49 mg
C 18:2	3.69	Proline	2.02	Manganese	22 mg
C 18:3	0.41	Serine	1.06	Zinc	41 mg
		Alanine	0.53	Copper	10 mg
				Iodine	0.3 mg
				Selenium	0.2 mg

Main products

E15712-00 Meal / Powder
 E15712-04 10 mm pellets
 E15712-047 10 mm pellets, γ-irradiated 25 kGy
Extra vitamin fortification for high dose irradiation (50 kGy)

Production and Sale

ssniff Spezialdiäten GmbH
 Phone: +49-(0)2921-9658-0
 Fax: +49-(0)2921-9658-40
 E-Mail mail@ssniff.de
www.ssniff.de / www.ssniff.com

AIN 93G – Water soluble

Control diet for rodents – growth & reproduction

ssniff



Description

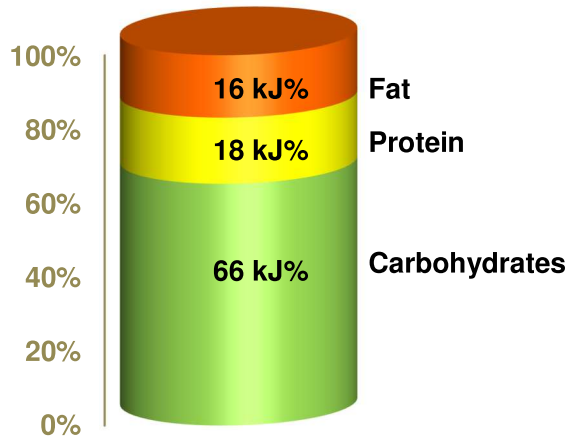
This purified diet is the water soluble equivalent to the conventional AIN 93G. The major differences between both diets are the replacement of the starch component by maltodextrin, a higher vitamin fortification and the addition of xanthan gum.

The diet can be suspended in water at a concentration of about 220 – 260 g powder/L water.

The diet is intended for ad libitum feeding.

Gross Energy (GE) **19.1 MJ/kg**
Metabolizable Energy (ME) ¹⁾ **16.4 MJ/kg**

¹⁾ = Physiological fuel value (Atwater); correspond to 3,920 kcal/kg



Crude Nutrients	[%]
Crude protein (N x 6.25)	17.6
Crude fat	7.1
Crude fibre	5.0
Crude ash	3.3
Starch	0.2
Dextrin	50.5
Sugar	11.7
N free extracts	64.4

Minerals	[%]
Calcium	0.56
Phosphorus	0.37
Ca / P	1.51 : 1
Sodium	0.15
Magnesium	0.10
Potassium	0.56

Amino acids	[%]
Lysine	1.47
Methionine	0.55
Cystine	0.37
Met+Cys	0.92
Threonine	0.78
Tryptophan	0.23
Arginine	0.69
Histidine	0.53
Valine	1.23
Isoleucine	1.00
Leucine	1.75
Phenylalanine	0.92
Phe+Tyr	1.85
Glycine	0.35
Glutamic acid	3.97
Aspartic acid	1.31
Proline	2.02
Serine	1.06
Alanine	0.53

Vitamins	per kg
Vitamin A	5,200 IU
Vitamin D ₃	1,300 IU
Vitamin E	98 mg
Vitamin K (as MNB)	5 mg
Thiamine (B ₁)	16 mg
Riboflavin (B ₂)	26 mg
Pyridoxine (B ₆)	8 mg
Cobalamin (B ₁₂)	33 µg
Nicotinic acid	39 mg
Pantothenic acid	20 mg
Folic acid	3 mg
Biotin	260 µg
Choline	1,350 mg

Fatty acids	[%]
C 12:0	—
C 14:0	0.02
C 16:0	0.84
C 17:0	0.01
C 18:0	0.26
C 20:0	0.03
C 16:1	0.01
C 18:1	1.78
C 18:2	3.69
C 18:3	0.41

Trace elements	per kg
Iron	49 mg
Manganese	22 mg
Zinc	41 mg
Copper	10 mg
Iodine	0.3 mg
Selenium	0.2 mg

Main products

E15712-10 Meal / Powder
 E15712-107 Meal / Powder, γ-irradiated 25 kGy

Production and Sale

ssniff Spezialdiäten GmbH
 Phone: +49-(0)2921-9658-0
 Fax: +49-(0)2921-9658-40
 E-Mail mail@ssniff.de
www.ssniff.de / www.ssniff.com

AIN 93M

Control diet for rodents – maintenance

ssniff



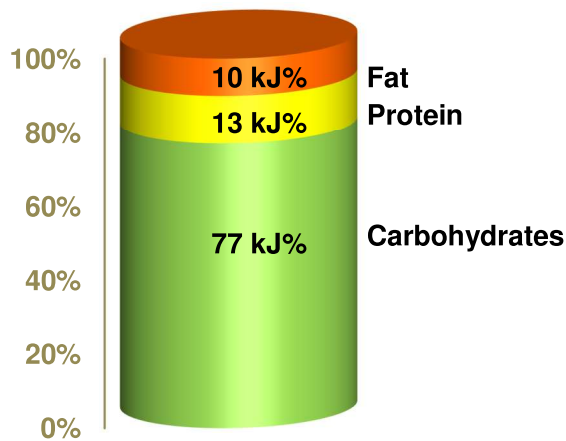
Description

This purified diet corresponds to the diet published by the American Institute of Nutrition (AIN). The diet was designed for the maintenance of rats and mice. Although the concentrations of the macro- and micronutrient are low, all requirements will be met with that diet.

The diet is intended for ad libitum feeding. The animals should have free access to fresh water.

Gross Energy (GE) 18.0 MJ/kg
Metabolizable Energy (ME) ¹⁾ 15.6 MJ/kg

¹⁾ = Physiological fuel value (Atwater); correspond to 3,735 kcal/kg



Crude Nutrients	[%]
Crude protein (N x 6.25)	12.3
Crude fat	4.1
Crude fibre	5.0
Crude ash	3.1
Starch	44.8
Dextrin	15.3
Sugar	11.2
N free extracts	71.8

Minerals	[%]	Amino acids	[%]	Vitamins	per kg
Calcium	0.55	Lysine	1.03	Vitamin A	4,000 IU
Phosphorus	0.36	Methionine	0.38	Vitamin D ₃	1,000 IU
Ca / P	1.55 : 1	Cystine	0.23	Vitamin E	75 mg
Sodium	0.16	Met+Cys	0.61	Vitamin K (as MNB)	4 mg
Magnesium	0.09	Threonine	0.54	Thiamine (B ₁)	12 mg
Potassium	0.54	Tryptophan	0.16	Riboflavin (B ₂)	16 mg
		Arginine	0.69	Pyridoxine (B ₆)	7 mg
Fatty acids	[%]	Histidine	0.37	Cobalamin (B ₁₂)	25 µg
C 12:0	—	Valine	0.86	Nicotinic acid	29 mg
C 14:0	0.02	Isoleucine	0.70	Pantothenic acid	15 mg
C 16:0	0.50	Leucine	1.23	Folic acid	2 mg
C 17:0	0.01	Phenylalanine	0.64	Biotin	200 µg
C 18:0	0.15	Phe+Tyr	1.29	Choline	980 mg
C 20:0	0.02	Glycine	0.25		
C 16:1	0.01	Glutamic acid	2.78	Trace elements	per kg
C 18:1	1.03	Aspartic acid	0.92	Iron	47 mg
C 18:2	2.11	Proline	1.41	Manganese	21 mg
C 18:3	0.23	Serine	0.74	Zinc	39 mg
		Alanine	0.37	Copper	10 mg
				Iodine	0.3 mg
				Selenium	0.2 mg

Main products

E15713-00 Meal / Powder
 E15713-04 10 mm pellets
 E15713-047 10 mm pellets, γ-irradiated 25 kGy

Production and Sale

ssniff Spezialdiäten GmbH
 Phone: +49-(0)2921-9658-0
 Fax: +49-(0)2921-9658-40
 E-Mail mail@ssniff.de
www.ssniff.de / www.ssniff.com