

Rabbit – atherogenic

ssniff

High fat atherogenic diet for rabbits | 4.7 % coconut oil, 0.3 % cholesterol



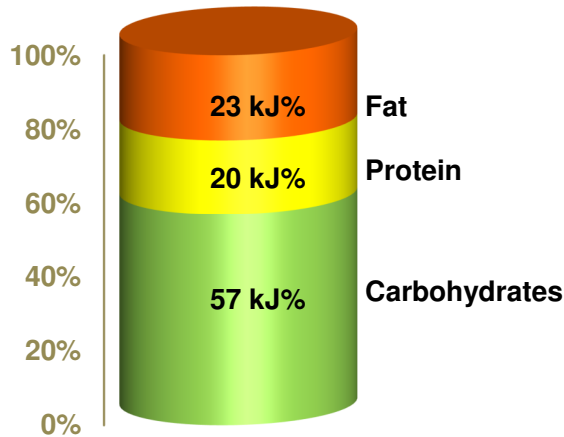
Description

This chow based diet has been supplemented with hydrogenated coconut oil and 0.3 % cholesterol. The diet will therefore induce atherogenic lesions (plaques) in rabbits.

*The diet is intended for ad libitum feeding together with hay or hay products.
The animals should have free access to fresh water.*

Gross Energy (GE) 16.9 MJ/kg
Metabolizable Energy (ME) ¹⁾ 12.9 MJ/kg

¹⁾ = Physiological fuel value (Atwater); correspond to 3,090 kcal/kg



| Crude Nutrients | [%] |
|--------------------------|------|
| Crude protein (N x 6.25) | 15.1 |
| Crude fat | 8.0 |
| Crude fibre | 14.3 |
| NDF | 29.4 |
| ADF | 17.0 |
| Crude ash | 7.6 |
| Starch | 16.3 |
| Sugar | 6.3 |
| N free extracts | 44.0 |

| Minerals | [%] |
|------------|----------|
| Calcium | 1.09 |
| Phosphorus | 0.64 |
| Ca / P | 1.70 : 1 |
| Sodium | 0.21 |
| Magnesium | 0.24 |
| Potassium | 1.50 |

| Amino acids | [%] |
|---------------|------|
| Lysine | 0.78 |
| Methionine | 0.34 |
| Cystine | 0.26 |
| Met+Cys | 0.60 |
| Threonine | 0.58 |
| Tryptophan | 0.19 |
| Arginine | 0.82 |
| Histidine | 0.35 |
| Valine | 0.75 |
| Isoleucine | 0.61 |
| Leucine | 1.07 |
| Phenylalanine | 0.65 |
| Phe+Tyr | 1.04 |
| Glycine | 0.69 |
| Glutamic acid | 2.55 |
| Aspartic acid | 1.29 |
| Proline | 0.96 |
| Serine | 0.67 |
| Alanine | 0.76 |

| Vitamins | per kg |
|------------------------------|-----------|
| Vitamin A | 15,000 IU |
| Vitamin D ₃ | 1,100 IU |
| Vitamin E | 125 mg |
| Vitamin K (as MNB) | 8 mg |
| Thiamine (B ₁) | 16 mg |
| Riboflavin (B ₂) | 26 mg |
| Pyridoxine (B ₆) | 21 mg |
| Cobalamin (B ₁₂) | 100 µg |
| Nicotinic acid | 120 mg |
| Pantothenic acid | 44 mg |
| Folic acid | 7 mg |
| Biotin | 650 µg |
| Choline | 1150 mg |

| Fatty acids | [%] |
|-------------|------|
| C 8:0 | 0.28 |
| C 10:0 | 0.23 |
| C 12:0 | 2.19 |
| C 14:0 | 0.95 |
| C 16:0 | 1.04 |
| C 18:0 | 0.69 |
| C 20:0 | 0.02 |
| C 16:1 | 0.02 |
| C 18:1 | 0.55 |
| C 18:2 | 1.58 |
| C 18:3 | 0.30 |

Cholesterol 3,000 mg/kg

| Trace elements | per kg |
|----------------|--------|
| Iron | 295 mg |
| Manganese | 63 mg |
| Zinc | 85 mg |
| Copper | 15 mg |
| Iodine | 2.1 mg |
| Selenium | 0.4 mg |

Main products

E23112-33 4 mm pellets

E23112-337 4 mm pellets, γ-irradiated 25 kGy

Higher cholesterol addition on request

Production and Sale

ssniff Spezialdiäten GmbH

Phone: +49-(0)2921-9658-0

Fax: +49-(0)2921-9658-40

E-Mail mail@ssniff.de

www.ssniff.de / www.ssniff.com

Rabbit – atherogenic

ssniff

High fat atherogenic diet for rabbits | 4.9 % coconut oil, 1 % cholesterol



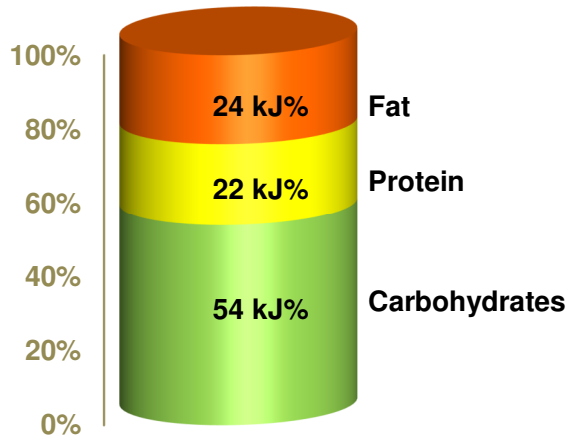
Description

This chow based diet has been supplemented with hydrogenated coconut oil and 1 % cholesterol. The diet will therefore induce atherogenic lesions (plaques) in rabbits.

*The diet is intended for ad libitum feeding together with hay or hay products.
The animals should have free access to fresh water.*

Gross Energy (GE) 17.0 MJ/kg
Metabolizable Energy (ME) ¹⁾ 13.1 MJ/kg

¹⁾ = Physiological fuel value (Atwater); correspond to 3,135 kcal/kg



| Crude Nutrients | [%] |
|--------------------------|------|
| Crude protein (N x 6.25) | 17.5 |
| Crude fat | 8.3 |
| Crude fibre | 12.7 |
| NDF | 26.7 |
| ADF | 15.4 |
| Crude ash | 7.5 |
| Starch | 18.0 |
| Sugar | 4.4 |
| N free extracts | 42.2 |

| Minerals | [%] | Amino acids | [%] | Vitamins | per kg |
|-------------|--------------|---------------|------|------------------------------|---------------|
| Calcium | 1.15 | Lysine | 1.08 | Vitamin A | 24,500 IU |
| Phosphorus | 0.65 | Methionine | 0.43 | Vitamin D ₃ | 1,500 IU |
| Ca / P | 1.77 : 1 | Cystine | 0.29 | Vitamin E | 145 mg |
| Sodium | 0.19 | Met+Cys | 0.72 | Vitamin K (as MNB) | 20 mg |
| Magnesium | 0.23 | Threonine | 0.68 | Thiamine (B ₁) | 80 mg |
| Potassium | 1.52 | Tryptophan | 0.22 | Riboflavin (B ₂) | 35 mg |
| | | Arginine | 0.96 | Pyridoxine (B ₆) | 30 mg |
| | | Histidine | 0.42 | Cobalamin (B ₁₂) | 150 µg |
| | | Valine | 0.87 | Nicotinic acid | 140 mg |
| | | Isoleucine | 0.72 | Pantothenic acid | 62 mg |
| | | Leucine | 1.27 | Folic acid | 10 mg |
| | | Phenylalanine | 0.78 | Biotin | 820 µg |
| | | Phe+Tyr | 1.28 | Choline | 1150 mg |
| | | Glycine | 0.79 | | |
| | | Glutamic acid | 3.12 | Trace elements | per kg |
| | | Aspartic acid | 1.63 | Iron | 285 mg |
| | | Proline | 1.16 | Manganese | 63 mg |
| | | Serine | 0.84 | Zinc | 85 mg |
| | | Alanine | 0.85 | Copper | 15 mg |
| | | | | Iodine | 2.1 mg |
| | | | | Selenium | 0.4 mg |
| Cholesterol | 10,000 mg/kg | | | | |

Main products

E23113-23 4 mm pellets
E23113-237 4 mm pellets, γ-irradiated 25 kGy

Production and Sale

ssniff Spezialdiäten GmbH
Phone: +49-(0)2921-9658-0
Fax: +49-(0)2921-9658-40
E-Mail mail@ssniff.de
www.ssniff.de / www.ssniff.com