

Mouse Breeding diet with **doxycycline**

ssniff

Low Phytoestrogen content/soybean free

Complete feed for mice (& rats) with DOX as doxycycline hyclate



Description

These doxycycline (DOX) supplemented diets base on a standard chow with low phytoestrogen contents (traces only). DOX is added as DOX hyclate at concentrations between 200 and 2,000 mg DOX/kg; other concentrations and/or dye additions are possible upon request.

*Please store the diet at cool and dry conditions and protected from sun light.
The diet is intended for ad libitum feeding. The animals should have free access to fresh water.*

Gross Energy (GE)

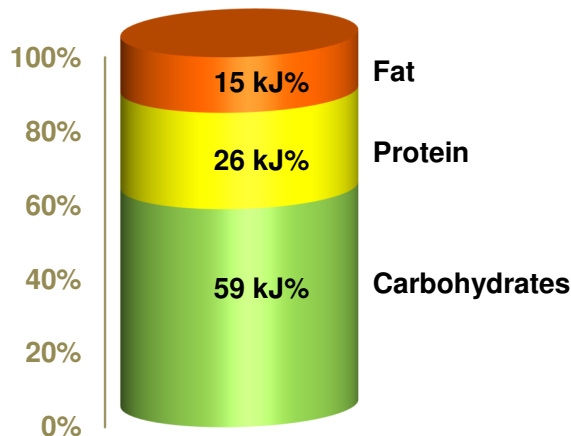
17.1 MJ/kg

Metabolizable Energy (ME)¹⁾

14.3 MJ/kg

¹⁾ = Physiological fuel value (Atwater); correspond to 3,410 kcal/kg

ME - pig = 13.7 MJ/kg (old: 13.5 MJ/kg)



Crude Nutrients

Crude Nutrients	[%]
Crude protein (N x 6.25)	22.2
Crude fat	5.5
Crude fibre	4.4
NDF	17.9
ADF	6.1
Crude ash	5.9
Starch	31.9
Sugar	3.4
N free extracts	50.7

Minerals

Minerals	[%]
Calcium	1.00
Phosphorus	0.70
Ca / P	1.43 : 1
Sodium	0.22
Magnesium	0.23
Potassium	0.71

Amino acids

Amino acids	[%]
Lysine	1.35
Methionine	0.52
Cystine	0.42
Met+Cys	0.94
Threonine	0.95
Tryptophan	0.27
Arginine	1.15
Histidine	0.54
Valine	1.23
Isoleucine	0.98
Leucine	2.09
Phenylalanine	1.19
Phe+Tyr	2.16
Glycine	1.05
Glutamic acid	4.10
Aspartic acid	2.05
Proline	1.65
Serine	1.16
Alanine	1.30

Vitamins

Vitamins	per kg
Vitamin A	25,000 IU
Vitamin D ₃	1,500 IU
Vitamin E	135 mg
Vitamin K (as MNB)	20 mg
Thiamine (B ₁)	85 mg
Riboflavin (B ₂)	32 mg
Pyridoxine (B ₆)	30 mg
Cobalamin (B ₁₂)	150 µg
Nicotinic acid	160 mg
Pantothenic acid	59 mg
Folic acid	9 mg
Biotin	720 µg
Choline	1,290 mg

Fatty acids

Fatty acids	[%]
C 12:0	—
C 14:0	0.01
C 16:0	0.70
C 18:0	0.17
C 20:0	0.02
C 16:1	0.03
C 18:1	1.22
C 18:2	3.02
C 18:3	0.34

Trace elements

Trace elements	per kg
Iron	192 mg
Manganese	65 mg
Zinc	94 mg
Copper	15 mg
Iodine	2.1 mg
Selenium	0.4 mg

Product No.	DOX / DOX hyclate	Pellet / sterilis.	Food dye
A115D00200	200 / 230 mg/kg	10 mm / non	—
A115D70200	200 / 230 mg/kg	10 mm / 25 kGy	—
A115D00621	625 / 720 mg/kg	10 mm / non	Blue
A115D70621	625 / 720 mg/kg	10 mm / 25 kGy	Blue
A115D02003	2000 / 2300 mg/kg	10 mm / non	Green
A115D72003	2000 / 2300 mg/kg	10 mm / 25 kGy	Green

Production and Sale

ssniff Spezialdiäten GmbH
 Phone: +49-(0)2921-9658-0
 Fax: +49-(0)2921-9658-40
 E-Mail: mail@ssniff.de
www.ssniff.de / www.ssniff.com

Mouse Breeding with **doxycycline**

ssniff

Complete feed for mice (& rats) with DOX as doxycycline hyclate



Description

These doxycycline (DOX) supplemented diets are based on a standard chow. DOX is added as DOX hyclate: There exist many standard concentrations (see examples below); however, any concentration and dye additions are possible upon request.

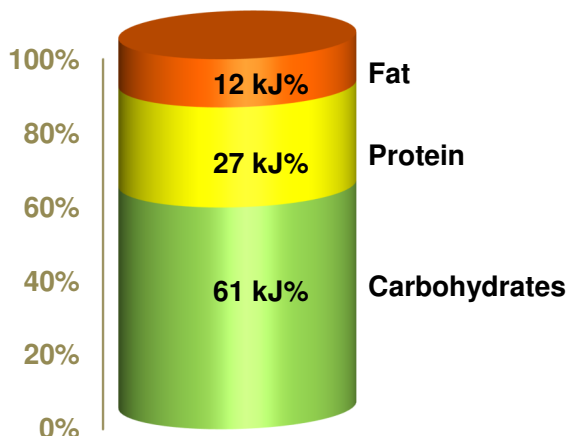
*Please store the diet at cool and dry conditions and protected from sun light.
The diet is intended for ad libitum feeding. The animals should have free access to fresh water.*

Gross Energy (GE) **16.7 MJ/kg**

Metabolizable Energy (ME)¹⁾ **14.0 MJ/kg**

¹⁾ = Physiological fuel value (Atwater);
correspond to 3,338 kcal/kg

ME - pig = 13.6 MJ/kg (old: 13.6 MJ/kg)



Crude Nutrients	[%]
Crude protein (N x 6.25)	22.0
Crude fat	4.5
Crude fibre	3.9
NDF	13.1
ADF	6.0
Crude ash	6.2
Starch	34.2
Sugar	5.1
N free extracts	51.2

Minerals	[%]
Calcium	1.00
Phosphorus	0.70
Ca / P	1.43 : 1
Sodium	0.24
Magnesium	0.21
Potassium	0.98

Fatty acids	[%]
C 12:0	—
C 14:0	0.01
C 16:0	0.54
C 18:0	0.14
C 20:0	0.02
C 16:1	0.02
C 18:1	1.03
C 18:2	2.42
C 18:3	0.28

Amino acids	[%]
Lysine	1.48
Methionine	0.50
Cystine	0.39
Met+Cys	0.89
Threonine	0.83
Tryptophan	0.28
Arginine	1.38
Histidine	0.57
Valine	1.06
Isoleucine	0.95
Leucine	1.67
Phenylalanine	1.04
Phe+Tyr	1.77
Glycine	0.98
Glutamic acid	4.56
Aspartic acid	2.20
Proline	1.38
Serine	1.17
Alanine	1.01

Vitamins	per	kg
Vitamin A	25,000	IU
Vitamin D ₃	1,500	IU
Vitamin E	135	mg
Vitamin K (as MNB)	20	mg
Thiamine (B ₁)	86	mg
Riboflavin (B ₂)	33	mg
Pyridoxine (B ₆)	31	mg
Cobalamin (B ₁₂)	150	µg
Nicotinic acid	140	mg
Pantothenic acid	59	mg
Folic acid	10	mg
Biotin	690	µg
Choline	1,400	mg

Trace elements	per	kg
Iron	192	mg
Manganese	64	mg
Zinc	91	mg
Copper	15	mg
Iodine	2.1	mg
Selenium	0.3	mg

Product No.	DOX / DOX hyclate	Pellet / sterilis.	Food dye
A112D00103	100 / 115 mg/kg	10 mm / non	Green
A112D70103	100 / 115 mg/kg	10 mm / 25 kGy	Green
A112D00200	200 / 230 mg/kg	10 mm / non	—
A112D70203	200 / 230 mg/kg	10 mm / 25 kGy	Green
A112D00623	625 / 720 mg/kg	10 mm / non	Green
A112D70624	625 / 720 mg/kg	10 mm / 25 kGy	Red
A112D02003	2000 / 2300 mg/kg	10 mm / non	Green
A112D72003	2000 / 2300 mg/kg	10 mm / 25 kGy	Green

Production and Sale

ssniff Spezialdiäten GmbH
Phone: +49-(0)2921-9658-0
Fax: +49-(0)2921-9658-40
E-Mail: mail@ssniff.de
www.ssniff.de / www.ssniff.com

Rat/Mouse diet with **doxycycline**

Low Phytoestrogen content/soybean free

ssniff

Complete feed (fortified) for rats and mice with DOX as doxycycline hyclate

Description

These doxycycline (DOX) supplemented diets are based on a standard chow with low phytoestrogen contents (traces only). DOX is added as DOX hyclate (87 %): There exist some standard concentrations; however, any concentration and dye additions are possible upon request.

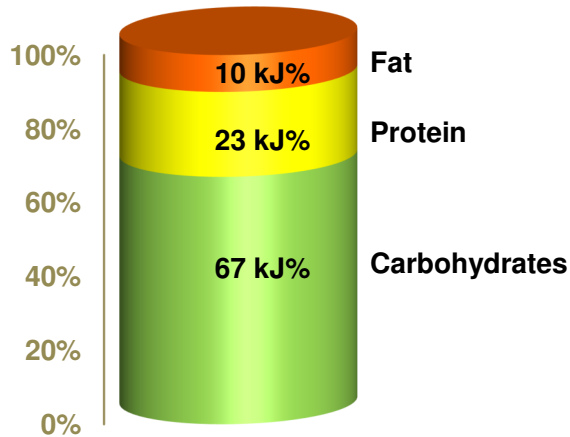
*Please store the diet at cool and dry conditions and protected from sun light.
The diet is intended for ad libitum feeding. The animals should have free access to fresh water.*



Gross Energy (GE) 16.4 MJ/kg
Metabolizable Energy (ME) ¹⁾ 13.7 MJ/kg

¹⁾ = Physiological fuel value (Atwater); correspond to 3,275 kcal/kg

ME - pig = 13.0 MJ/kg (old: 12.7 MJ/kg)



Crude Nutrients	[%]
Crude protein (N x 6.25)	19.1
Crude fat	3.4
Crude fibre	4.6
NDF	20.6
ADF	6.5
Crude ash	6.0
Starch	34.5
Sugar	3.3
N free extracts	55.1

Minerals	[%]
Calcium	1.00
Phosphorus	0.70
Ca / P	1.43 : 1
Sodium	0.23
Magnesium	0.22
Potassium	0.73

Amino acids	[%]
Lysine	1.04
Methionine	0.37
Cystine	0.37
Met+Cys	0.74
Threonine	0.81
Tryptophan	0.24
Arginine	1.01
Histidine	0.46
Valine	1.04
Isoleucine	0.84
Leucine	1.64
Phenylalanine	1.00
Phe+Tyr	1.80
Glycine	0.91
Glutamic acid	3.68
Aspartic acid	1.74
Proline	1.42
Serine	0.99
Alanine	1.10

Vitamins	per	kg
Vitamin A	25,000	IU
Vitamin D ₃	1,500	IU
Vitamin E	135	mg
Vitamin K (as MNB)	20	mg
Thiamine (B ₁)	86	mg
Riboflavin (B ₂)	31	mg
Pyridoxine (B ₆)	30	mg
Cobalamin (B ₁₂)	150	µg
Nicotinic acid	149	mg
Pantothenic acid	57	mg
Folic acid	9	mg
Biotin	660	µg
Choline	1,370	mg

Fatty acids	[%]
C 12:0	—
C 14:0	0.01
C 16:0	0.45
C 18:0	0.07
C 20:0	0.01
C 16:1	0.01
C 18:1	0.62
C 18:2	1.85
C 18:3	0.22

Trace elements	per	kg
Iron	184	mg
Manganese	75	mg
Zinc	98	mg
Copper	14	mg
Iodine	2.1	mg
Selenium	0.4	mg

Product No.	DOX / DOX hyclate	Pellet / sterilis.	Food dye
A155D00200	200 / 230 mg/kg	10 mm / non	—
A155D00201	200 / 230 mg/kg	10 mm / non	Blue
A155D70201	200 / 230 mg/kg	10 mm / 25 kGy	Blue
A155D00623	625 / 720 mg/kg	10 mm / non	Green
A155D70623	625 / 720 mg/kg	10 mm / 25 kGy	Green

Production and Sale

ssniff Spezialdiäten GmbH
Phone: +49-(0)2921-9658-0
Fax: +49-(0)2921-9658-40
E-Mail: mail@ssniff.de
www.ssniff.de / www.ssniff.com

Rat/Mouse diet with **doxycycline**

ssniff

Complete feed (fortified) for rats and mice with DOX as doxycycline hyclate



Description

The doxycycline (DOX) supplemented diets are based on a standard chow (maintenance). DOX is added as DOX hyclate (87 % DOX) at various concentrations. Any concentration and addition of dyes are possible upon request (some examples are given below).

Please store the diet at cool and dry conditions and protected from light.

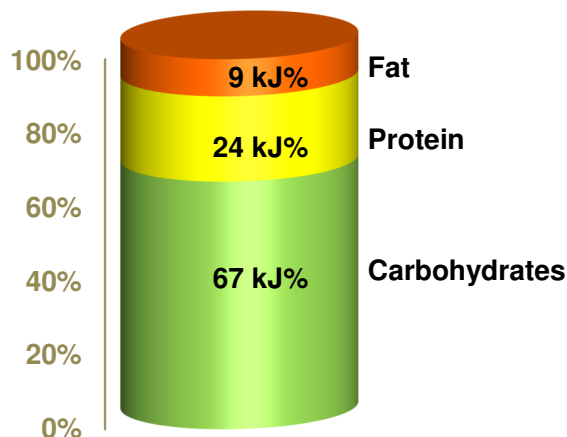
The diet is intended for ad libitum feeding. The animals should have free access to fresh water.

Gross Energy (GE) **16.2 MJ/kg**

Metabolizable Energy (ME) ¹⁾ **13.5 MJ/kg**

¹⁾ = Physiological fuel value (Atwater); correspond to 3,230 kcal/kg

ME - pig = 12.7 MJ/kg (old: 12.8 MJ/kg)



Crude Nutrients	[%]
Crude protein (N x 6.25)	19.0
Crude fat	3.3
Crude fibre	4.9
NDF	17.2
ADF	7.1
Crude ash	6.4
Starch	35.2
Sugar	5.3
N free extracts	54.2

Minerals	[%]
Calcium	1.00
Phosphorus	0.70
Ca / P	1.43 : 1
Sodium	0.24
Magnesium	0.22
Potassium	0.92

Amino acids	[%]
Lysine	1.10
Methionine	0.38
Cystine	0.35
Met+Cys	0.73
Threonine	0.72
Tryptophan	0.25
Arginine	1.19
Histidine	0.49
Valine	0.92
Isoleucine	0.79
Leucine	1.39
Phenylalanine	0.89
Phe+Tyr	1.50
Glycine	0.89
Glutamic acid	4.22
Aspartic acid	1.84
Proline	1.31
Serine	1.01
Alanine	0.87

Vitamins	per	kg
Vitamin A	25,000	IU
Vitamin D ₃	1,500	IU
Vitamin E	135	mg
Vitamin K (as MNB)	20	mg
Thiamine (B ₁)	86	mg
Riboflavin (B ₂)	32	mg
Pyridoxine (B ₆)	31	mg
Cobalamin (B ₁₂)	150	µg
Nicotinic acid	153	mg
Pantothenic acid	59	mg
Folic acid	10	mg
Biotin	710	µg
Choline	1,370	mg

Fatty acids	[%]
C 12:0	—
C 14:0	0.01
C 16:0	0.45
C 18:0	0.09
C 20:0	0.01
C 16:1	0.01
C 18:1	0.62
C 18:2	1.76
C 18:3	0.23

Trace elements	per	kg
Iron	186	mg
Manganese	68	mg
Zinc	91	mg
Copper	15	mg
Iodine	2.1	mg
Selenium	0.3	mg

Product No.	DOX / DOX hyclate	Pellet / sterilis.	Food dye
A153D00201	200 / 230 mg/kg	10 mm / non	Blue
A153D70201	200 / 230 mg/kg	10 mm / 25 kGy	Blue
A153D00541	545 / 625 mg/kg	10 mm / non	Blue
A153D70541	545 / 625 mg/kg	10 mm / 25 kGy	Blue
A153D00624	625 / 720 mg/kg	10 mm / non	Red
A153D70623	625 / 720 mg/kg	10 mm / 25 kGy	Green

Production and Sale

ssniff Spezialdiäten GmbH
 Phone: +49-(0)2921-9658-0
 Fax: +49-(0)2921-9658-40
 E-Mail: mail@ssniff.de
www.ssniff.de / www.ssniff.com

Mouse Breeding with **tamoxifen**

Low Phytoestrogen content/soybean free

ssniff

Complete feed for mice with TAM as tamoxifen citrate (TC)



Description

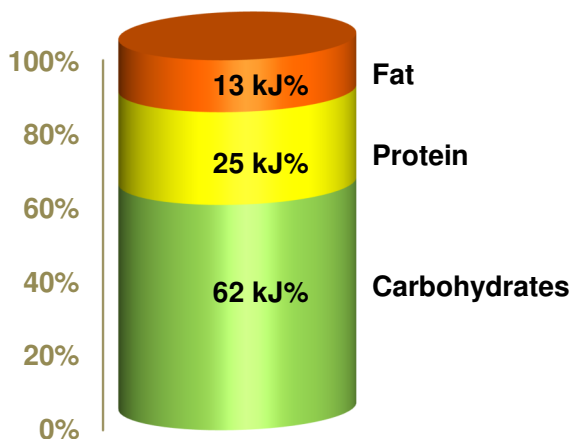
These tamoxifen (TAM) supplemented diets are based on a chow with low phytoestrogen contents (traces only). TAM is added as TAM citrate (TC) at concentrations of 360, 400 or 500 mg TC/kg; other concentrations and food dye addition are possible upon request.

The diets are supplemented with sucrose & food flavour since tamoxifen reduces the feed intake. The diet is intended for ad libitum feeding. The animals should have free access to fresh water.

Gross Energy (GE) **17.0 MJ/kg**
Metabolizable Energy (ME) ¹⁾ **14.3 MJ/kg**

¹⁾ = Physiological fuel value (Atwater); correspond to 3,415 kcal/kg

ME - pig = 13.6 MJ/kg (old: 13.6 MJ/kg)



Crude Nutrients	[%]
Crude protein (N x 6.25)	20.9
Crude fat	5.0
Crude fibre	4.3
NDF	17.2
ADF	5.9
Crude ash	5.6
Starch	29.9
Sugar	8.7
N free extracts	53.3

Minerals	[%]
Calcium	0.95
Phosphorus	0.65
Ca / P	1.46 : 1
Sodium	0.21
Magnesium	0.23
Potassium	0.68

Amino acids	[%]
Lysine	1.23
Methionine	0.48
Cystine	0.39
Met+Cys	0.87
Threonine	0.88
Tryptophan	0.24
Arginine	1.06
Histidine	0.49
Valine	1.13
Isoleucine	0.92
Leucine	1.92
Phenylalanine	1.10
Phe+Tyr	1.98
Glycine	0.97
Glutamic acid	3.85
Aspartic acid	1.88
Proline	1.52
Serine	1.07
Alanine	1.22

Vitamins	per	kg
Vitamin A	23,000	IU
Vitamin D ₃	1,400	IU
Vitamin E	125	mg
Vitamin K (as MNB)	18	mg
Thiamine (B ₁)	81	mg
Riboflavin (B ₂)	30	mg
Pyridoxine (B ₆)	29	mg
Cobalamin (B ₁₂)	140	µg
Nicotinic acid	150	mg
Pantothenic acid	54	mg
Folic acid	8	mg
Biotin	660	µg
Choline	1,200	mg

Fatty acids	[%]
C 12:0	—
C 14:0	0.01
C 16:0	0.62
C 18:0	0.15
C 20:0	0.02
C 16:1	0.03
C 18:1	1.06
C 18:2	2.67
C 18:3	0.31

Trace elements	per	kg
Iron	184	mg
Manganese	64	mg
Zinc	90	mg
Copper	14	mg
Iodine	2.0	mg
Selenium	0.4	mg

Product No.	TAM citrate / TAM	Pellet / sterilis.	Food dye
A115T70212	210 / 140 mg/kg	10 mm / 25 kGy	Yellow
A115T70360	360 / 240 mg/kg	10 mm / 25 kGy	—
A115T00400	400 / 265 mg/kg	10 mm / non	—
A115T00404	400 / 265 mg/kg	10 mm / non	RED
A115T70400	400 / 265 mg/kg	10 mm / 25 kGy	—
A115T70404	400 / 265 mg/kg	10 mm / 25 kGy	RED
A115T70500	500 / 330 mg/kg	10 mm / 25 kGy	—
A115T71000	1000 / 660 mg/kg	10 mm / 25 kGy	—

Production and Sale

ssniff Spezialdiäten GmbH
 Phone: +49-(0)2921-9658-0
 Fax: +49-(0)2921-9658-40
 E-Mail: mail@ssniff.de
www.ssniff.de / www.ssniff.com

Rat/Mouse diet with **tamoxifen**

Low Phytoestrogen content/soybean free

ssniff

Complete feed (fortified) mice with TAM as tamoxifen citrate (TC)

Description

These tamoxifen (TAM) supplemented diets are based on a chow with low phytoestrogen contents (traces only). TAM is added as TAM citrate (TC) at concentrations of 360, 400 or 500 mg TC/kg; other concentrations and dye additions are possible upon request.

The diets are supplemented with sucrose & food flavour since tamoxifen reduces the feed intake. The diet is intended for ad libitum feeding. The animals should have free access to fresh water.



Gross Energy (GE)

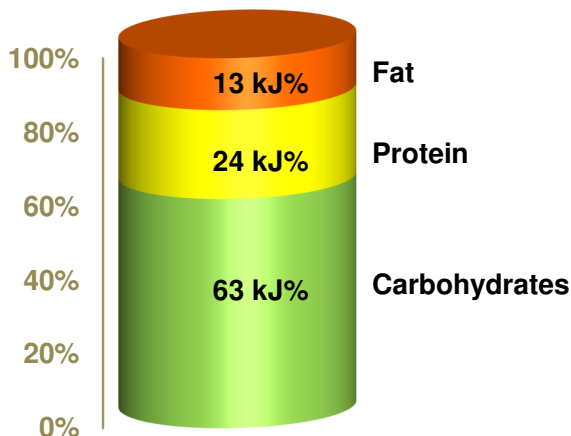
17.0 MJ/kg

Metabolizable Energy (ME)¹⁾

14.3 MJ/kg

¹⁾ = Physiological fuel value (Atwater); correspond to 3,415 kcal/kg

ME - pig = 13.5 MJ/kg (old: 13.5 MJ/kg)



Crude Nutrients	[%]
Crude protein (N x 6.25)	20.5
Crude fat	4.9
Crude fibre	4.4
NDF	16.9
ADF	5.8
Crude ash	5.5
Starch	29.4
Sugar	9.8
N free extracts	53.8

Minerals	[%]
Calcium	0.94
Phosphorus	0.65
Ca / P	1.45 : 1
Sodium	0.21
Magnesium	0.22
Potassium	0.69

Amino acids	[%]
Lysine	1.21
Methionine	0.48
Cystine	0.38
Met+Cys	0.86
Threonine	0.86
Tryptophan	0.24
Arginine	1.05
Histidine	0.49
Valine	1.11
Isoleucine	0.91
Leucine	1.89
Phenylalanine	1.08
Phe+Tyr	1.95
Glycine	0.95
Glutamic acid	3.78
Aspartic acid	1.85
Proline	1.50
Serine	1.06
Alanine	1.20

Vitamins	per kg
Vitamin A	22,500 IU
Vitamin D ₃	1,350 IU
Vitamin E	125 mg
Vitamin K (as MNB)	18 mg
Thiamine (B ₁)	80 mg
Riboflavin (B ₂)	29 mg
Pyridoxine (B ₆)	28 mg
Cobalamin (B ₁₂)	136 µg
Nicotinic acid	145 mg
Pantothenic acid	52 mg
Folic acid	8 mg
Biotin	650 µg
Choline	1,1500 mg

Fatty acids	[%]
C 12:0	—
C 14:0	0.01
C 16:0	0.61
C 18:0	0.14
C 20:0	0.02
C 16:1	0.02
C 18:1	1.04
C 18:2	2.61
C 18:3	0.30

Trace elements	per kg
Iron	180 mg
Manganese	63 mg
Zinc	88 mg
Copper	14 mg
Iodine	1.9 mg
Selenium	0.4 mg

Product No.	TAM citrate / TAM	Pellet / sterilis.	Food dye
A155T70212	210 / 140 mg/kg	10 mm / 25 kGy	Yellow
A155T70360	360 / 240 mg/kg	10 mm / 25 kGy	—
A155T00400	400 / 265 mg/kg	10 mm / non	—
A155T00404	400 / 265 mg/kg	10 mm / non	RED
A155T70400	400 / 265 mg/kg	10 mm / 25 kGy	—
A155T70401	400 / 265 mg/kg	10 mm / 25 kGy	BLUE
A155T70500	500 / 330 mg/kg	10 mm / 25 kGy	—

Production and Sale

ssniff Spezialdiäten GmbH
 Phone: +49-(0)2921-9658-0
 Fax: +49-(0)2921-9658-40
 E-Mail mail@ssniff.de
www.ssniff.de / www.ssniff.com