

DIO – 60 kJ% fat (Lard)

ssniff

HF diet for rodents with lard (& soybean oil) | corresponds to D12492



Description

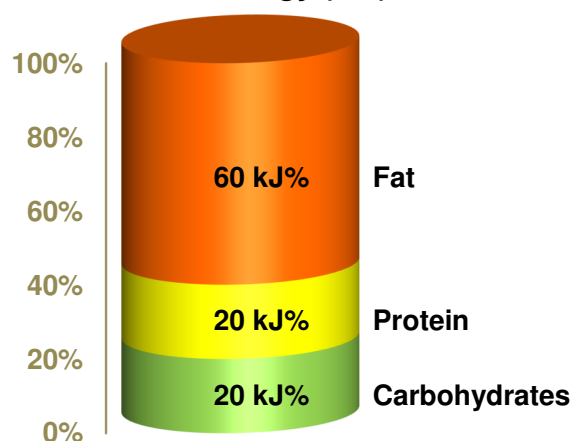
This purified diet of the DIO series is characterized by very high fat contents (lard). It is therefore used to induce obesity and metabolic syndrome / diabetes (NIDDM) in mice. The diet is also available with beef tallow as fat source (more saturated FA).

The diet is intended for ad libitum feeding. The animals should have free access to fresh water.

Gross Energy (GE) 25.0 MJ/kg

Metabolizable Energy (ME) ¹⁾ 21.6 MJ/kg

¹⁾ = Physiological fuel value (Atwater); correspond to 5,150 kcal/kg



Crude Nutrients	[%]
Crude protein (N x 6.25)	24.4
Crude fat	34.6
Crude fibre	6.0
Crude ash	5.3
Starch	0.1
Sugar	9.4
N free extracts	26.3

Minerals	[%]	Amino acids	[%]	Vitamins	per kg
Calcium	0.92	Lysine	2.02	Vitamin A	15,000 IU
Phosphorus	0.64	Methionine	0.86	Vitamin D ₃	1,500 IU
Ca / P	1.44	Cystine	0.45	Vitamin E	150 mg
Sodium	0.20	Met+Cys	1.31	Vitamin K (as MNB)	20 mg
Magnesium	0.23	Threonine	1.07	Thiamine (B ₁)	25 mg
Potassium	0.97	Tryptophan	0.33	Riboflavin (B ₂)	16 mg
		Arginine	0.95	Pyridoxine (B ₆)	16 mg
		Histidine	0.74	Cobalamin (B ₁₂)	30 µg
		Valine	1.70	Nicotinic acid	47 mg
		Isoleucine	1.38	Pantothenic acid	55 mg
		Leucine	2.42	Folic acid	16 mg
		Phenylalanine	1.27	Biotin	300 µg
		Phe+Tyr	2.56	Choline	1,140 mg
		Glycine	0.52		
		Glutamic acid	5.50	Trace elements	per kg
		Aspartic acid	1.82	Iron	168 mg
		Proline	2.80	Manganese	95 mg
		Serine	1.46	Zinc	65 mg
		Alanine	0.81	Copper	13 mg
				Iodine	1.2 mg
				Selenium	0.2 mg

Main products

E15742-30 Meal / powder
 E15742-34 10 mm pellets
 E15742-347 10 mm pellets, γ -irradiated 25 kGy

Extra cholesterol addition on request (customized)

Production and Sale

ssniff Spezialdiäten GmbH
 Phone: +49-(0)2921-9658-0
 Fax: +49-(0)2921-9658-40
 E-Mail mail@ssniff.de
www.ssniff.de / www.ssniff.com

DIO – 45 kJ% fat (Lard)

ssniff

HF diet for rodents with lard (& soybean oil) | corresponds to D12451



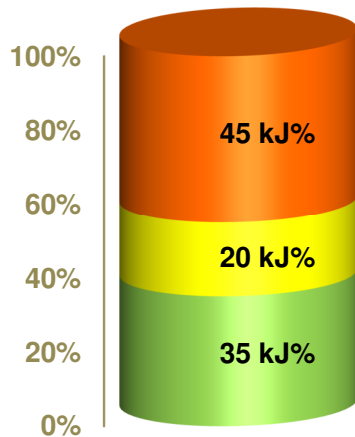
Description

This purified diet of the DIO series is characterized by high fat contents (lard) and high sucrose levels. It is therefore used to induce obesity and metabolic syndrome / diabetes (NIDDM) in rats and mice. The diet is also available with beef tallow as fat source (more saturated FA).

The diet is intended for ad libitum feeding. The animals should have free access to fresh water.

Gross Energy (GE) 22.5 MJ/kg
Metabolizable Energy (ME) ¹⁾ 19.3 MJ/kg

¹⁾ = Physiological fuel value (Atwater); correspond to 4,615 kcal/kg



Crude Nutrients	[%]
Crude protein (N x 6.25)	22.0
Crude fat	23.6
Crude fibre	5.7
Crude ash	5.3
Starch	6.8
Sugar	21.1
N free extracts	40.0

Minerals	[%]	Amino acids	[%]	Vitamins	per kg
Calcium	0.92	Lysine	1.83	Vitamin A	15,000 IU
Phosphorus	0.64	Methionine	0.78	Vitamin D ₃	1,500 IU
Ca / P	1.44: 1	Cystine	0.39	Vitamin E	150 mg
Sodium	0.20	Met+Cys	1.18	Vitamin K (as MNB)	20 mg
Magnesium	0.23	Threonine	0.97	Thiamine (B ₁)	25 mg
Potassium	0.97	Tryptophan	0.29	Riboflavin (B ₂)	16 mg
		Arginine	0.86	Pyridoxine (B ₆)	16 mg
		Histidine	0.67	Cobalamin (B ₁₂)	30 µg
		Valine	1.54	Nicotinic acid	47 mg
		Isoleucine	1.25	Pantothenic acid	55 mg
		Leucine	2.19	Folic acid	16 mg
		Phenylalanine	1.14	Biotin	300 µg
		Phe+Tyr	2.31	Choline	920 mg
		Glycine	0.47		
		Glutamic acid	4.97	Trace elements	per kg
		Aspartic acid	1.64	Iron	168 mg
		Proline	2.53	Manganese	95 mg
		Serine	1.32	Zinc	65 mg
		Alanine	0.66	Copper	13 mg
				Iodine	1.2 mg
				Selenium	0.2 mg

Main products

E15744-30 Meal / powder
 E15744-344 10 mm pellets, red
 E15744-347 10 mm pellets, red, γ -irradiated 25 kGy

Extra cholesterol addition on request (customized)

Production and Sale

ssniff Spezialdiäten GmbH
 Phone: +49-(0)2921-9658-0
 Fax: +49-(0)2921-9658-40
 E-Mail mail@ssniff.de
www.ssniff.de / www.ssniff.com

DIO – 10 kJ% fat, 33 % sucrose

ssniff

LF Control diet for rodents with lard (& soybean oil) | corresponds to D12450B

Description

This purified diet of the DIO series is one of three control diets with low fat and energy contents. The sucrose content, however, is high which may result in increased feed / energy intakes particularly in rats.

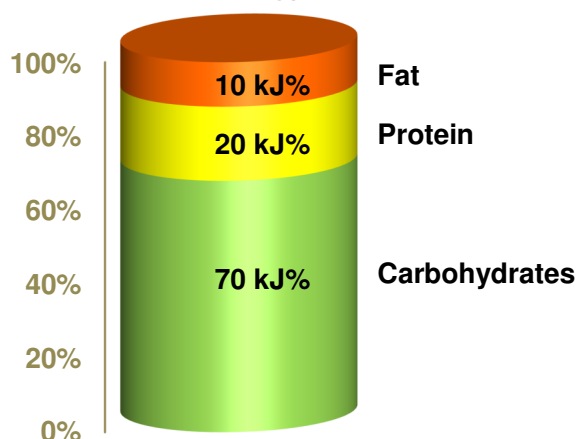
The diet is intended for ad libitum feeding. The animals should have free access to fresh water.



Gross Energy (GE) 18.0 MJ/kg

Metabolizable Energy (ME) ¹⁾ 15.3 MJ/kg

¹⁾ = Physiological fuel value (Atwater); correspond to 3,657 kcal/kg



Crude Nutrients	[%]
Crude protein (N x 6.25)	18.2
Crude fat	4.1
Crude fibre	4.8
Crude ash	5.3
Starch	25.0
Sugar	32.8
N free extracts	63.9

Minerals	[%]	Amino acids	[%]	Vitamins	per kg
Calcium	0.92	Lysine	1.52	Vitamin A	15,000 IU
Phosphorus	0.63	Methionine	0.66	Vitamin D ₃	1,500 IU
Ca / P	1.46: 1	Cystine	0.33	Vitamin E	150 mg
Sodium	0.20	Met+Cys	0.99	Vitamin K (as MNB)	20 mg
Magnesium	0.23	Threonine	0.80	Thiamine (B ₁)	25 mg
Potassium	0.97	Tryptophan	0.24	Riboflavin (B ₂)	16 mg
		Arginine	0.71	Pyridoxine (B ₆)	16 mg
		Histidine	0.55	Cobalamin (B ₁₂)	30 µg
		Valine	1.27	Nicotinic acid	47 mg
		Isoleucine	1.02	Pantothenic acid	55 mg
		Leucine	1.80	Folic acid	16 mg
		Phenylalanine	0.95	Biotin	300 µg
		Phe+Tyr	1.90	Choline	920 mg
		Glycine	0.39		
		Glutamic acid	4.10	Trace elements	per kg
		Aspartic acid	1.35	Iron	168 mg
		Proline	2.09	Manganese	95 mg
		Serine	1.09	Zinc	65 mg
		Alanine	0.55	Copper	13 mg
				Iodine	1.2 mg
				Selenium	0.2 mg

Main products

E15745-00	Meal / powder
E15745-04	10 mm pellets
E15745-047	10 mm pellets, γ-irradiated 25 kGy

Production and Sale

ssniff Spezialdiäten GmbH
 Phone: +49-(0)2921-9658-0
 Fax: +49-(0)2921-9658-40
 E-Mail mail@ssniff.de
www.ssniff.de / www.ssniff.com

DIO – 10 kJ% fat, 16 % sucrose

ssniff

LF Control diet for rodents with lard (& soybean oil) | corresponds to D12450H

Description

This purified diet of the DIO series is one of three control diets with low fat and energy contents. The sucrose content of this diet has been reduced 16 %.

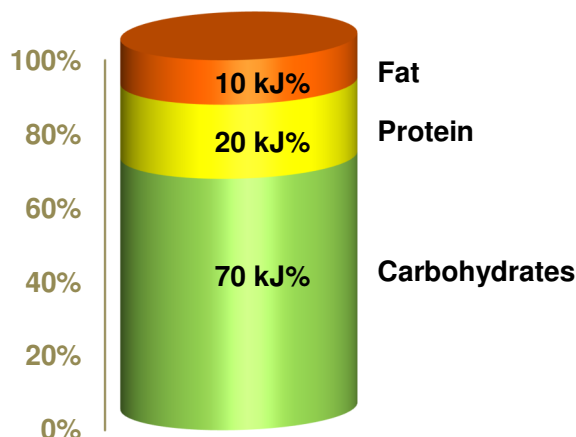
The diet is intended for ad libitum feeding. The animals should have free access to fresh water.



Gross Energy (GE) 17.9 MJ/kg

Metabolizable Energy (ME) ¹⁾ 15.2 MJ/kg

¹⁾ = Physiological fuel value (Atwater); correspond to 3,630 kcal/kg



Crude Nutrients	[%]
Crude protein (N x 6.25)	18.2
Crude fat	4.1
Crude fibre	5.0
Crude ash	5.3
Starch	39.2
Sugar	16.0
N free extracts	63.2

Minerals	[%]	Amino acids	[%]	Vitamins	per kg
Calcium	0.92	Lysine	1.52	Vitamin A	15,000 IU
Phosphorus	0.63	Methionine	0.66	Vitamin D ₃	1,500 IU
Ca / P	1.46 : 1	Cystine	0.33	Vitamin E	150 mg
Sodium	0.20	Met+Cys	0.99	Vitamin K (as MNB)	20 mg
Magnesium	0.23	Threonine	0.80	Thiamine (B ₁)	25 mg
Potassium	0.97	Tryptophan	0.24	Riboflavin (B ₂)	16 mg
		Arginine	0.71	Pyridoxine (B ₆)	16 mg
		Histidine	0.55	Cobalamin (B ₁₂)	30 µg
		Valine	1.27	Nicotinic acid	47 mg
		Isoleucine	1.02	Pantothenic acid	55 mg
		Leucine	1.80	Folic acid	16 mg
		Phenylalanine	0.95	Biotin	300 µg
		Phe+Tyr	1.90	Choline	920 mg
		Glycine	0.39		
		Glutamic acid	4.10	Trace elements	per kg
		Aspartic acid	1.35	Iron	168 mg
		Proline	2.09	Manganese	95 mg
		Serine	1.09	Zinc	65 mg
		Alanine	0.55	Copper	13 mg
				Iodine	1.2 mg
				Selenium	0.2 mg

Main products

E157451-00	Meal / powder
E157451-04	10 mm pellets
E157451-047	10 mm pellets, γ-irradiated 25 kGy

Production and Sale

ssniff Spezialdiäten GmbH
 Phone: +49-(0)2921-9658-0
 Fax: +49-(0)2921-9658-40
 E-Mail mail@ssniff.de
www.ssniff.de / www.ssniff.com

DIO – 10 kJ% fat, ~7 % sucrose

ssniff

LF Control diet for rodents with lard (& soybean oil) | corresponds to D12450J

Description

This purified diet of the DIO series is one of three control diets with low fat and energy contents. The sucrose content of this diet has been further reduced 6.8 %.

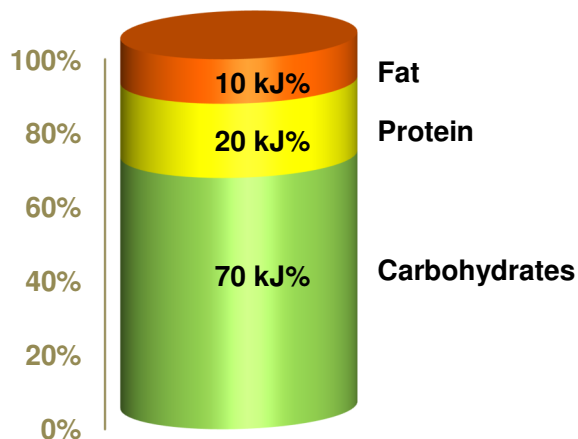
The diet is intended for ad libitum feeding. The animals should have free access to fresh water.



Gross Energy (GE) 17.9 MJ/kg

Metabolizable Energy (ME) ¹⁾ 15.2 MJ/kg

¹⁾ = Physiological fuel value (Atwater); correspond to 3,630 kcal/kg



Crude Nutrients	[%]
Crude protein (N x 6.25)	18.2
Crude fat	4.1
Crude fibre	5.0
Crude ash	5.3
Starch	43.5
Sugar	6.8
N free extracts	63.0

Minerals	[%]	Amino acids	[%]	Vitamins	per kg
Calcium	0.92	Lysine	1.52	Vitamin A	15,000 IU
Phosphorus	0.63	Methionine	0.66	Vitamin D ₃	1,500 IU
Ca / P	1.46: 1	Cystine	0.33	Vitamin E	150 mg
Sodium	0.20	Met+Cys	0.99	Vitamin K (as MNB)	20 mg
Magnesium	0.23	Threonine	0.80	Thiamine (B ₁)	25 mg
Potassium	0.97	Tryptophan	0.24	Riboflavin (B ₂)	16 mg
		Arginine	0.71	Pyridoxine (B ₆)	16 mg
		Histidine	0.55	Cobalamin (B ₁₂)	30 µg
Fatty acids	[%]	Valine	1.27	Nicotinic acid	47 mg
C 12:0	0.01	Isoleucine	1.02	Pantothenic acid	55 mg
C 14:0	0.04	Leucine	1.80	Folic acid	16 mg
C 16:0	0.69	Phenylalanine	0.95	Biotin	300 µg
C 18:0	0.31	Phe+Tyr	1.90	Choline	920 mg
C 20:0	0.02	Glycine	0.39		
C 16:1	0.05	Glutamic acid	4.10	Trace elements	per kg
C 18:1	1.30	Aspartic acid	1.35	Iron	168 mg
C 18:2	1.43	Proline	2.09	Manganese	95 mg
C 18:3	0.15	Serine	1.09	Zinc	65 mg
		Alanine	0.55	Copper	13 mg
				Iodine	1.2 mg
				Selenium	0.2 mg

Main products

E157453-00	Meal / powder
E157453-04	10 mm pellets
E157453-047	10 mm pellets, γ-irradiated 25 kGy

Production and Sale

ssniff Spezialdiäten GmbH
 Phone: +49-(0)2921-9658-0
 Fax: +49-(0)2921-9658-40
 E-Mail mail@ssniff.de
www.ssniff.de / www.ssniff.com

DIO – 10 kJ% fat, no sucrose addition

ssniff

LF Control diet for rodents with lard (& soybean oil) | corresponds to D12450K



Description

This purified diet of the DIO series is one of three control diets with low fat and energy contents. The sucrose content of this diet has been further reduced 1 % in total.

The diet is intended for ad libitum feeding. The animals should have free access to fresh water.

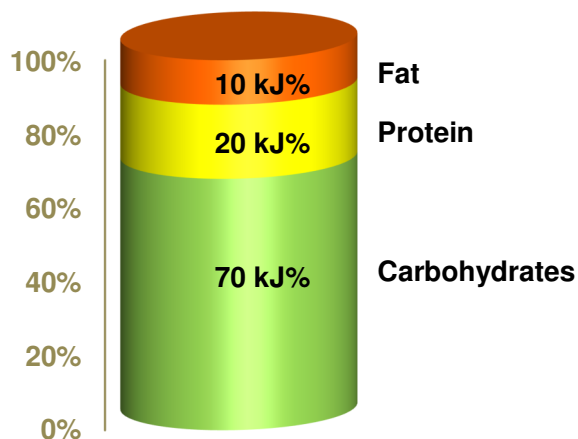
Gross Energy (GE)

17.9 MJ/kg

Metabolizable Energy (ME) ¹⁾

15.1 MJ/kg

¹⁾ = Physiological fuel value (Atwater); correspond to 3,630 kcal/kg



Crude Nutrients

Crude Nutrients	[%]
Crude protein (N x 6.25)	18.2
Crude fat	4.1
Crude fibre	5.0
Crude ash	5.3
Starch	47.0
Sugar	1.0
N free extracts	62.9

Minerals

Minerals	[%]
Calcium	0.92
Phosphorus	0.63
Ca / P	1.46: 1
Sodium	0.20
Magnesium	0.23
Potassium	0.97

Amino acids

Amino acids	[%]
Lysine	1.52
Methionine	0.66
Cystine	0.33
Met+Cys	0.99
Threonine	0.80
Tryptophan	0.24
Arginine	0.71
Histidine	0.55
Valine	1.27
Isoleucine	1.02
Leucine	1.80
Phenylalanine	0.95
Phe+Tyr	1.90
Glycine	0.39
Glutamic acid	4.10
Aspartic acid	1.35
Proline	2.09
Serine	1.09
Alanine	0.55

Vitamins

Vitamins	per kg
Vitamin A	15,000 IU
Vitamin D ₃	1,500 IU
Vitamin E	150 mg
Vitamin K (as MNB)	20 mg
Thiamine (B ₁)	25 mg
Riboflavin (B ₂)	16 mg
Pyridoxine (B ₆)	16 mg
Cobalamin (B ₁₂)	30 µg
Nicotinic acid	47 mg
Pantothenic acid	55 mg
Folic acid	16 mg
Biotin	300 µg
Choline	920 mg

Fatty acids

Fatty acids	[%]
C 12:0	0.01
C 14:0	0.04
C 16:0	0.69
C 18:0	0.31
C 20:0	0.02
C 16:1	0.05
C 18:1	1.30
C 18:2	1.43
C 18:3	0.15

Trace elements

Trace elements	per kg
Iron	168 mg
Manganese	95 mg
Zinc	65 mg
Copper	13 mg
Iodine	1.2 mg
Selenium	0.2 mg

Main products

E157452-00	Meal / powder
E157452-04	10 mm pellets
E157452-047	10 mm pellets, γ-irradiated 25 kGy

Production and Sale

ssniff Spezialdiäten GmbH
 Phone: +49-(0)2921-9658-0
 Fax: +49-(0)2921-9658-40
 E-Mail mail@ssniff.de
www.ssniff.de / www.ssniff.com

DIO LS – 13 kJ% fat, 11 % sucrose

ssniff

LF Control diet for rodents with 5 % soybean oil | low sugar / high fiber



Description

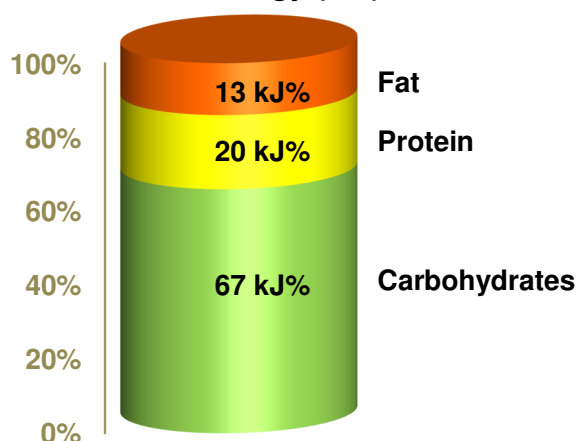
This purified control diet of the DIO series contains soybean oil as the sole fat source to limit the content of saturated fatty acid and increase the essential fatty acids. The diet is further characterized by low sucrose and high dietary fibre contents.

The diet is intended for ad libitum feeding. The animals should have free access to fresh water.

Gross Energy (GE) 18.1 MJ/kg

Metabolizable Energy (ME) ¹⁾ 15.1 MJ/kg

¹⁾ = Physiological fuel value (Atwater); correspond to 3,595 kcal/kg



Crude Nutrients	[%]
Crude protein (N x 6.25)	18.2
Crude fat	5.1
Crude fibre	7.0
Crude ash	5.3
Starch	37.3
Sugar	11.0
N free extracts	60.1

Minerals	[%]	Amino acids	[%]	Vitamins	per kg
Calcium	0.92	Lysine	1.52	Vitamin A	15,000 IU
Phosphorus	0.63	Methionine	0.66	Vitamin D ₃	1,500 IU
Ca / P	1.46: 1	Cystine	0.33	Vitamin E	150 mg
Sodium	0.20	Met+Cys	0.99	Vitamin K (as MNB)	20 mg
Magnesium	0.23	Threonine	0.80	Thiamine (B ₁)	25 mg
Potassium	0.97	Tryptophan	0.24	Riboflavin (B ₂)	16 mg
		Arginine	0.71	Pyridoxine (B ₆)	16 mg
Fatty acids	[%]	Histidine	0.55	Cobalamin (B ₁₂)	30 µg
C 12:0	—	Valine	1.27	Nicotinic acid	47 mg
C 14:0	0.02	Isoleucine	1.02	Pantothenic acid	55 mg
C 16:0	0.57	Leucine	1.80	Folic acid	16 mg
C 18:0	0.18	Phenylalanine	0.95	Biotin	300 µg
C 20:0	0.02	Phe+Tyr	1.90	Choline	920 mg
C 16:1	0.01	Glycine	0.39		
C 18:1	1.28	Glutamic acid	4.10	Trace elements	per kg
C 18:2	2.65	Aspartic acid	1.35	Iron	168 mg
C 18:3	0.29	Proline	2.09	Manganese	95 mg
		Serine	1.09	Zinc	65 mg
		Alanine	0.55	Copper	13 mg
				Iodine	1.2 mg
				Selenium	0.2 mg

Main products

E15748-00	Meal / powder
E15748-04	10 mm pellets
E15748-047	10 mm pellets, γ-irradiated 25 kGy

Production and Sale

ssniff Spezialdiäten GmbH
 Phone: +49-(0)2921-9658-0
 Fax: +49-(0)2921-9658-40
 E-Mail mail@ssniff.de
www.ssniff.de / www.ssniff.com

DIO – 60 kJ% fat (beef tallow)

ssniff

HF diet for rodents with tallow (& soybean oil) | corresponds to D12492 (II) mod.

Description

This purified diet of the DIO series has very high fat contents (tallow). It is therefore used to induce obesity and metabolic syndrome / diabetes (NIDDM) in mice. Beef tallow is characterized by a more saturated fatty acid composition (C16:0 & C18:0) compared to lard.

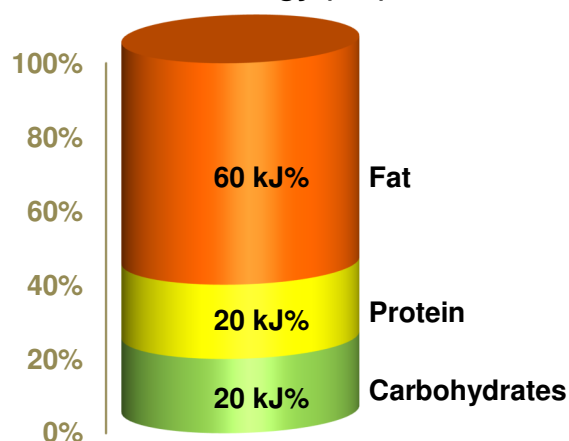
The diet is intended for ad libitum feeding. The animals should have free access to fresh water.



Gross Energy (GE) 25.0 MJ/kg

Metabolizable Energy (ME) ¹⁾ 21.6 MJ/kg

¹⁾ = Physiological fuel value (Atwater); correspond to 5,150 kcal/kg



Crude Nutrients	[%]
Crude protein (N x 6.25)	24.4
Crude fat	34.6
Crude fibre	6.0
Crude ash	5.3
Starch	0.1
Sugar	9.4
N free extracts	26.3

Minerals	[%]	Amino acids	[%]	Vitamins	per kg
Calcium	0.92	Lysine	2.02	Vitamin A	15,000 IU
Phosphorus	0.64	Methionine	0.86	Vitamin D ₃	1,500 IU
Ca / P	1.44: 1	Cystine	0.45	Vitamin E	150 mg
Sodium	0.20	Met+Cys	1.31	Vitamin K (as MNB)	20 mg
Magnesium	0.23	Threonine	1.07	Thiamine (B ₁)	25 mg
Potassium	0.97	Tryptophan	0.33	Riboflavin (B ₂)	16 mg
		Arginine	0.95	Pyridoxine (B ₆)	16 mg
		Histidine	0.74	Cobalamin (B ₁₂)	30 µg
		Valine	1.70	Nicotinic acid	47 mg
		Isoleucine	1.38	Pantothenic acid	55 mg
		Leucine	2.42	Folic acid	16 mg
		Phenylalanine	1.27	Biotin	300 µg
		Phe+Tyr	2.56	Choline	1,140 mg
		Glycine	0.52		
		Glutamic acid	5.50	Trace elements	per kg
		Aspartic acid	1.82	Iron	168 mg
		Proline	2.80	Manganese	95 mg
		Serine	1.46	Zinc	65 mg
		Alanine	0.81	Copper	13 mg
				Iodine	1.2 mg
				Selenium	0.2 mg

Main products

E15741-30 Meal / powder
 E15741-34 10 mm pellets
 E15741-347 10 mm pellets, γ -irradiated 25 kGy

Extra cholesterol addition on request (customized)

Production and Sale

ssniff Spezialdiäten GmbH
 Phone: +49-(0)2921-9658-0
 Fax: +49-(0)2921-9658-40
 E-Mail mail@ssniff.de
www.ssniff.de / www.ssniff.com

DIO – 45 kJ% fat (beef tallow)

ssniff

HF diet for rodents with tallow (& soybean oil) | corresponds to D12451 (II) mod.

Description

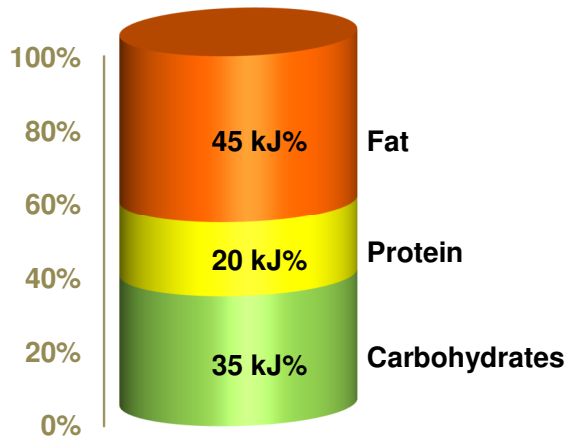
This purified DIO diet is characterized by high fat (tallow) and high sucrose contents. It is therefore used to induce obesity and metabolic syndrome / diabetes (NIDDM) in rats and mice. The fatty acids in this diet are more saturated compared to the equivalent lard diet.

The diet is intended for ad libitum feeding. The animals should have free access to fresh water.



Gross Energy (GE) 22.5 MJ/kg
Metabolizable Energy (ME) ¹⁾ 19.3 MJ/kg

¹⁾ = Physiological fuel value (Atwater); correspond to 4,615 kcal/kg



Crude Nutrients	[%]
Crude protein (N x 6.25)	22.0
Crude fat	23.6
Crude fibre	5.7
Crude ash	5.3
Starch	6.8
Sugar	21.1
N free extracts	40.0

Minerals	[%]	Amino acids	[%]	Vitamins	per kg
Calcium	0.92	Lysine	1.83	Vitamin A	15,000 IU
Phosphorus	0.64	Methionine	0.78	Vitamin D ₃	1,500 IU
Ca / P	1.44: 1	Cystine	0.39	Vitamin E	150 mg
Sodium	0.20	Met+Cys	1.18	Vitamin K (as MNB)	20 mg
Magnesium	0.23	Threonine	0.97	Thiamine (B ₁)	25 mg
Potassium	0.97	Tryptophan	0.29	Riboflavin (B ₂)	16 mg
		Arginine	0.86	Pyridoxine (B ₆)	16 mg
		Histidine	0.67	Cobalamin (B ₁₂)	30 30
		Valine	1.54	Nicotinic acid	47 mg
		Isoleucine	1.25	Pantothenic acid	55 mg
		Leucine	2.19	Folic acid	16 mg
		Phenylalanine	1.14	Biotin	300 µg
		Phe+Tyr	2.31	Choline	920 mg
		Glycine	0.47		
		Glutamic acid	4.97	Trace elements	per kg
		Aspartic acid	1.64	Iron	168 mg
		Proline	2.53	Manganese	95 mg
		Serine	1.32	Zinc	65 mg
		Alanine	0.66	Copper	13 mg
				Iodine	1.2 mg
				Selenium	0.2 mg

Main products

E15746-30 Meal / powder
 E15746-34 10 mm pellets
 E15746-347 10 mm pellets, γ-irradiated 25 kGy

Extra cholesterol addition on request (customized)

Production and Sale

ssniff Spezialdiäten GmbH
 Phone: +49-(0)2921-9658-0
 Fax: +49-(0)2921-9658-40
 E-Mail mail@ssniff.de
www.ssniff.de / www.ssniff.com