

# Paigen – 0.5 % Cholesterol

Atherosclerotic diet for rats & mice

ssniff



## Description

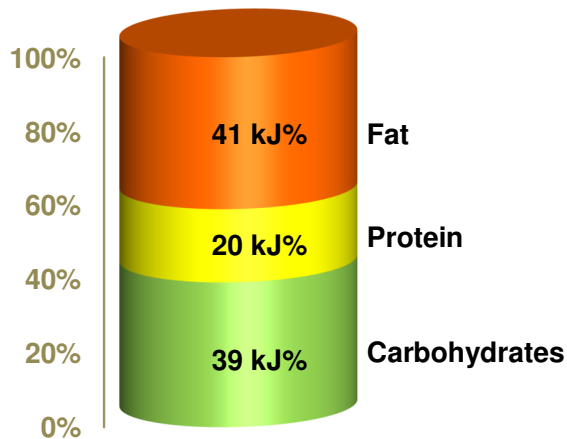
This purified HF diet contains 20 % fat mainly from cocoa butter, and 0.5 % cholesterol. It is therefore used to induce atherosclerotic lesions (plaques).

Higher cholesterol contents on request (+/- Na cholate).

*The diet is intended for ad libitum feeding. The animals should have free access to fresh water*

**Gross Energy (GE)** 21.7 MJ/kg  
**Metabolizable Energy (ME) <sup>1)</sup>** 18.7 MJ/kg

<sup>1)</sup> = Physiological fuel value (Atwater); correspond to 4,465 kcal/kg



Crude Nutrients	[%]
Crude protein (N x 6.25)	22.1
Crude fat	20.4
Crude fibre	5.2
Crude ash	5.0
Starch	20.5
Sugar	13.6
N free extracts	43.7

Minerals	[%]	Amino acids	[%]	Vitamins	per kg
Calcium	0.85	Lysine	1.83	Vitamin A	15,000 IU
Phosphorus	0.61	Methionine	0.78	Vitamin D <sub>3</sub>	1,500 IU
Ca / P	1.39 : 1	Cystine	0.44	Vitamin E	150 mg
Sodium	0.18	Met+Cys	1.22	Vitamin K (as MNB)	20 mg
Magnesium	0.21	Threonine	0.97	Thiamine (B <sub>1</sub> )	26 mg
Potassium	0.89	Tryptophan	0.29	Riboflavin (B <sub>2</sub> )	16 mg
		Arginine	0.86	Pyridoxine (B <sub>6</sub> )	16 mg
<b>Fatty acids</b>	<b>[%]</b>	Histidine	0.66	Cobalamin (B <sub>12</sub> )	30 µg
C 12:0	0.01	Valine	1.54	Nicotinic acid	49 mg
C 14:0	0.03	Isoleucine	1.24	Pantothenic acid	56 mg
C 16:0	4.69	Leucine	2.19	Folic acid	16 mg
C 18:0	6.10	Phenylalanine	1.14	Biotin	300 µg
C 20:0	0.19	Phe+Tyr	2.31	Choline	1,020 mg
C 16:1	0.07	Glycine	0.44		
C 18:1	6.30	Glutamic acid	4.97	<b>Trace elements</b>	<b>per kg</b>
C 18:2	1.82	Aspartic acid	1.64	Iron	156 mg
C 18:3	0.22	Proline	2.53	Manganese	90 mg
		Serine	1.32	Zinc	63 mg
	mg/kg	Alanine	0.66	Copper	13 mg
Cholesterol	5,000			Iodine	1.0 mg
				Selenium	0.2 mg

## Main products

E15108-3404 10 mm pellets

E15108-3474 10 mm pellets, γ-irradiated 25 kGy

## Production and Sale

ssniff Spezialdiäten GmbH

Phone: +49-(0)2921-9658-0

Fax: +49-(0)2921-9658-40

E-Mail [mail@ssniff.de](mailto:mail@ssniff.de)

[www.ssniff.de](http://www.ssniff.de) / [www.ssniff.com](http://www.ssniff.com)

# Paigen chow – 1.25 % Cholesterol

ssniff

Atherosclerotic diet for rats & mice



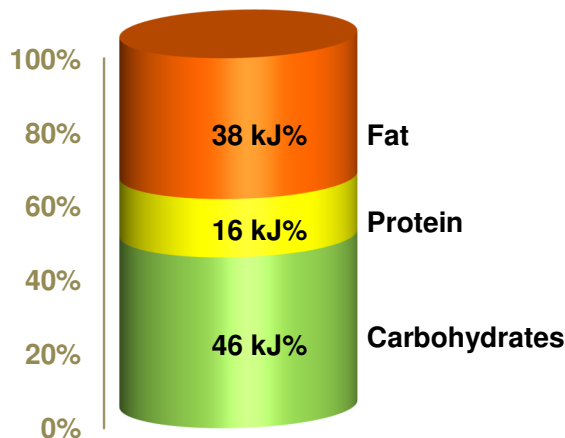
## Description

This chow based high fat diet has been supplemented with 15 % cocoa butter and 1.25 % cholesterol. It is therefore used to induce atherosclerotic lesions (plaques). There exists another modification of that diet based on purified ingredients (+/- Na cholate).

*The diet is intended for ad libitum feeding. The animals should have free access to fresh water*

**Gross Energy (GE)** 19.7 MJ/kg  
**Metabolizable Energy (ME) <sup>1)</sup>** 17.2 MJ/kg

<sup>1)</sup> = Physiological fuel value (Atwater); correspond to 4,100 kcal/kg



Crude Nutrients	[%]
Crude protein (N x 6.25)	16.5
Crude fat	17.5
Crude fibre	4.4
Crude ash	4.9
Starch	26.3
Sugar	6.8
N free extracts	46.8

Minerals	[%]	Amino acids	[%]	Vitamins	per kg
Calcium	0.88	Lysine	1.02	Vitamin A	18,500 IU
Phosphorus	0.62	Methionine	0.36	Vitamin D <sub>3</sub>	1,100 IU
Ca / P	1.41 : 1	Cystine	0.32	Vitamin E	100 mg
Sodium	0.20	Met+Cys	0.68	Vitamin K (as MNB)	20 mg
Magnesium	0.18	Threonine	0.63	Thiamine (B <sub>1</sub> )	62 mg
Potassium	0.78	Tryptophan	0.22	Riboflavin (B <sub>2</sub> )	23 mg
		Arginine	0.95	Pyridoxine (B <sub>6</sub> )	22 mg
<b>Fatty acids</b>	<b>[%]</b>	Histidine	0.43	Cobalamin (B <sub>12</sub> )	100 µg
C 12:0	—	Valine	0.85	Nicotinic acid	105 mg
C 14:0	0.02	Isoleucine	0.73	Pantothenic acid	44 mg
C 16:0	4.07	Leucine	1.26	Folic acid	7 mg
C 18:0	5.22	Phenylalanine	0.79	Biotin	500 µg
C 20:0	0.16	Phe+Tyr	1.37	Choline	1,600 mg
C 16:1	0.06	Glycine	0.69		
C 18:1	5.23	Glutamic acid	3.62	<b>Trace elements</b>	<b>per kg</b>
C 18:2	1.56	Aspartic acid	1.48	Iron	149 mg
C 18:3	0.21	Proline	1.26	Manganese	63 mg
	mg/kg	Serine	0.87	Zinc	75 mg
Cholesterol	12,500	Alanine	0.71	Copper	13 mg
				Iodine	1.6 mg
				Selenium	0.3 mg

## Main products

E15106-3400 10 mm  
 E15106-3470 10 mm, γ-irradiated 25 kGy

## Production and Sale

ssniff Spezialdiäten GmbH  
 Phone: +49-(0)2921-9658-0  
 Fax: +49-(0)2921-9658-40  
 E-Mail [mail@ssniff.de](mailto:mail@ssniff.de)  
[www.ssniff.de](http://www.ssniff.de) / [www.ssniff.com](http://www.ssniff.com)

# Paigen chow – 15 % fat

ssniff

Atherosclerotic diet for rodents | 1.25 % Cholesterol, 0.5 % Na Cholate



## Description

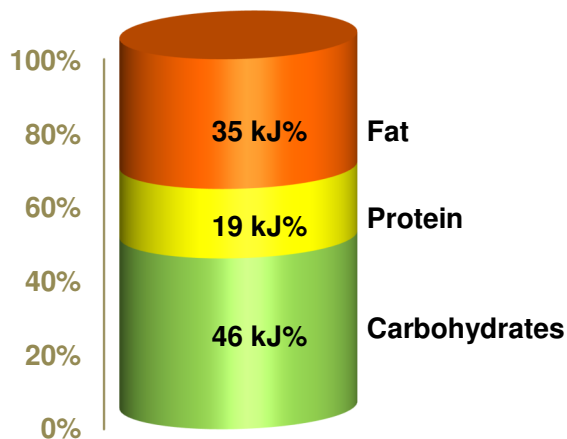
This chow based high fat diet (cocoa butter & pork lard) has been supplemented cholesterol and Na cholate. It is therefore used to induce atherosclerotic lesions (plaques).

*The diet is intended for ad libitum feeding. The animals should have free access to fresh water*

**Gross Energy (GE)** 19.6 MJ/kg

**Metabolizable Energy (ME) <sup>1)</sup>** 16.9 MJ/kg

<sup>1)</sup> = Physiological fuel value (Atwater); correspond to 4,040 kcal/kg



Crude Nutrients	[%]
Crude protein (N x 6.25)	19.1
Crude fat	15.7
Crude fibre	4.2
Crude ash	5.2
Starch	24.6
Sugar	8.1
N free extracts	46.4

Minerals	[%]
Calcium	0.83
Phosphorus	0.58
Ca / P	1.44 : 1
Sodium	0.21
Magnesium	0.17
Potassium	0.74

Amino acids	[%]
Lysine	1.29
Methionine	0.48
Cystine	0.27
Met+Cys	0.75
Threonine	0.77
Tryptophan	0.25
Arginine	1.04
Histidine	0.53
Valine	1.08
Isoleucine	0.92
Leucine	1.59
Phenylalanine	0.95
Phe+Tyr	1.72
Glycine	0.72
Glutamic acid	4.31
Aspartic acid	1.69
Proline	1.65
Serine	1.06
Alanine	0.78

Vitamins	per kg
Vitamin A	20,200 IU
Vitamin D <sub>3</sub>	1,300 IU
Vitamin E	120 mg
Vitamin K (as MNB)	20 mg
Thiamine (B <sub>1</sub> )	65 mg
Riboflavin (B <sub>2</sub> )	25 mg
Pyridoxine (B <sub>6</sub> )	24 mg
Cobalamin (B <sub>12</sub> )	100 µg
Nicotinic acid	110 mg
Pantothenic acid	52 mg
Folic acid	9 mg
Biotin	550 µg
Choline	1,400 mg

Fatty acids	[%]
C 12:0	0.01
C 14:0	0.10
C 16:0	3.62
C 18:0	3.45
C 20:0	0.10
C 16:1	0.21
C 18:1	5.32
C 18:2	1.89
C 18:3	0.23
	mg/kg
Cholesterol	12,500

Trace elements	per kg
Iron	140 mg
Manganese	59 mg
Zinc	73 mg
Copper	11 mg
Iodine	1.4 mg
Selenium	0.3 mg

## Main products

E15104-3404 10 mm

E15104-3474 10 mm, γ-irradiated 25 kGy

## Production and Sale

ssniff Spezialdiäten GmbH

Phone: +49-(0)2921-9658-0

Fax: +49-(0)2921-9658-40

E-Mail: mail@ssniff.de

[www.ssniff.de](http://www.ssniff.de) / [www.ssniff.com](http://www.ssniff.com)



# HF Coconut oil series

High fat diet for rodents | 24 % casein, 10 % coconut oil

ssniff



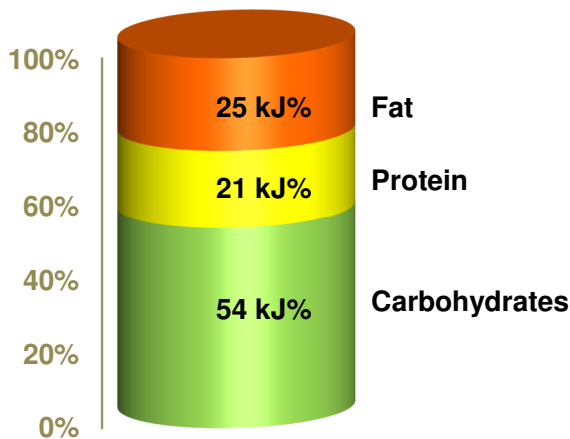
## Description

This purified diet contains 10 % hydrogenated coconut oil (saturated, middle-chain fatty acids) and will therefore induce a certain degree of obesity, when fed to satiation (ad libitum access).

*The diet is intended for ad libitum feeding. The animals should have free access to fresh water.*

**Gross Energy (GE)** 19.5 MJ/kg  
**Metabolizable Energy (ME)** <sup>1)</sup> 16.6 MJ/kg

<sup>1)</sup> = Physiological fuel value (Atwater); correspond to 3,970 kcal/kg



Crude Nutrients	[%]
Crude protein (N x 6.25)	21.0
Crude fat	11.0
Crude fibre	5.0
Crude ash	5.4
Starch	33.4
Sugar	18.9
N free extracts	53.5

Minerals	[%]
Calcium	0.92
Phosphorus	0.65
Ca / P	1.41 : 1
Sodium	0.20
Magnesium	0.23
Potassium	0.97

Amino acids	[%]
Lysine	1.75
Methionine	0.75
Cystine	0.29
Met+Cys	1.04
Threonine	0.93
Tryptophan	0.27
Arginine	0.83
Histidine	0.64
Valine	1.47
Isoleucine	1.19
Leucine	2.10
Phenylalanine	1.10
Phe+Tyr	2.22
Glycine	0.42
Glutamic acid	4.76
Aspartic acid	1.57
Proline	2.43
Serine	1.27
Alanine	0.64

Vitamins	per kg
Vitamin A	15,000 IU
Vitamin D <sub>3</sub>	1,500 IU
Vitamin E	150 mg
Vitamin K (as MNB)	20 mg
Thiamine (B <sub>1</sub> )	26 mg
Riboflavin (B <sub>2</sub> )	16 mg
Pyridoxine (B <sub>6</sub> )	16 mg
Cobalamin (B <sub>12</sub> )	30 µg
Nicotinic acid	49 mg
Pantothenic acid	55 mg
Folic acid	16 mg
Biotin	300 µg
Choline	920 mg

Fatty acids	[%]
C 6:0	0.03
C 8:0	0.59
C 10:0	0.48
C 12:0	4.58
C 14:0	1.97
C 16:0	1.18
C 18:0	1.29
C 20:0	0.02
C 16:1	—
C 18:1	0.27
C 18:2	0.43
C 18:3	0.05

Trace elements	per kg
Iron	168 mg
Manganese	98 mg
Zinc	67 mg
Copper	14 mg
Iodine	1.2 mg
Selenium	0.2 mg

## Main products

E15112-30 Meal / Powder  
 E15112-34 10 mm pellets  
 E15112-347 10 mm pellets, γ-irradiated 25 kGy

## Production and Sale

ssniff Spezialdiäten GmbH  
 Phone: +49-(0)2921-9658-0  
 Fax: +49-(0)2921-9658-40  
 E-Mail [mail@ssniff.de](mailto:mail@ssniff.de)  
[www.ssniff.de](http://www.ssniff.de) / [www.ssniff.com](http://www.ssniff.com)

# HF Coconut oil series

High fat diet for rodents | 24 % casein, 20 % coconut oil

ssniff



## Description

This purified diet contains 20 % hydrogenated coconut oil (saturated, middle-chain fatty acids) and will therefore induce obesity in rats and mice, when fed to satiation (ad libitum access).

*The diet is intended for ad libitum feeding. The animals should have free access to fresh water.*

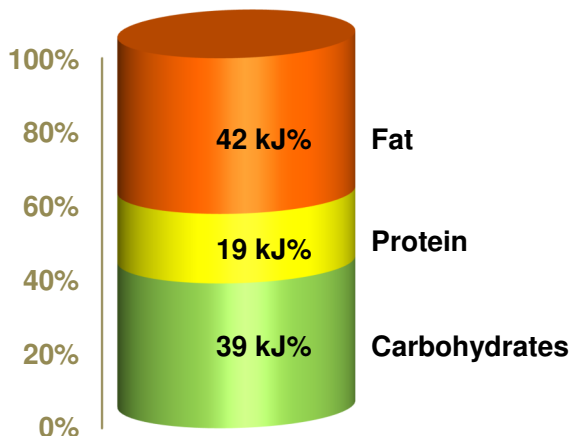
**Gross Energy (GE)**

**21.8 MJ/kg**

**Metabolizable Energy (ME) <sup>1)</sup>**

**18.8 MJ/kg**

<sup>1)</sup> = Physiological fuel value (Atwater); correspond to 4,485 kcal/kg



## Crude Nutrients

Crude Nutrients	[%]
Crude protein (N x 6.25)	21.0
Crude fat	20.9
Crude fibre	5.0
Crude ash	5.4
Starch	22.9
Sugar	19.9
N free extracts	43.9

## Minerals

Minerals	[%]
Calcium	0.92
Phosphorus	0.65
Ca / P	1.41 : 1
Sodium	0.20
Magnesium	0.23
Potassium	0.97

## Amino acids

Amino acids	[%]
Lysine	1.75
Methionine	0.75
Cystine	0.29
Met+Cys	1.04
Threonine	0.93
Tryptophan	0.27
Arginine	0.83
Histidine	0.64
Valine	1.47
Isoleucine	1.19
Leucine	2.10
Phenylalanine	1.10
Phe+Tyr	2.22
Glycine	0.42
Glutamic acid	4.76
Aspartic acid	1.57
Proline	2.43
Serine	1.27
Alanine	0.64

## Vitamins

Vitamins	per kg
Vitamin A	15,000 IU
Vitamin D <sub>3</sub>	1,500 IU
Vitamin E	150 mg
Vitamin K (as MNB)	20 mg
Thiamine (B <sub>1</sub> )	26 mg
Riboflavin (B <sub>2</sub> )	16 mg
Pyridoxine (B <sub>6</sub> )	16 mg
Cobalamin (B <sub>12</sub> )	30 µg
Nicotinic acid	49 mg
Pantothenic acid	55 mg
Folic acid	16 mg
Biotin	300 µg
Choline	920 mg

## Fatty acids

Fatty acids	[%]
C 6:0	0.06
C 8:0	1.18
C 10:0	0.96
C 12:0	9.15
C 14:0	3.94
C 16:0	2.23
C 18:0	2.54
C 20:0	0.03
C 16:1	—
C 18:1	0.31
C 18:2	0.43
C 18:3	0.05

## Trace elements

Trace elements	per kg
Iron	168 mg
Manganese	98 mg
Zinc	67 mg
Copper	14 mg
Iodine	1.2 mg
Selenium	0.2 mg

## Main products

E15114-30	Meal / Powder
E15114-34	10 mm pellets
E15114-347	10 mm pellets, γ-irradiated 25 kGy

## Production and Sale

ssniff Spezialdiäten GmbH  
 Phone: +49-(0)2921-9658-0  
 Fax: +49-(0)2921-9658-40  
 E-Mail: [mail@ssniff.de](mailto:mail@ssniff.de)  
[www.ssniff.de](http://www.ssniff.de) / [www.ssniff.com](http://www.ssniff.com)

# HF Coconut oil series

ssniff

High fat diet for mice | 24 % casein, 30 % coconut oil

## Description

This purified diet contains 30 % hydrogenated coconut oil (saturated, middle-chain fatty acids) and will therefore induce obesity in mice, when fed to satiation (ad libitum access).

*The diet is intended for ad libitum feeding. The animals should have free access to fresh water.*



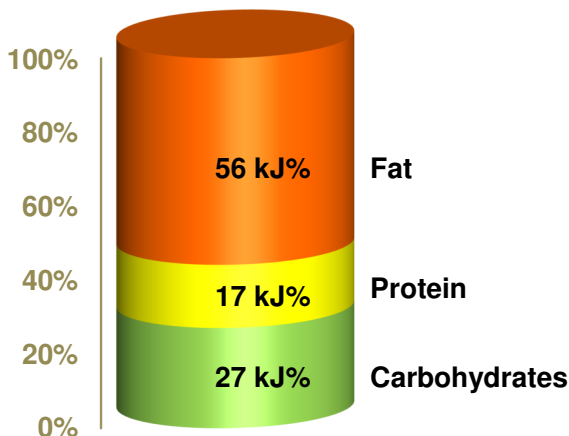
**Gross Energy (GE)**

**24.0 MJ/kg**

**Metabolizable Energy (ME) <sup>1)</sup>**

**21.0 MJ/kg**

<sup>1)</sup> = Physiological fuel value (Atwater); correspond to 5,010 kcal/kg



## Crude Nutrients

Crude Nutrients	[%]
Crude protein (N x 6.25)	21.0
Crude fat	30.9
Crude fibre	5.0
Crude ash	5.4
Starch	11.5
Sugar	21.7
N free extracts	34.4

## Minerals

Minerals	[%]
Calcium	0.92
Phosphorus	0.65
Ca / P	1.41 : 1
Sodium	0.20
Magnesium	0.23
Potassium	0.97

## Amino acids

Amino acids	[%]
Lysine	1.75
Methionine	0.75
Cystine	0.29
Met+Cys	1.04
Threonine	0.93
Tryptophan	0.27
Arginine	0.83
Histidine	0.64
Valine	1.47
Isoleucine	1.19
Leucine	2.10
Phenylalanine	1.10
Phe+Tyr	2.22
Glycine	0.42
Glutamic acid	4.76
Aspartic acid	1.57
Proline	2.43
Serine	1.27
Alanine	0.64

## Vitamins

Vitamins	per kg
Vitamin A	15,000 IU
Vitamin D <sub>3</sub>	1,500 IU
Vitamin E	150 mg
Vitamin K (as MNB)	20 mg
Thiamine (B <sub>1</sub> )	26 mg
Riboflavin (B <sub>2</sub> )	16 mg
Pyridoxine (B <sub>6</sub> )	16 mg
Cobalamin (B <sub>12</sub> )	30 µg
Nicotinic acid	49 mg
Pantothenic acid	55 mg
Folic acid	16 mg
Biotin	300 µg
Choline	920 mg

## Fatty acids

Fatty acids	[%]
C 6:0	0.09
C 8:0	1.77
C 10:0	1.44
C 12:0	13.71
C 14:0	5.90
C 16:0	3.28
C 18:0	3.79
C 20:0	0.05
C 16:1	—
C 18:1	0.35
C 18:2	0.44
C 18:3	0.05

## Trace elements

Trace elements	per kg
Iron	168 mg
Manganese	98 mg
Zinc	67 mg
Copper	14 mg
Iodine	1.2 mg
Selenium	0.2 mg

## Main products

E15116-30	Meal / Powder
E15116-34	10 mm pellets
E15116-347	10 mm pellets, γ-irradiated 25 kGy

## Production and Sale

ssniff Spezialdiäten GmbH  
 Phone: +49-(0)2921-9658-0  
 Fax: +49-(0)2921-9658-40  
 E-Mail: mail@ssniff.de  
[www.ssniff.de](http://www.ssniff.de) / [www.ssniff.com](http://www.ssniff.com)

# HF Tallow series

High fat diet for rodents | 24 % casein, 20 % beef tallow

**ssniff**



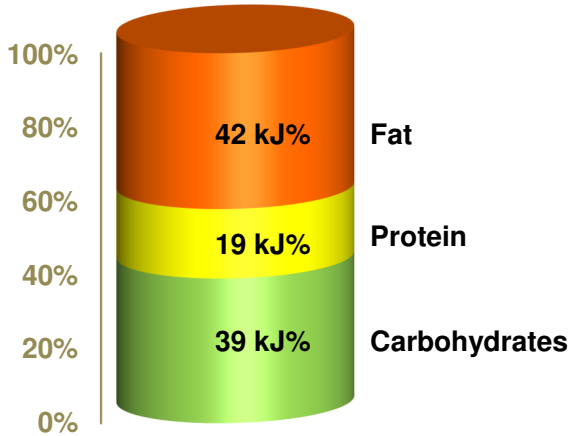
## Description

This purified diet contains 20 % beef tallow which is characterized by highly saturated, long-chain fatty acids. The diet will therefore induce obesity in rats and mice, when fed to satiation (ad libitum access); the diet can be supplemented with cholesterol (0.5 - 1.25 %).

*The diet is intended for ad libitum feeding. The animals should have free access to fresh water.*

**Gross Energy (GE)** 21.7 MJ/kg  
**Metabolizable Energy (ME)** <sup>1)</sup> 18.7 MJ/kg

<sup>1)</sup> = Physiological fuel value (Atwater); correspond to 4,475 kcal/kg



Crude Nutrients	[%]
Crude protein (N x 6.25)	21.0
Crude fat	20.7
Crude fibre	5.0
Crude ash	5.4
Starch	23.0
Sugar	19.9
N free extracts	44.1

Minerals	[%]
Calcium	0.92
Phosphorus	0.65
Ca / P	1.41 : 1
Sodium	0.20
Magnesium	0.23
Potassium	0.97

Amino acids	[%]
Lysine	1.75
Methionine	0.75
Cystine	0.29
Met+Cys	1.04
Threonine	0.93
Tryptophan	0.27
Arginine	0.83
Histidine	0.64
Valine	1.47
Isoleucine	1.19
Leucine	2.10
Phenylalanine	1.10
Phe+Tyr	2.22
Glycine	0.42
Glutamic acid	4.76
Aspartic acid	1.57
Proline	2.43
Serine	1.27
Alanine	0.64

Vitamins	per kg
Vitamin A	15,000 IU
Vitamin D <sub>3</sub>	1,500 IU
Vitamin E	150 mg
Vitamin K (as MNB)	20 mg
Thiamine (B <sub>1</sub> )	26 mg
Riboflavin (B <sub>2</sub> )	16 mg
Pyridoxine (B <sub>6</sub> )	16 mg
Cobalamin (B <sub>12</sub> )	30 µg
Nicotinic acid	49 mg
Pantothenic acid	55 mg
Folic acid	16 mg
Biotin	300 µg
Choline	920 mg

Fatty acids	[%]
C 12:0	0.03
C 14:0	0.75
C 16:0	5.12
C 17:0	0.24
C 18:0	3.81
C 20:0	0.02
C 16:1	0.84
C 18:1	7.47
C 18:2	0.88
C 18:3	0.14
C 20:4	0.05

Trace elements	per kg
Iron	168 mg
Manganese	98 mg
Zinc	67 mg
Copper	14 mg
Iodine	1.2 mg
Selenium	0.2 mg

## Main products

E15124-30 Meal / Powder  
 E15124-34 10 mm pellets  
 E15124-347 10 mm pellets, γ-irradiated 25 kGy

## Production and Sale

ssniff Spezialdiäten GmbH  
 Phone: +49-(0)2921-9658-0  
 Fax: +49-(0)2921-9658-40  
 E-Mail mail@ssniff.de  
[www.ssniff.de](http://www.ssniff.de) / [www.ssniff.com](http://www.ssniff.com)

# HF Tallow series

High fat diet for mice | 24 % casein, 30 % beef tallow

**ssniff**



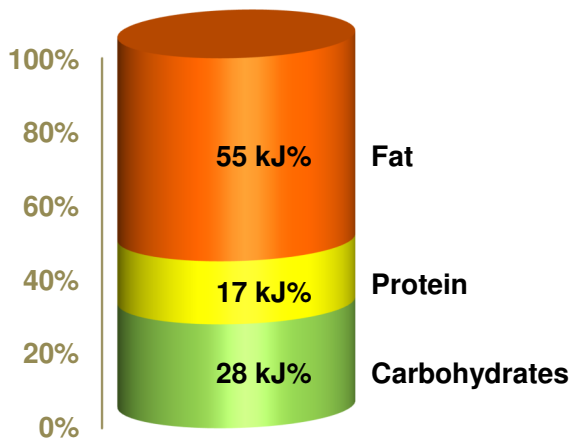
## Description

This purified diet contains 30 % beef tallow which is characterized by highly saturated, long-chain fatty acids. The diet will therefore induce obesity in mice, when fed to satiation (ad libitum access); the diet can be supplemented with cholesterol (0.5 - 1.25 %).

*The diet is intended for ad libitum feeding. The animals should have free access to fresh water.*

**Gross Energy (GE)** 23.9 MJ/kg  
**Metabolizable Energy (ME) <sup>1)</sup>** 20.9 MJ/kg

<sup>1)</sup> = Physiological fuel value (Atwater); correspond to 4,985 kcal/kg



Crude Nutrients	[%]
Crude protein (N x 6.25)	21.0
Crude fat	30.7
Crude fibre	5.0
Crude ash	5.4
Starch	16.3
Sugar	16.9
N free extracts	34.5

Minerals	[%]	Amino acids	[%]	Vitamins	per kg
Calcium	0.92	Lysine	1.75	Vitamin A	15,000 IU
Phosphorus	0.65	Methionine	0.75	Vitamin D <sub>3</sub>	1,500 IU
Ca / P	1.41 : 1	Cystine	0.29	Vitamin E	150 mg
Sodium	0.20	Met+Cys	1.04	Vitamin K (as MNB)	20 mg
Magnesium	0.23	Threonine	0.93	Thiamine (B <sub>1</sub> )	26 mg
Potassium	0.97	Tryptophan	0.27	Riboflavin (B <sub>2</sub> )	16 mg
		Arginine	0.83	Pyridoxine (B <sub>6</sub> )	16 mg
<b>Fatty acids</b>	<b>[%]</b>	Histidine	0.64	Cobalamin (B <sub>12</sub> )	30 µg
C 12:0	0.04	Valine	1.47	Nicotinic acid	49 mg
C 14:0	1.12	Isoleucine	1.19	Pantothenic acid	55 mg
C 16:0	7.62	Leucine	2.10	Folic acid	16 mg
C 17:0	0.36	Phenylalanine	1.10	Biotin	300 µg
C 18:0	5.69	Phe+Tyr	2.22	Choline	920 mg
C 20:0	0.03	Glycine	0.42		
C 16:1	1.26	Glutamic acid	4.76	<b>Trace elements</b>	<b>per kg</b>
C 18:1	11.11	Aspartic acid	1.57	Iron	168 mg
C 18:2	1.16	Proline	2.43	Manganese	98 mg
C 18:3	0.19	Serine	1.27	Zinc	67 mg
C 20:4	0.07	Alanine	0.64	Copper	14 mg
				Iodine	1.2 mg
				Selenium	0.2 mg

## Main products

E15126-30 Meal / Powder  
 E15126-34 10 mm pellets  
 E15126-347 10 mm pellets, γ-irradiated 25 kGy

*Cholesterol additions on request*

## Production and Sale

ssniff Spezialdiäten GmbH  
 Phone: +49-(0)2921-9658-0  
 Fax: +49-(0)2921-9658-40  
 E-Mail [mail@ssniff.de](mailto:mail@ssniff.de)  
[www.ssniff.de](http://www.ssniff.de) / [www.ssniff.com](http://www.ssniff.com)

# HF diet – 35 % Lard

ssniff

High fat diet for rodents with lard | corresponds to TD.03584



## Description

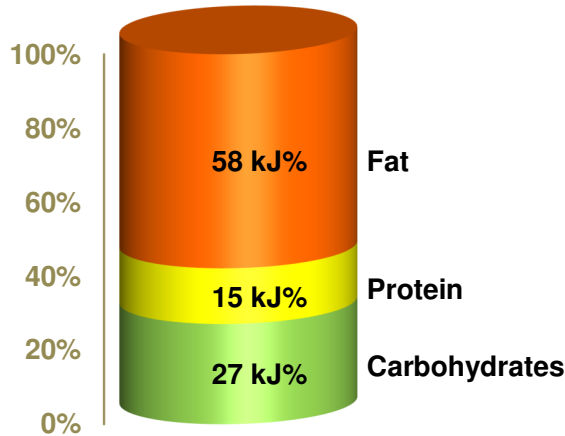
This purified diet is characterized by very high fat contents (lard). It is therefore used to induce obesity and metabolic syndrome / diabetes (NIDDM) in mice. The diet is also available with beef tallow as fat source (more saturated FA).

*The diet is intended for ad libitum feeding. The animals should have free access to fresh water.*

**Gross Energy (GE)** 25.1 MJ/kg

**Metabolizable Energy (ME)** <sup>1)</sup> 22.9 MJ/kg

<sup>1)</sup> = Physiological fuel value (Atwater); correspond to 5,470 kcal/kg



Crude Nutrients	[%]
Crude protein (N x 6.25)	20.2
Crude fat	35.1
Crude fibre	—
Crude ash	4.6
Starch	0.1
Sugar	17.0
Dextrins	19.2
N free extracts	37.6

Minerals	[%]
Calcium	0.82
Phosphorus	0.56
Ca / P	1.48 : 1
Sodium	0.19
Magnesium	0.13
Potassium	0.77

Amino acids	[%]
Lysine	1.68
Methionine	0.97
Cystine	0.09
Met+Cys	1.06
Threonine	0.89
Tryptophan	0.26
Arginine	0.79
Histidine	0.61
Valine	1.42
Isoleucine	1.15
Leucine	2.02
Phenylalanine	1.05
Phe+Tyr	2.12
Glycine	0.40
Glutamic acid	4.57
Aspartic acid	1.51
Proline	2.33
Serine	1.22
Alanine	0.61

Vitamins	per kg
Vitamin A	7,200 IU
Vitamin D <sub>3</sub>	1,800 IU
Vitamin E	135 mg
Vitamin K (as MNB)	6 mg
Thiamine (B <sub>1</sub> )	28 mg
Riboflavin (B <sub>2</sub> )	29 mg
Pyridoxine (B <sub>6</sub> )	12 mg
Cobalamin (B <sub>12</sub> )	45 µg
Nicotinic acid	53 mg
Pantothenic acid	27 mg
Folic acid	4 mg
Biotin	350 µg
Choline	1,350 mg

Fatty acids	[%]
C 12:0	0.08
C 14:0	0.48
C 16:0	8.43
C 18:0	4.73
C 20:0	0.11
C 16:1	1.04
C 18:1	14.65
C 18:2	3.32
C 18:3	0.35

Trace elements	per kg
Iron	68 mg
Manganese	30 mg
Zinc	57 mg
Copper	14 mg
Iodine	0.4 mg
Selenium	0.2 mg

## Main products

E15725-30 Meal / powder  
 E15725-34 10 mm pellets  
 E15725-347 10 mm pellets, γ-irradiated 25 kGy

*Extra cholesterol addition on request (customized)*

## Production and Sale

ssniff Spezialdiäten GmbH  
 Phone: +49-(0)2921-9658-0  
 Fax: +49-(0)2921-9658-40  
 E-Mail mail@ssniff.de  
[www.ssniff.de](http://www.ssniff.de) / [www.ssniff.com](http://www.ssniff.com)

# Rodent liquid diet – Regular

ssniff

Lieber DeCarli mod. diet for rats & mice with full maltodextrin content



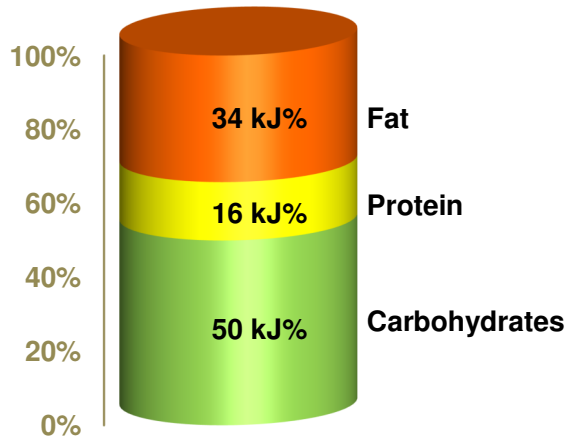
## Description

This purified diet is a modification of the diet published by Lieber and DeCarli. It is intended for liquid application: Please blend 230 (to 250 g) of the powder with 770 (750) mL of cold water for at least 30 sec. Please check the bottles regularly for clotted diet particles.

*Allow the animals to adjust to this liquid diet for at least 3 – 5 days.*

**Gross Energy (GE)** 21.2 MJ/kg  
**Metabolizable Energy (ME)** <sup>1)</sup> 18.5 MJ/kg

<sup>1)</sup> = Physiological fuel value (Atwater); correspond to 4,430 kcal/kg



Crude Nutrients	[%]
Crude protein (N x 6.25)	17.6
Crude fat	16.9
Crude fibre	4.5
Crude ash	3.1
Starch	0.1
Sugar	12.0
Dextrins	39.6
N free extracts	55.0

Minerals	[%]
Calcium	0.60
Phosphorus	0.50
Ca / P	1.19 : 1
Sodium	0.12
Magnesium	0.09
Potassium	0.43

Amino acids	[%]
Lysine	1.46
Methionine	0.80
Cystine	0.30
Met+Cys	1.10
Threonine	0.78
Tryptophan	0.23
Arginine	0.69
Histidine	0.53
Valine	1.23
Isoleucine	0.99
Leucine	1.75
Phenylalanine	0.92
Phe+Tyr	1.85
Glycine	0.36
Glutamic acid	3.97
Aspartic acid	1.31
Proline	2.02
Serine	1.05
Alanine	0.53

Vitamins	per kg
Vitamin A	18,000 IU
Vitamin D <sub>3</sub>	1,800 IU
Vitamin E	180 mg
Vitamin K (as MNB)	24 mg
Thiamine (B <sub>1</sub> )	30 mg
Riboflavin (B <sub>2</sub> )	19 mg
Pyridoxine (B <sub>6</sub> )	19 mg
Cobalamin (B <sub>12</sub> )	36 µg
Nicotinic acid	58 mg
Pantothenic acid	65 mg
Folic acid	19 mg
Biotin	360 µg
Choline	1,130 mg

Fatty acids	[%]
C 12:0	—
C 14:0	0.01
C 16:0	1.81
C 18:0	0.44
C 20:0	0.07
C 16:1	0.16
C 18:1	9.65
C 18:2	3.66
C 18:3	0.14

Trace elements	per kg
Iron	45 mg
Manganese	61 mg
Zinc	45 mg
Copper	8 mg
Iodine	0.3 mg
Selenium	0.2 mg

## Main products

Full maltodextrin addition, i.e. ethanol addition not possible  
 see E15784-30 for ethanol additions

E15785-30 Meal / powder  
 E15785-307 Meal / powder, γ-irradiated 25 kGy

## Production and Sale

ssniff Spezialdiäten GmbH  
 Phone: +49-(0)2921-9658-0  
 Fax: +49-(0)2921-9658-40  
 E-Mail mail@ssniff.de  
[www.ssniff.de](http://www.ssniff.de) / [www.ssniff.com](http://www.ssniff.com)

# Rodent liquid diet – Regular

ssniff

Lieber DeCarli diet for rats & mice for iso-caloric ethanol addition



## Description

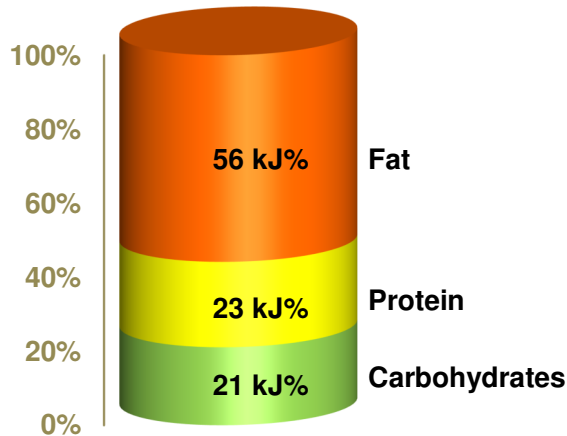
This purified diet is a modification of the diet published by Lieber and DeCarli. It is intended for liquid application: Please blend 132.18 g of the powder with up to 50 g ethanol and up to 817.82 mL of cold water for at least 30 sec (see below). Please check the bottles regularly for clotted diet particles.

*Allow the animals to adjust to this liquid diet for at least 3 – 7 days.*

**Gross Energy (GE) 24.2 MJ/kg**

**Metabolizable Energy (ME)<sup>1)</sup> 20.3 MJ/kg**

<sup>1)</sup> = Physiological fuel value (Atwater); correspond to 4,850 kcal/kg



Crude Nutrients	[%]
Crude protein (N x 6.25)	27.7
Crude fat	30.2
Crude fibre	7.6
Crude ash	5.0
Starch	0.1
Sugar	2.5
Dextrins	19.2
N free extracts	25.6

Minerals	[%]
Calcium	0.98
Phosphorus	0.82
Ca / P	1.19 : 1
Sodium	0.19
Magnesium	0.13
Potassium	0.70

Amino acids	[%]
Lysine	2.30
Methionine	1.08
Cystine	0.50
Met+Cys	1.58
Threonine	1.22
Tryptophan	0.36
Arginine	1.08
Histidine	0.83
Valine	1.93
Isoleucine	1.56
Leucine	2.75
Phenylalanine	1.44
Phe+Tyr	2.90
Glycine	0.55
Glutamic acid	6.24
Aspartic acid	2.06
Proline	3.17
Serine	1.66
Alanine	0.83

Vitamins	per kg
Vitamin A	45,600 IU
Vitamin D <sub>3</sub>	2,850 IU
Vitamin E	230 mg
Vitamin K (as MNB)	6 mg
Thiamine (B <sub>1</sub> )	9 mg
Riboflavin (B <sub>2</sub> )	9 mg
Pyridoxine (B <sub>6</sub> )	11 mg
Cobalamin (B <sub>12</sub> )	190 µg
Nicotinic acid	56 mg
Pantothenic acid	28 mg
Folic acid	3 mg
Biotin	380 µg
Choline	1,730 mg

Fatty acids	[%]
C 12:0	—
C 14:0	0.02
C 16:0	3.21
C 18:0	0.78
C 20:0	0.12
C 16:1	0.28
C 18:1	16.92
C 18:2	6.88
C 18:3	0.25

Trace elements	per kg
Iron	73 mg
Manganese	98 mg
Zinc	73 mg
Copper	12 mg
Iodine	0.4 mg
Selenium	0.3 mg

## Main products

E15784-30 Meal / powder  
E15784-307 Meal / powder,  
γ-irradiated 25 kGy

## Production and Sale

ssniff Spezialdiäten GmbH  
Phone: +49-(0)2921-9658-0  
Fax: +49-(0)2921-9658-40  
E-Mail mail@ssniff.de  
[www.ssniff.de](http://www.ssniff.de) / [www.ssniff.com](http://www.ssniff.com)

Ethanol	g	0.0	10.00	20.00	30.00	40.00	50.00
Dry diet	g	132.18	132.18	132.18	132.18	132.18	132.18
Maltodextrin	g	89.60	71.68	53.76	35.84	17.92	0.00
Water	g	778.22	786.14	794.06	801.98	809.90	817.82
Sum	g	1000.00	1000.00	1000.00	1000.00	1000.00	1000.00