

# Surwit without sucrose

ssniff

HF diet for rodents (hydrogenated coconut oil, starch) | correspond to D12230

## Description

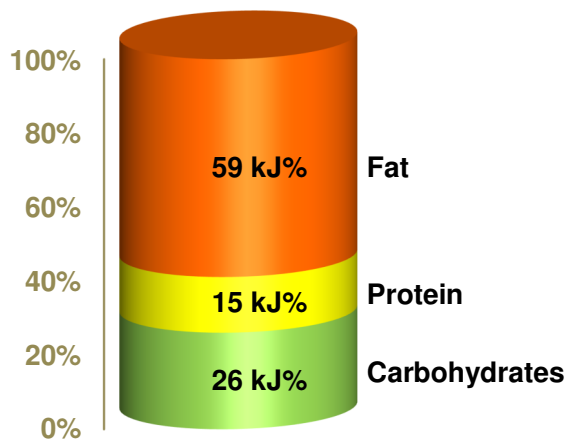
This purified diet is characterized by very high fat contents and saturated medium-chain fatty acids. It is therefore used to induce obesity in mice.

*The diet is intended for ad libitum feeding. The animals should have free access to fresh water.*



**Gross Energy (GE)** 25.0 MJ/kg  
**Metabolizable Energy (ME)** <sup>1)</sup> 22.7 MJ/kg

<sup>1)</sup> = Physiological fuel value (Atwater); correspond to 5,430 kcal/kg



Crude Nutrients	[%]
Crude protein (N x 6.25)	20.2
Crude fat	35.7
Crude fibre	0.5
Crude ash	5.4
Starch	16.3
Sugar	1.0
Dextrins	16.0
N free extracts	35.1

Minerals	[%]
Calcium	0.86
Phosphorus	0.62
Ca / P	1.38 : 1
Sodium	0.35
Magnesium	0.21
Potassium	0.89

Amino acids	[%]
Lysine	1.68
Methionine	0.73
Cystine	0.29
Met+Cys	1.02
Threonine	0.89
Tryptophan	0.26
Arginine	0.79
Histidine	0.61
Valine	1.42
Isoleucine	1.15
Leucine	2.02
Phenylalanine	1.05
Phe+Tyr	2.12
Glycine	0.40
Glutamic acid	4.57
Aspartic acid	1.51
Proline	2.33
Serine	1.22
Alanine	0.61

Vitamins	per kg
Vitamin A	15,000 IU
Vitamin D <sub>3</sub>	1,500 IU
Vitamin E	150 mg
Vitamin K (as MNB)	20 mg
Thiamine (B <sub>1</sub> )	25 mg
Riboflavin (B <sub>2</sub> )	16 mg
Pyridoxine (B <sub>6</sub> )	16 mg
Cobalamin (B <sub>12</sub> )	30 µg
Nicotinic acid	49 mg
Pantothenic acid	55 mg
Folic acid	16 mg
Biotin	300 µg
Choline	920 mg

Fatty acids	[%]
C 6:0	0.10
C 8:0	1.97
C 10:0	1.60
C 12:0	15.22
C 14:0	6.54
C 16:0	3.80
C 18:0	4.26
C 20:0	0.06
C 16:1	0.01
C 18:1	0.74
C 18:2	1.23
C 18:3	0.14

Trace elements	per kg
Iron	154 mg
Manganese	90 mg
Zinc	63 mg
Copper	13 mg
Iodine	1.1 mg
Selenium	0.2 mg

## Main products

E15771-30 Meal / powder  
 E15771-34 10 mm pellets  
 E15771-347 10 mm pellets, γ-irradiated 25 kGy

*For cholesterol addition see E15771-44*

## Production and Sale

ssniff Spezialdiäten GmbH  
 Phone: +49-(0)2921-9658-0  
 Fax: +49-(0)2921-9658-40  
 E-Mail mail@ssniff.de  
[www.ssniff.de](http://www.ssniff.de) / [www.ssniff.com](http://www.ssniff.com)

# Surwit w/o sucrose, +1 % Cholesterol

ssniff

HF diet for rodents (hydrogenated coconut oil, starch) | [D12330] NASH



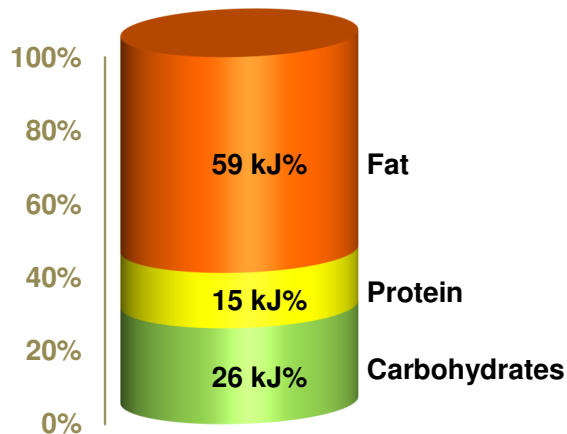
## Description

This purified diet is characterized by very high fat contents and saturated medium-chain fatty acids. It is therefore used to induce obesity in mice. The diet is also frequently used to induce NASH. The cholesterol addition can be increased to 2 %.

*The diet is intended for ad libitum feeding. The animals should have free access to fresh water.*

**Gross Energy (GE)** 25.0 MJ/kg  
**Metabolizable Energy (ME)** <sup>1)</sup> 22.7 MJ/kg

<sup>1)</sup> = Physiological fuel value (Atwater); correspond to 5,430 kcal/kg



Crude Nutrients	[%]
Crude protein (N x 6.25)	20.2
Crude fat	35.7
Crude fibre	0.5
Crude ash	5.4
Starch	15.4
Sugar	1.0
Dextrins	15.8
N free extracts	35.1

Minerals	[%]	Amino acids	[%]	Vitamins	per kg
Calcium	0.86	Lysine	1.68	Vitamin A	15,000 IU
Phosphorus	0.62	Methionine	0.73	Vitamin D <sub>3</sub>	1,500 IU
Ca / P	1.38 : 1	Cystine	0.29	Vitamin E	150 mg
Sodium	0.35	Met+Cys	1.02	Vitamin K (as MNB)	20 mg
Magnesium	0.21	Threonine	0.89	Thiamine (B <sub>1</sub> )	25 mg
Potassium	0.89	Tryptophan	0.26	Riboflavin (B <sub>2</sub> )	16 mg
		Arginine	0.79	Pyridoxine (B <sub>6</sub> )	16 mg
		Histidine	0.61	Cobalamin (B <sub>12</sub> )	30 µg
		Valine	1.42	Nicotinic acid	49 mg
		Isoleucine	1.15	Pantothenic acid	55 mg
		Leucine	2.02	Folic acid	16 mg
		Phenylalanine	1.05	Biotin	300 µg
		Phe+Tyr	2.12	Choline	920 mg
		Glycine	0.40		
		Glutamic acid	4.57	<b>Trace elements</b>	<b>per kg</b>
		Aspartic acid	1.51	Iron	154 mg
		Proline	2.33	Manganese	90 mg
		Serine	1.22	Zinc	63 mg
		Alanine	0.61	Copper	13 mg
				Iodine	1.1 mg
				Selenium	0.2 mg

## Main products

E15771-402 Meal / powder  
 E15771-442 10 mm pellets  
 E15771-4427 10 mm pellets, γ-irradiated 25 kGy

## Production and Sale

ssniff Spezialdiäten GmbH  
 Phone: +49-(0)2921-9658-0  
 Fax: +49-(0)2921-9658-40  
 E-Mail: mail@ssniff.de  
[www.ssniff.de](http://www.ssniff.de) / [www.ssniff.com](http://www.ssniff.com)

# Surwit with sucrose

HF diet for rodents (hydrogenated coconut oil) | corresponds to D12331

ssniff



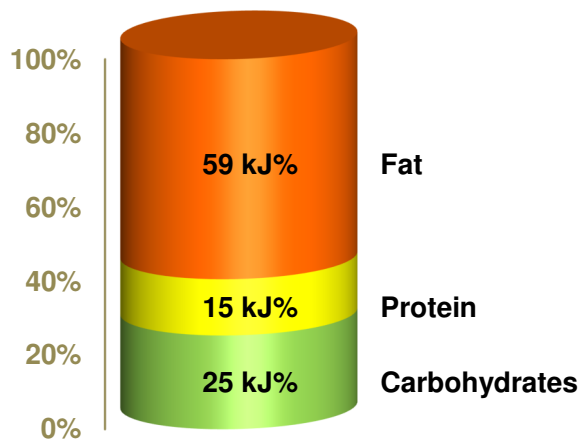
## Description

This purified diet is characterized by very high fat contents and saturated medium-chain fatty acids. It is therefore used to induce obesity in mice.

*The diet is intended for ad libitum feeding. The animals should have free access to fresh water.*

**Gross Energy (GE)** 25.1 MJ/kg  
**Metabolizable Energy (ME)** <sup>1)</sup> 22.6 MJ/kg

<sup>1)</sup> = Physiological fuel value (Atwater); correspond to 5,400 kcal/kg



Crude Nutrients	[%]
Crude protein (N x 6.25)	20.2
Crude fat	35.7
Crude fibre	0.5
Crude ash	5.1
Starch	—
Sugar	17.9
N free extracts	34.1

Minerals	[%]
Calcium	0.86
Phosphorus	0.61
Ca / P	1.39: 1
Sodium	0.35
Magnesium	0.20
Potassium	0.90

Amino acids	[%]
Lysine	1.69
Methionine	0.73
Cystine	0.29
Met+Cys	1.02
Threonine	0.89
Tryptophan	0.27
Arginine	0.79
Histidine	0.61
Valine	1.42
Isoleucine	1.15
Leucine	2.02
Phenylalanine	1.05
Phe+Tyr	2.12
Glycine	0.40
Glutamic acid	4.57
Aspartic acid	1.51
Proline	2.33
Serine	1.22
Alanine	0.61

Vitamins	per kg
Vitamin A	15,000 IU
Vitamin D <sub>3</sub>	1,500 IU
Vitamin E	154 mg
Vitamin K (as MNB)	20 mg
Thiamine (B <sub>1</sub> )	25 mg
Riboflavin (B <sub>2</sub> )	16 mg
Pyridoxine (B <sub>6</sub> )	16 mg
Cobalamin (B <sub>12</sub> )	30 µg
Nicotinic acid	49 mg
Pantothenic acid	55 mg
Folic acid	16 mg
Biotin	300 µg
Choline	920 mg

Fatty acids	[%]
C 6:0	0.10
C 8:0	1.97
C 10:0	1.60
C 12:0	15.22
C 14:0	6.54
C 16:0	3.80
C 18:0	4.26
C 20:0	0.06
C 16:1	0.01
C 18:1	0.74
C 18:2	1.23
C 18:3	0.14

Trace elements	per kg
Iron	154 mg
Manganese	90 mg
Zinc	63 mg
Copper	13 mg
Iodine	1.1 mg
Selenium	0.2 mg

## Main products

E15772-30 Meal / powder  
 E15772-34 10 mm pellets  
 E15772-347 10 mm pellets,  $\gamma$ -irradiated 25 kGy  
*Extra cholesterol addition on request (customized)*

## Production and Sale

ssniff Spezialdiäten GmbH  
 Phone: +49-(0)2921-9658-0  
 Fax: +49-(0)2921-9658-40  
 E-Mail [mail@ssniff.de](mailto:mail@ssniff.de)  
[www.ssniff.de](http://www.ssniff.de) / [www.ssniff.com](http://www.ssniff.com)

# Control (to Surwit), 13 kJ% fat

Low fat diet for rodents (soybean oil) | Surwit series

ssniff



## Description

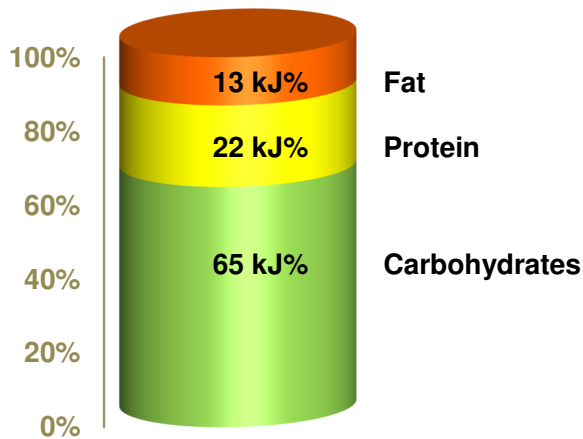
This purified diet has been designed to serve as control diet to the HF Surwit diets. The hydrogenated coconut oil has been replaced by soybean oil.

*The diet is intended for ad libitum feeding. The animals should have free access to fresh water.*

**Gross Energy (GE)** 18.4 MJ/kg

**Metabolizable Energy (ME)** <sup>1)</sup> 15.5 MJ/kg

<sup>1)</sup> = Physiological fuel value (Atwater); correspond to 3,695 kcal/kg



Crude Nutrients	[%]
Crude protein (N x 6.25)	20.2
Crude fat	5.4
Crude fibre	5.5
Crude ash	5.1
Starch	26.9
Sugar	15.9
N free extracts	60.0

Minerals	[%]
Calcium	0.86
Phosphorus	0.61
Ca / P	1.39: 1
Sodium	0.27
Magnesium	0.20
Potassium	0.89

Amino acids	[%]
Lysine	1.69
Methionine	0.73
Cystine	0.29
Met+Cys	1.02
Threonine	0.89
Tryptophan	0.27
Arginine	0.79
Histidine	0.61
Valine	1.42
Isoleucine	1.15
Leucine	2.02
Phenylalanine	1.05
Phe+Tyr	2.12
Glycine	0.40
Glutamic acid	4.57
Aspartic acid	1.51
Proline	2.33
Serine	1.22
Alanine	0.61

Vitamins	per kg
Vitamin A	15,000 IU
Vitamin D <sub>3</sub>	1,500 IU
Vitamin E	154 mg
Vitamin K (as MNB)	20 mg
Thiamine (B <sub>1</sub> )	25 mg
Riboflavin (B <sub>2</sub> )	16 mg
Pyridoxine (B <sub>6</sub> )	16 mg
Cobalamin (B <sub>12</sub> )	30 µg
Nicotinic acid	49 mg
Pantothenic acid	55 mg
Folic acid	16 mg
Biotin	300 µg
Choline	920 mg

Fatty acids	[%]
C 6:0	—
C 8:0	—
C 10:0	—
C 12:0	0.01
C 14:0	0.02
C 16:0	0.65
C 18:0	0.20
C 20:0	0.02
C 16:1	0.01
C 18:1	1.35
C 18:2	2.79
C 18:3	0.31

Trace elements	per kg
Iron	154 mg
Manganese	90 mg
Zinc	63 mg
Copper	13 mg
Iodine	1.1 mg
Selenium	0.2 mg

## Main products

E15772-00	Meal / powder
E15772-04	10 mm pellets
E15772-047	10 mm pellets, γ-irradiated 25 kGy

## Production and Sale

ssniff Spezialdiäten GmbH  
 Phone: +49-(0)2921-9658-0  
 Fax: +49-(0)2921-9658-40  
 E-Mail: mail@ssniff.de  
[www.ssniff.de](http://www.ssniff.de) / [www.ssniff.com](http://www.ssniff.com)

# Clinton/Cybulsky (II) – 40 kJ% fat

High fat diet for rodents | +1.25 % cholesterol

ssniff



## Description

This purified diet is characterized by high fat and high cholesterol contents. It has been designed to induce obesity and atherosclerosis in rodents

*The diet is intended for ad libitum feeding. The animals should have free access to fresh water.*

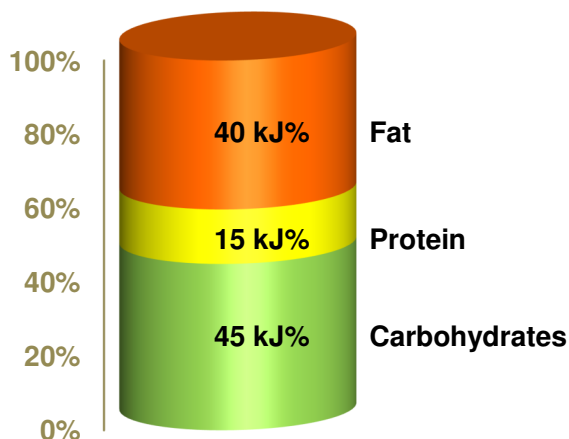
**Gross Energy (GE)**

**21.0 MJ/kg**

**Metabolizable Energy (ME)<sup>1)</sup>**

**18.4 MJ/kg**

<sup>1)</sup> = Physiological fuel value (Atwater); correspond to 4,390 kcal/kg



Crude Nutrients	[%]
Crude protein (N x 6.25)	17.1
Crude fat	19.5
Crude fibre	4.7
Crude ash	5.4
Starch	24.0
Dextrin	8.8
Sugar	15.0
N free extracts	48.9

Minerals	[%]
Calcium	0.90
Phosphorus	0.62
Ca / P	1.45 : 1
Sodium	0.19
Magnesium	0.21
Potassium	0.97

Amino acids	[%]
Lysine	1.39
Methionine	0.62
Cystine	0.35
Met+Cys	0.97
Threonine	0.75
Tryptophan	0.22
Arginine	0.66
Histidine	0.51
Valine	1.18
Isoleucine	0.94
Leucine	1.68
Phenylalanine	0.91
Phe+Tyr	1.80
Glycine	0.35
Glutamic acid	3.81
Aspartic acid	1.26
Proline	1.95
Serine	1.01
Alanine	0.55

Vitamins	per kg
Vitamin A	15,000 IU
Vitamin D <sub>3</sub>	2,500 IU
Vitamin E	150 mg
Vitamin K (as MNB)	20 mg
Thiamine (B <sub>1</sub> )	26 mg
Riboflavin (B <sub>2</sub> )	16 mg
Pyridoxine (B <sub>6</sub> )	16 mg
Cobalamin (B <sub>12</sub> )	30 µg
Niacin	45 mg
Pantothenic acid	55 mg
Folic acid	16 mg
Biotin	305 µg
Choline	900 mg

Fatty acids	[%]
C 12:0	—
C 14:0	0.03
C 16:0	4.53
C 18:0	5.89
C 20:0	0.17
C 16:1	0.07
C 18:1	5.97
C 18:2	1.65
C 18:3	0.17

Cholesterol 12,500 mg/kg

Trace elements	per kg
Iron	166 mg
Manganese	98 mg
Zinc	64 mg
Copper	13 mg
Iodine	1.2 mg
Selenium	0.16 mg

## Main products

E15751-30	Meal / powder
E15751-34	10 mm pellets
E15751-347	10 mm pellets, γ-irradiated 25 kGy

## Production and Sale

ssniff Spezialdiäten GmbH  
 Phone: +49-(0)2921-9658-0  
 Fax: +49-(0)2921-9658-40  
 E-Mail [mail@ssniff.de](mailto:mail@ssniff.de)  
[www.ssniff.de](http://www.ssniff.de) / [www.ssniff.com](http://www.ssniff.com)

# Clinton/Cybulsky (III) – 41 kJ% fat

High fat diet for rodents | 20 % fat, 1.25 % cholesterol

**ssniff**



## Description

This purified diet has high fat and high cholesterol contents. It has been designed to induce obesity and atherosclerosis in rodents

*The diet is intended for ad libitum feeding. The animals should have free access to fresh water.*

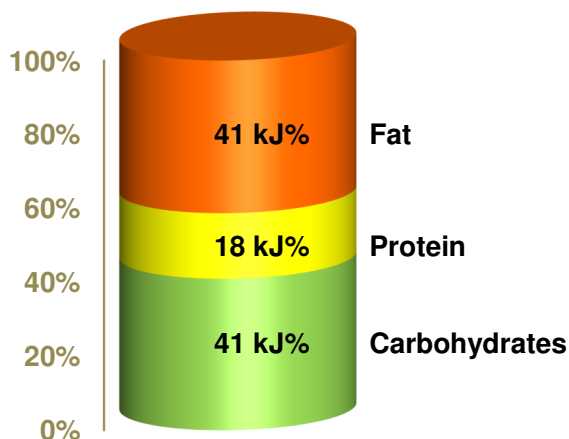
**Gross Energy (GE)**

**21.6 MJ/kg**

**Metabolizable Energy (ME)<sup>1)</sup>**

**18.7 MJ/kg**

<sup>1)</sup> = Physiological fuel value (Atwater); correspond to 4,465 kcal/kg



## Crude Nutrients

Crude Nutrients	[%]
Crude protein (N x 6.25)	20.3
Crude fat	20.2
Crude fibre	4.7
Crude ash	5.4
Starch	21.7
Dextrin	7.9
Sugar	13.9
N free extracts	46.0

## Minerals

Minerals	[%]
Calcium	0.92
Phosphorus	0.63
Ca / P	1.46 : 1
Sodium	0.20
Magnesium	0.22
Potassium	0.97

## Amino acids

Amino acids	[%]
Lysine	1.69
Methionine	0.73
Cystine	0.38
Met+Cys	1.11
Threonine	0.89
Tryptophan	0.27
Arginine	0.79
Histidine	0.61
Valine	1.42
Isoleucine	1.15
Leucine	2.02
Phenylalanine	1.05
Phe+Tyr	2.12
Glycine	0.40
Glutamic acid	4.57
Aspartic acid	1.51
Proline	2.33
Serine	1.22
Alanine	0.61

## Vitamins

Vitamins	per kg
Vitamin A	15,000 IU
Vitamin D <sub>3</sub>	2,500 IU
Vitamin E	150 mg
Vitamin K (as MNB)	20 mg
Thiamine (B <sub>1</sub> )	26 mg
Riboflavin (B <sub>2</sub> )	16 mg
Pyridoxine (B <sub>6</sub> )	16 mg
Cobalamin (B <sub>12</sub> )	30 µg
Nicotinic acid	49 mg
Pantothenic acid	55 mg
Folic acid	16 mg
Biotin	300 µg
Choline	900 mg

## Fatty acids

Fatty acids	[%]
C 12:0	—
C 14:0	0.03
C 16:0	4.69
C 18:0	6.15
C 20:0	0.19
C 16:1	0.07
C 18:1	6.26
C 18:2	1.61
C 18:3	0.19

Cholesterol 12,500 mg/kg

## Trace elements

Trace elements	per kg
Iron	165 mg
Manganese	98 mg
Zinc	66 mg
Copper	13 mg
Iodine	1.2 mg
Selenium	0.2 mg

## Main products

E15752-30	Meal / powder
E15752-34	10 mm pellets
E15752-347	10 mm pellets, γ-irradiated 25 kGy

## Production and Sale

ssniff Spezialdiäten GmbH  
 Phone: +49-(0)2921-9658-0  
 Fax: +49-(0)2921-9658-40  
 E-Mail: mail@ssniff.de  
[www.ssniff.de](http://www.ssniff.de) / [www.ssniff.com](http://www.ssniff.com)

# Clinton/Cybulsky – Control

Low fat diet for rodents | 10 kJ% fat

ssniff



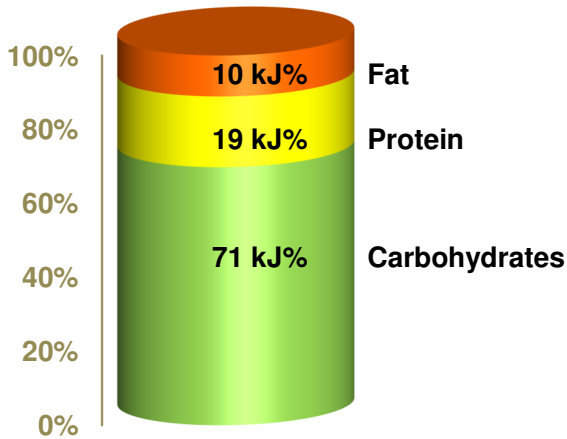
## Description

This purified diet is the ingredient matched control diet for the high fat, high cholesterol Clinton/Cybulsky diets.

*The diet is intended for ad libitum feeding. The animals should have free access to fresh water.*

**Gross Energy (GE)** 17.9 MJ/kg  
**Metabolizable Energy (ME)<sup>1)</sup>** 15.3 MJ/kg

<sup>1)</sup> = Physiological fuel value (Atwater); correspond to 3,660 kcal/kg



Crude Nutrients	[%]
Crude protein (N x 6.25)	17.2
Crude fat	4.1
Crude fibre	4.7
Crude ash	5.4
Starch	33.0
Dextrin	10.9
Sugar	19.9
N free extracts	64.8

Minerals	[%]
Calcium	0.92
Phosphorus	0.63
Ca / P	1.46 : 1
Sodium	0.20
Magnesium	0.22
Potassium	0.97

Amino acids	[%]
Lysine	1.43
Methionine	0.63
Cystine	0.35
Met+Cys	0.98
Threonine	0.76
Tryptophan	0.22
Arginine	0.67
Histidine	0.52
Valine	1.20
Isoleucine	0.97
Leucine	1.71
Phenylalanine	0.89
Phe+Tyr	1.80
Glycine	0.34
Glutamic acid	3.87
Aspartic acid	1.28
Proline	1.97
Serine	1.03
Alanine	0.52

Vitamins	per kg
Vitamin A	15,000 IU
Vitamin D <sub>3</sub>	2,500 IU
Vitamin E	150 mg
Vitamin K (as MNB)	20 mg
Thiamine (B <sub>1</sub> )	26 mg
Riboflavin (B <sub>2</sub> )	16 mg
Pyridoxine (B <sub>6</sub> )	16 mg
Cobalamin (B <sub>12</sub> )	30 µg
Nicotinic acid	49 mg
Pantothenic acid	55 mg
Folic acid	16 mg
Biotin	300 µg
Choline	900 mg

Fatty acids	[%]
C 12:0	—
C 14:0	0.02
C 16:0	0.75
C 18:0	0.74
C 20:0	0.03
C 16:1	0.01
C 18:1	1.16
C 18:2	1.15
C 18:3	0.13

Trace elements	per kg
Iron	165 mg
Manganese	98 mg
Zinc	66 mg
Copper	13 mg
Iodine	1.2 mg
Selenium	0.2 mg

## Main products

E15750-00	Meal / powder
E15750-04	10 mm pellets
E15750-047	10 mm pellets, γ-irradiated 25 kGy

## Production and Sale

ssniff Spezialdiäten GmbH  
 Phone: +49-(0)2921-9658-0  
 Fax: +49-(0)2921-9658-40  
 E-Mail: mail@ssniff.de  
[www.ssniff.de](http://www.ssniff.de) / [www.ssniff.com](http://www.ssniff.com)

# EF Adjusted Fat Diet – 47 kJ% fat

ssniff

High fat diet for rodents | 25 % fat, corresponds to TD.97366



## Description

This purified diet is characterized by high fat contents. It has been designed to induce obesity and metabolic syndrome in rodents.

*The diet is intended for ad libitum feeding. The animals should have free access to fresh water.*

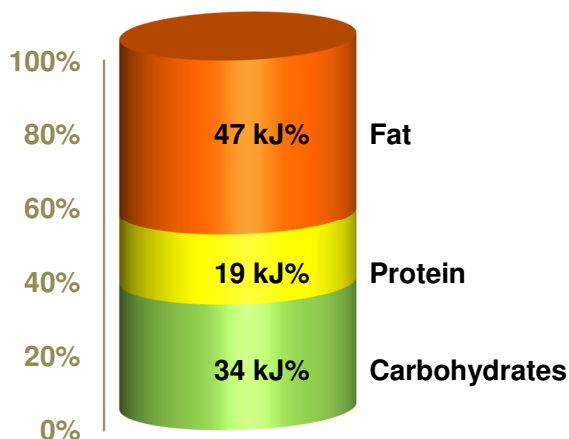
**Gross Energy (GE)**

**22.9 MJ/kg**

**Metabolizable Energy (ME)<sup>1)</sup>**

**20.0 MJ/kg**

<sup>1)</sup> = Physiological fuel value (Atwater); correspond to 4,785 kcal/kg



Crude Nutrients	[%]
Crude protein (N x 6.25)	22.2
Crude fat	25.2
Crude fibre	4.0
Crude ash	4.4
Starch	11.2
Dextrin	16.8
Sugar	11.3
N free extracts	40.8

Minerals	[%]
Calcium	0.84
Phosphorus	0.60
Ca / P	1.41 : 1
Sodium	0.18
Magnesium	0.12
Potassium	0.68

Amino acids	[%]
Lysine	1.59
Methionine	1.03
Cystine	0.19
Met+Cys	1.22
Threonine	0.92
Tryptophan	0.28
Arginine	0.87
Histidine	0.65
Valine	1.47
Isoleucine	1.17
Leucine	2.09
Phenylalanine	1.15
Phe+Tyr	2.23
Glycine	0.50
Glutamic acid	5.38
Aspartic acid	1.50
Proline	2.54
Serine	1.28
Alanine	0.66

Vitamins	per kg
Vitamin A	21,400 IU
Vitamin D <sub>3</sub>	2,400 IU
Vitamin E	135 mg
Vitamin K (as MNB)	50 mg
Thiamine (B <sub>1</sub> )	24 mg
Riboflavin (B <sub>2</sub> )	24 mg
Pyridoxine (B <sub>6</sub> )	24 mg
Cobalamin (B <sub>12</sub> )	33 µg
Nicotinic acid	100 mg
Pantothenic acid	65 mg
Folic acid	2 mg
Biotin	490 µg
Choline	2,000 mg

Fatty acids	[%]
C 6:0	0.02
C 8:0	0.41
C 10:0	0.34
C 12:0	3.22
C 14:0	1.97
C 16:0	5.02
C 18:0	3.94
C 20:0	0.03
C 16:1	0.67
C 18:1	6.49
C 18:2	1.51
C 18:3	0.10

Trace elements	per kg
Iron	71 mg
Manganese	27 mg
Zinc	54 mg
Copper	13 mg
Iodine	0.35 mg
Selenium	0.23 mg

## Main products

E15797-34 10 mm pellets  
 E15797-347 10 mm pellets, γ-irradiated 25 kGy  
 E15797-3404 10 mm pellets, RED

## Production and Sale

ssniff Spezialdiäten GmbH  
 Phone: +49-(0)2921-9658-0  
 Fax: +49-(0)2921-9658-40  
 E-Mail [mail@ssniff.de](mailto:mail@ssniff.de)  
[www.ssniff.de](http://www.ssniff.de) / [www.ssniff.com](http://www.ssniff.com)

# EF Control to 'adjusted fat'

ssniff

Low fat diet for rodents – 15 kJ% | 6 % fat, [Control to TD.97366]



## Description

This purified diet has a low fat content and may serve as the control diet to the 'adjusted fat' diet [TD.97366]. The fatty acid profile is characterized by the vegetable fat source.

*The diet is intended for ad libitum feeding. The animals should have free access to fresh water.*

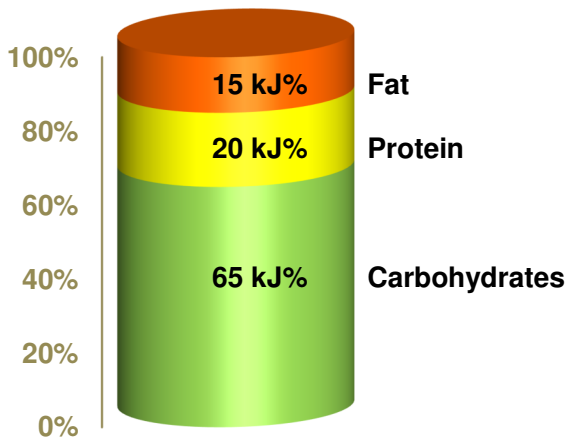
**Gross Energy (GE)**

**18.5 MJ/kg**

**Metabolizable Energy (ME) <sup>1)</sup>**

**15.6 MJ/kg**

<sup>1)</sup> = Physiological fuel value (Atwater); correspond to 3,735 kcal/kg



## Crude Nutrients

Crude Nutrients	[%]
Crude protein (N x 6.25)	18.4
Crude fat	6.1
Crude fibre	6.0
Crude ash	4.4
Starch	29.3
Dextrin	19.5
Sugar	11.3
N free extracts	61.0

## Minerals

Minerals	[%]
Calcium	0.85
Phosphorus	0.60
Ca / P	1.42 : 1
Sodium	0.19
Magnesium	0.12
Potassium	0.69

## Amino acids

Amino acids	[%]
Lysine	1.52
Methionine	0.74
Cystine	0.28
Met+Cys	1.02
Threonine	0.80
Tryptophan	0.24
Arginine	0.71
Histidine	0.55
Valine	1.27
Isoleucine	1.03
Leucine	1.81
Phenylalanine	0.95
Phe+Tyr	1.91
Glycine	0.36
Glutamic acid	4.11
Aspartic acid	1.36
Proline	2.09
Serine	1.09
Alanine	0.55

## Vitamins

Vitamins	per kg
Vitamin A	21,400 IU
Vitamin D <sub>3</sub>	2,400 IU
Vitamin E	130 mg
Vitamin K (as MNB)	50 mg
Thiamine (B <sub>1</sub> )	24 mg
Riboflavin (B <sub>2</sub> )	24 mg
Pyridoxine (B <sub>6</sub> )	24 mg
Cobalamin (B <sub>12</sub> )	33 µg
Nicotinic acid	100 mg
Pantothenic acid	65 mg
Folic acid	2 mg
Biotin	490 µg
Choline	2,000 mg

## Fatty acids

Fatty acids	[%]
C 6:0	—
C 8:0	—
C 10:0	—
C 12:0	—
C 14:0	0.02
C 16:0	0.72
C 18:0	0.22
C 20:0	0.02
C 16:1	0.01
C 18:1	1.53
C 18:2	3.16
C 18:3	0.35

## Trace elements

Trace elements	per kg
Iron	62 mg
Manganese	27 mg
Zinc	54 mg
Copper	13 mg
Iodine	0.35 mg
Selenium	0.20 mg

## Main products

E15796-04	10 mm pellets
E15796-047	10 mm pellets, γ-irradiated 25 kGy
E15796-0403	10 mm pellets, GREEN

## Production and Sale

ssniff Spezialdiäten GmbH  
 Phone: +49-(0)2921-9658-0  
 Fax: +49-(0)2921-9658-40  
 E-Mail [mail@ssniff.de](mailto:mail@ssniff.de)  
[www.ssniff.de](http://www.ssniff.de) / [www.ssniff.com](http://www.ssniff.com)