

Western diet – 0.21 % Cholesterol

ssniff

HF / High cholesterol diet for mice | corresponds to TD.88137



Description

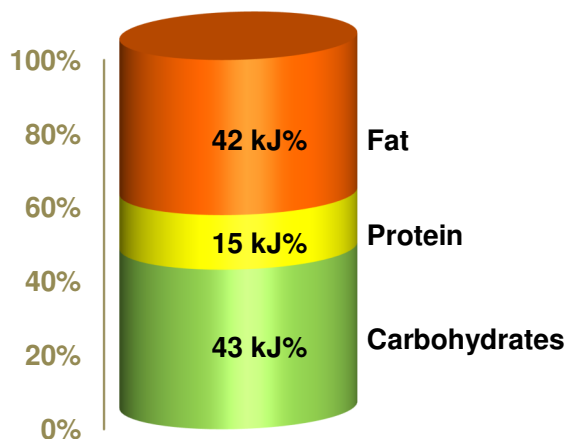
The Western diet contains 21 % butter fat and app. 0.21 % cholesterol (0.15 % supplemented). This diet will therefore induce hyperlipidemic disorders, hypercholesterolemia and atherosclerosis, i.e. plaque formation, in ApoE- and Ldlr-deficient mice.

The diet is intended for ad libitum feeding. The animals should have free access to fresh water.

Gross Energy (GE) **21.8 MJ/kg**

Metabolizable Energy (ME)¹⁾ **19.1 MJ/kg**

¹⁾ = Physiological fuel value (Atwater); correspond to 4,575 kcal/kg



Crude Nutrients	[%]
Crude protein (N x 6.25)	17.3
Crude fat	21.1
Crude fibre	5.0
Crude ash	4.2
Starch	14.4
Sugar	34.3
N free extracts	49.8

Minerals	[%]
Calcium	0.76
Phosphorus	0.45
Ca / P	1.69 : 1
Sodium	0.24
Magnesium	0.10
Potassium	0.54

Amino acids	[%]
Lysine	1.43
Methionine	0.93
Cystine	0.07
Met+Cys	1.00
Threonine	0.76
Tryptophan	0.22
Arginine	0.67
Histidine	0.52
Valine	1.20
Isoleucine	0.97
Leucine	1.71
Phenylalanine	0.89
Phe+Tyr	1.80
Glycine	0.34
Glutamic acid	3.88
Aspartic acid	1.28
Proline	1.97
Serine	1.03
Alanine	0.52

Vitamins	per kg
Vitamin A	15,000 IU
Vitamin D ₃	1,500 IU
Vitamin E	150 mg
Vitamin K (as MNB)	20 mg
Thiamine (B ₁)	26 mg
Riboflavin (B ₂)	16 mg
Pyridoxine (B ₆)	16 mg
Cobalamin (B ₁₂)	30 µg
Nicotinic acid	49 mg
Pantothenic acid	55 mg
Folic acid	16 mg
Biotin	300 µg
Choline	920 mg

Fatty acids	[%]
C 4:0	0.80
C 6:0	0.53
C 8:0	0.29
C 10:0	0.63
C 12:0	0.72
C 14:0	2.22
C 16:0	5.60
C 17:0	0.14
C 18:0	2.05
C 20:0	0.04
C 16:1	0.38
C 18:1	4.65
C 18:2	0.38
C 18:3	0.11

Cholesterol 2,070 mg/kg

Trace elements	per kg
Iron	49 mg
Manganese	22 mg
Zinc	41 mg
Copper	11 mg
Iodine	0.3 mg
Selenium	0.2 mg

Main products

E15721-34 10 mm pellets
E15721-347 10 mm pellets, γ-irradiated 25 kGy
For higher cholesterol additions see E15723-34 / -347

Production and Sale

ssniff Spezialdiäten GmbH
Phone: +49-(0)2921-9658-0
Fax: +49-(0)2921-9658-40
E-Mail mail@ssniff.de
www.ssniff.de / www.ssniff.com

Western diet, 1.25 % Cholesterol

ssniff

HF / High cholesterol diet for mice | corresponds to TD.88137



Description

The Western diet contains 21 % butter fat and app. 1.3 % cholesterol (1.25 % supplemented). This diet will therefore induce hypercholesterolemia and atherosclerosis, i.e. plaque formation, in ApoE- and Ldlr-deficient mice.

The diet is intended for ad libitum feeding. The animals should have free access to fresh water.

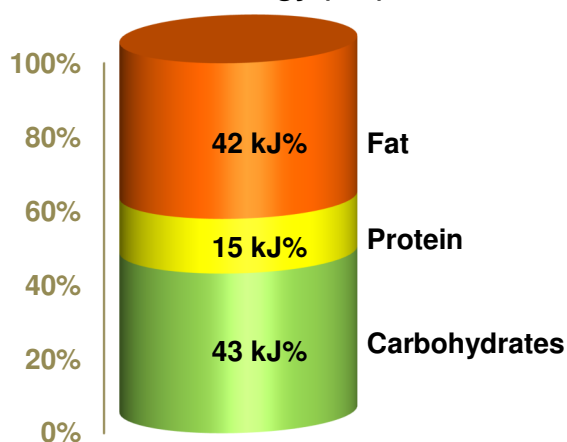
Gross Energy (GE)

21.8 MJ/kg

Metabolizable Energy (ME) ¹⁾

19.1 MJ/kg

¹⁾ = Physiological fuel value (Atwater); correspond to 4,575 kcal/kg



Crude Nutrients	[%]
Crude protein (N x 6.25)	17.3
Crude fat	21.1
Crude fibre	5.0
Crude ash	4.2
Starch	13.4
Sugar	34.1
N free extracts	48.7

Minerals	[%]
Calcium	0.76
Phosphorus	0.45
Ca / P	1.69 : 1
Sodium	0.24
Magnesium	0.10
Potassium	0.54

Amino acids	[%]
Lysine	1.43
Methionine	0.93
Cystine	0.07
Met+Cys	1.00
Threonine	0.76
Tryptophan	0.22
Arginine	0.67
Histidine	0.52
Valine	1.20
Isoleucine	0.97
Leucine	1.71
Phenylalanine	0.89
Phe+Tyr	1.80
Glycine	0.34
Glutamic acid	3.88
Aspartic acid	1.28
Proline	1.97
Serine	1.03
Alanine	0.52

Vitamins	per kg
Vitamin A	15,000 IU
Vitamin D ₃	1,500 IU
Vitamin E	150 mg
Vitamin K (as MNB)	20 mg
Thiamine (B ₁)	26 mg
Riboflavin (B ₂)	16 mg
Pyridoxine (B ₆)	16 mg
Cobalamin (B ₁₂)	30 µg
Nicotinic acid	49 mg
Pantothenic acid	55 mg
Folic acid	16 mg
Biotin	300 µg
Choline	920 mg

Fatty acids	[%]
C 4:0	0.80
C 6:0	0.53
C 8:0	0.29
C 10:0	0.63
C 12:0	0.72
C 14:0	2.22
C 16:0	5.60
C 17:0	0.14
C 18:0	2.05
C 20:0	0.04
C 16:1	0.38
C 18:1	4.65
C 18:2	0.38
C 18:3	0.11

Cholesterol 12,950 mg/kg

Trace elements	per kg
Iron	49 mg
Manganese	22 mg
Zinc	41 mg
Copper	11 mg
Iodine	0.3 mg
Selenium	0.2 mg

Main products

E15723-34 10 mm pellets
E15723-347 10 mm pellets, γ-irradiated 25 kGy
E15723-343 10 mm pellets | GREEN

Production and Sale

ssniff Spezialdiäten GmbH
Phone: +49-(0)2921-9658-0
Fax: +49-(0)2921-9658-40
E-Mail mail@ssniff.de
www.ssniff.de / www.ssniff.com

Control to Western

ssniff

Low fat control diet to the Western diets | CD.88137



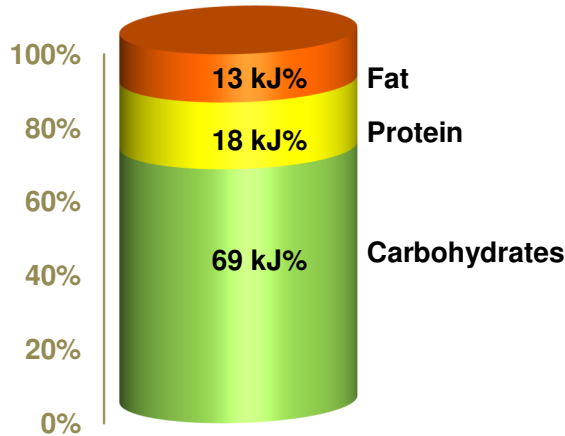
Description

This diet has been designed as control diet to the Western diets. It is characterized by low sugar and fat contents; the butter fat has been exchanged by soybean oil.

The diet is intended for ad libitum feeding. The animals should have free access to fresh water.

Gross Energy (GE) **18.3 MJ/kg**
Metabolizable Energy (ME) ¹⁾ **15.7 MJ/kg**

¹⁾ = Physiological fuel value (Atwater); correspond to 3,750 kcal/kg



Crude Nutrients	[%]
Crude protein (N x 6.25)	17.3
Crude fat	5.1
Crude fibre	5.0
Crude ash	3.9
Starch	38.5
Sugar	11.0
N free extracts	64.7

Minerals	[%]	Amino acids	[%]	Vitamins	per kg
Calcium	0.76	Lysine	1.43	Vitamin A	15,000 IU
Phosphorus	0.48	Methionine	0.73	Vitamin D ₃	1,500 IU
Ca / P	1.57 : 1	Cystine	0.27	Vitamin E	150 mg
Sodium	0.16	Met+Cys	1.00	Vitamin K (as MNB)	20 mg
Magnesium	0.10	Threonine	0.76	Thiamine (B ₁)	26 mg
Potassium	0.55	Tryptophan	0.22	Riboflavin (B ₂)	16 mg
		Arginine	0.67	Pyridoxine (B ₆)	16 mg
		Histidine	0.52	Cobalamin (B ₁₂)	30 µg
		Valine	1.20	Nicotinic acid	49 mg
		Isoleucine	0.97	Pantothenic acid	55 mg
		Leucine	1.71	Folic acid	16 mg
		Phenylalanine	0.89	Biotin	300 µg
		Phe+Tyr	1.80	Choline	920 mg
		Glycine	0.34		
		Glutamic acid	3.88	Trace elements	per kg
		Aspartic acid	1.28	Iron	49 mg
		Proline	1.97	Manganese	22 mg
		Serine	1.03	Zinc	41 mg
		Alanine	0.52	Copper	11 mg
				Iodine	0.3 mg
				Selenium	0.2 mg
Cholesterol	— mg/kg				

Main products

E15720-04 10 mm pellets
 E15720-047 10 mm pellets, γ-irradiated 25 kGy

Production and Sale

ssniff Spezialdiäten GmbH
 Phone: +49-(0)2921-9658-0
 Fax: +49-(0)2921-9658-40
 E-Mail mail@ssniff.de
www.ssniff.de / www.ssniff.com

Western diet – butter / corn oil

ssniff

HF / High cholesterol (0.21 %) diet for mice | correspond to D12079



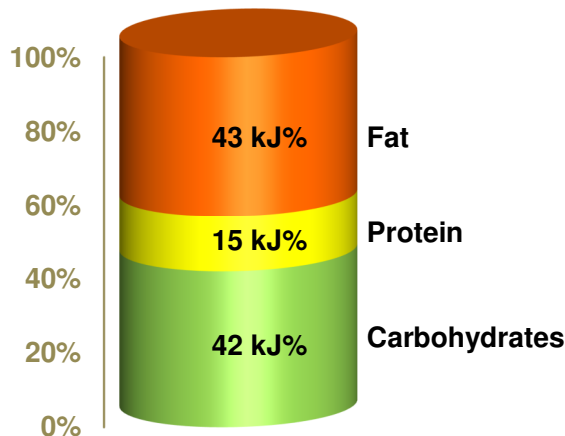
Description

The Western diet contains 21 % butter fat and app. 0.21 % cholesterol. This diet will therefore induce hyperlipidemic disorders, hypercholesterolemia and atherosclerosis, i.e. plaque formation, in ApoE- and Ldlr-deficient mice. This diet contains additional 1 % of corn oil to increase the essential fatty acids. The diet is available with 1.25 % cholesterol.

The diet is intended for ad libitum feeding. The animals should have free access to fresh water.

Gross Energy (GE) 22.1 MJ/kg
Metabolizable Energy (ME) ¹⁾ 19.2 MJ/kg

¹⁾ = Physiological fuel value (Atwater); correspond to 4,595 kcal/kg



Crude Nutrients	[%]
Crude protein (N x 6.25)	17.3
Crude fat	22.0
Crude fibre	5.6
Crude ash	4.2
Starch	4.8
Sugar	34.4
N free extracts	48.3

Minerals	[%]	Amino acids	[%]	Vitamins	per kg
Calcium	0.76	Lysine	1.43	Vitamin A	15,000 IU
Phosphorus	0.45	Methionine	0.63	Vitamin D ₃	1,500 IU
Ca / P	1.69 : 1	Cystine	0.37	Vitamin E	150 mg
Sodium	0.24	Met+Cys	1.00	Vitamin K (as MNB)	20 mg
Magnesium	0.10	Threonine	0.76	Thiamine (B ₁)	26 mg
Potassium	0.54	Tryptophan	0.22	Riboflavin (B ₂)	16 mg
		Arginine	0.67	Pyridoxine (B ₆)	16 mg
Fatty acids	[%]	Histidine	0.52	Cobalamin (B ₁₂)	30 µg
C 4:0	0.80	Valine	1.20	Nicotinic acid	49 mg
C 6:0	0.53	Isoleucine	0.97	Pantothenic acid	55 mg
C 8:0	0.29	Leucine	1.71	Folic acid	16 mg
C 10:0	0.63	Phenylalanine	0.89	Biotin	300 µg
C 12:0	0.72	Phe+Tyr	1.80	Choline	920 mg
C 14:0	2.22	Glycine	0.34		
C 16:0	5.71	Glutamic acid	3.88	Trace elements	per kg
C 17:0	0.14	Aspartic acid	1.28	Iron	49 mg
C 18:0	2.07	Proline	1.97	Manganese	22 mg
C 20:0	0.04	Serine	1.03	Zinc	41 mg
C 16:1	0.38	Alanine	0.52	Copper	11 mg
C 18:1	4.90			Iodine	0.3 mg
C 18:2	0.93			Selenium	0.2 mg
C 18:3	0.12	Cholesterol	2,110 mg/kg		

Main products

E15775-34 10 mm pellets
 E15775-347 10 mm pellets, γ-irradiated 25 kGy
 E15776-34 1.25 % Cholesterol, 10 mm

Production and Sale

ssniff Spezialdiäten GmbH
 Phone: +49-(0)2921-9658-0
 Fax: +49-(0)2921-9658-40
 E-Mail mail@ssniff.de
www.ssniff.de / www.ssniff.com

HF diet, 1.25 % Cholesterol

ssniff

HF / High cholesterol diet for mice | corresponds to D12108



Description

This HF diet contains 17.3 % cocoa butter and app. 1.25 % cholesterol. This diet will therefore induce hyperlipidemic disorders, hypercholesterolemia and atherosclerosis, i.e. plaque formation, in ApoE- and Ldlr-deficient mice.

The diet is intended for ad libitum feeding. The animals should have free access to fresh water.

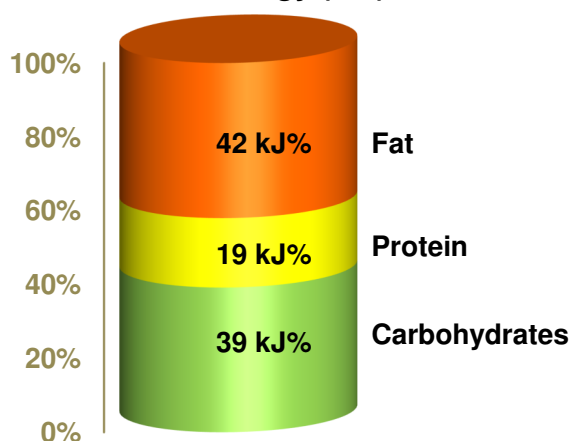
Gross Energy (GE)

21.3 MJ/kg

Metabolizable Energy (ME) ¹⁾

18.2 MJ/kg

¹⁾ = Physiological fuel value (Atwater); correspond to 4,355 kcal/kg



Crude Nutrients	[%]
Crude protein (N x 6.25)	21.2
Crude fat	20.1
Crude fibre	5.5
Crude ash	6.1
Starch	19.2
Sugar	14.0
N free extracts	42.2

Minerals	[%]	Amino acids	[%]	Vitamins	per kg
Calcium	1.12	Lysine	1.75	Vitamin A	15,000 IU
Phosphorus	0.75	Methionine	0.75	Vitamin D ₃	1,500 IU
Ca / P	1.49 : 1	Cystine	0.39	Vitamin E	150 mg
Sodium	0.20	Met+Cys	1.15	Vitamin K (as MNB)	20 mg
Magnesium	0.22	Threonine	0.93	Ascorbic acid	30 mg
Potassium	0.97	Tryptophan	0.28	Thiamine (B ₁)	26 mg
		Arginine	0.83	Riboflavin (B ₂)	16 mg
		Histidine	0.64	Pyridoxine (B ₆)	16
		Valine	1.47	Cobalamin (B ₁₂)	30 µg
		Isoleucine	1.19	Nicotinic acid	49 mg
		Leucine	2.10	Pantothenic acid	55 mg
		Phenylalanine	1.10	Folic acid	16 mg
		Phe+Tyr	2.22	Biotin	300 µg
		Glycine	0.42	Choline	920 mg
		Glutamic acid	4.76	Trace elements	per kg
		Aspartic acid	1.57	Iron	169 mg
		Proline	2.42	Manganese	98 mg
		Serine	1.27	Zinc	71 mg
		Alanine	0.64	Copper	12 mg
				Iodine	1.2 mg
				Selenium	0.2 mg
Cholesterol	12,500 mg/kg				

Main products

E15749-34 10 mm pellets
 E15749-347 10 mm pellets, γ-irradiated 25 kGy
 E15749-343 10 mm pellets | GREEN

Production and Sale

ssniff Spezialdiäten GmbH
 Phone: +49-(0)2921-9658-0
 Fax: +49-(0)2921-9658-40
 E-Mail mail@ssniff.de
www.ssniff.de / www.ssniff.com