

LF Control – 21 % protein, 11 kJ% fat

ssniff

Low fat control diet | 24 % casein, 4 % fat



Description

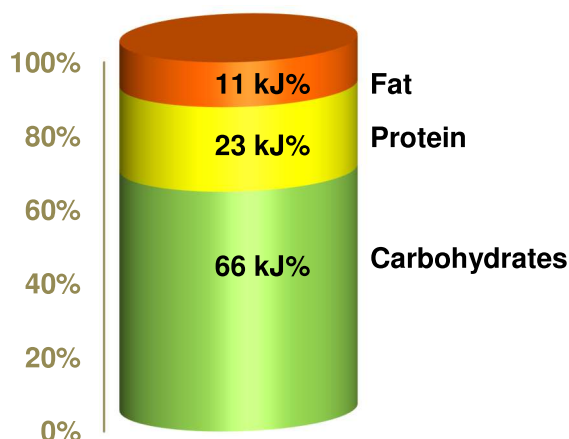
This traditional diet with high protein contents may serve as control diet for many ssniff HF diets. It is characterized by low sugar and fat contents (soybean oil).

The diet is intended for ad libitum feeding. The animals should have free access to fresh water.

Gross Energy (GE) 18.1 MJ/kg

Metabolizable Energy (ME) ¹⁾ 15.2 MJ/kg

¹⁾ = Physiological fuel value (Atwater); correspond to 3,630 kcal/kg



Crude Nutrients	[%]
Crude protein (N x 6.25)	21.1
Crude fat	4.2
Crude fibre	5.0
Crude ash	5.4
Starch	28.9
Dextrin	19.4
Sugar	11.0
N free extracts	60.4

Minerals	[%]	Amino acids	[%]	Vitamins	per kg
Calcium	0.92	Lysine	1.75	Vitamin A	15,000 IU
Phosphorus	0.65	Methionine	0.75	Vitamin D ₃	1,500 IU
Ca / P	1.41 : 1	Cystine	0.29	Vitamin E	150 mg
Sodium	0.20	Met+Cys	1.04	Vitamin K (as MNB)	20 mg
Magnesium	0.23	Threonine	0.93	Thiamine (B ₁)	26 mg
Potassium	0.97	Tryptophan	0.27	Riboflavin (B ₂)	16 mg
		Arginine	0.83	Pyridoxine (B ₆)	16 mg
Fatty acids	[%]	Histidine	0.64	Cobalamin (B ₁₂)	30 µg
C 12:0	—	Valine	1.47	Nicotinic acid	49 mg
C 14:0	0.02	Isoleucine	1.19	Pantothenic acid	55 mg
C 16:0	0.50	Leucine	2.10	Folic acid	16 mg
C 17:0	0.01	Phenylalanine	1.10	Biotin	300 µg
C 18:0	0.15	Phe+Tyr	2.22	Choline	920 mg
C 20:0	0.02	Glycine	0.42		
C 16:1	0.01	Glutamic acid	4.76	Trace elements	per kg
C 18:1	1.03	Aspartic acid	1.57	Iron	168 mg
C 18:2	2.11	Proline	2.43	Manganese	98 mg
C 18:3	0.23	Serine	1.27	Zinc	67 mg
		Alanine	0.64	Copper	14 mg
				Iodine	1.2 mg
				Selenium	0.2 mg

Main products

E15000-00	Meal / Powder
E15000-04	10 mm pellets
E15000-047	10 mm pellets, γ-irradiated 25 kGy

Production and Sale

ssniff Spezialdiäten GmbH
 Phone: +49-(0)2921-9658-0
 Fax: +49-(0)2921-9658-40
 E-Mail: mail@ssniff.de
www.ssniff.de / www.ssniff.com