

# LF Control, 13 kJ% fat

Low fat control diet | 20 % casein, 5 % fat

ssniff



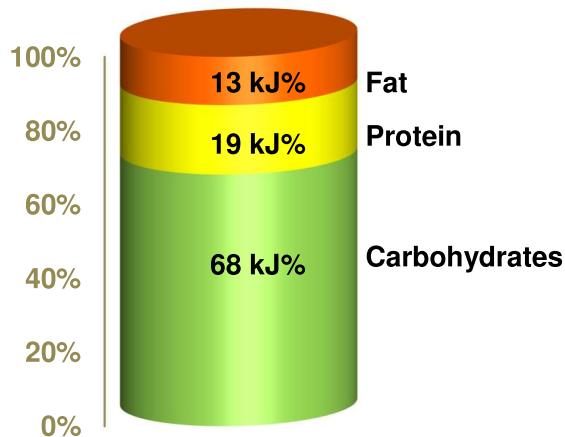
## Description

This diet may serve as control diet for many ssniff HF diets. It is characterized by low sugar and fat contents (soybean oil). An equivalent on soyprotein basis is available for milk protein allergen testing. Furthermore, the diet is free from chlorophyll (low fluorescence), and therefore suitable for in vivo imaging.

*The diet is intended for ad libitum feeding. The animals should have free access to fresh water.*

**Gross Energy (GE)** **18.1 MJ/kg**  
**Metabolizable Energy (ME) <sup>1)</sup>** **15.4 MJ/kg**

<sup>1)</sup> = Physiological fuel value (Atwater); correspond to 3,690 kcal/kg



Crude Nutrients	[%]
Crude protein (N x 6.25)	17.6
Crude fat	5.1
Crude fibre	5.0
Crude ash	5.4
Starch	36.2
Dextrin	14.9
Sugar	11.0
N free extracts	63.0

Minerals	[%]	Amino acids	[%]	Vitamins	per kg
Calcium	0.92	Lysine	1.47	Vitamin A	15,000 IU
Phosphorus	0.65	Methionine	0.65	Vitamin D <sub>3</sub>	1,500 IU
Ca / P	1.41 : 1	Cystine	0.27	Vitamin E	150 mg
Sodium	0.20	Met+Cys	0.92	Vitamin K (as MNB)	20 mg
Magnesium	0.23	Threonine	0.78	Thiamine (B <sub>1</sub> )	26 mg
Potassium	0.95	Tryptophan	0.23	Riboflavin (B <sub>2</sub> )	16 mg
		Arginine	0.69	Pyridoxine (B <sub>6</sub> )	16 mg
<b>Fatty acids</b>	<b>[%]</b>	Histidine	0.53	Cobalamin (B <sub>12</sub> )	30 µg
C 12:0	—	Valine	1.23	Nicotinic acid	49 mg
C 14:0	0.02	Isoleucine	1.00	Pantothenic acid	55 mg
C 16:0	0.61	Leucine	1.75	Folic acid	16 mg
C 17:0	0.01	Phenylalanine	0.92	Biotin	300 µg
C 18:0	0.19	Phe+Tyr	1.85	Choline	920 mg
C 20:0	0.02	Glycine	0.35		
C 16:1	0.01	Glutamic acid	3.97	<b>Trace elements</b>	<b>per kg</b>
C 18:1	1.27	Aspartic acid	1.31	Iron	168 mg
C 18:2	2.63	Proline	2.02	Manganese	98 mg
C 18:3	0.29	Serine	1.06	Zinc	66 mg
		Alanine	0.53	Copper	13 mg
				Iodine	1.2 mg
				Selenium	0.2 mg

## Main products

E15051-00 Meal / Powder  
 E15051-04 10 mm pellets  
 E15051-047 10 mm pellets, γ-irradiated 25 kGy

## Production and Sale

ssniff Spezialdiäten GmbH  
 Phone: +49-(0)2921-9658-0  
 Fax: +49-(0)2921-9658-40  
 E-Mail mail@ssniff.de  
[www.ssniff.de](http://www.ssniff.de) / [www.ssniff.com](http://www.ssniff.com)