

Guinea Pig maintenance

Complete feed for guinea pigs (GP)

ssniff



Description

This diet has been designed for the maintenance of guinea pigs. The protein content and the energy density are therefore lower than in the breeding diet to prevent obesity and oversupply in the adult GP.

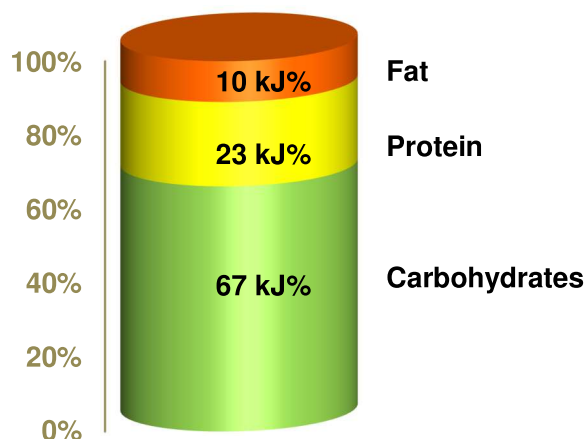
*The diet (together with hay products) is intended for ad libitum feeding.
The animals should have free access to fresh water.*

Gross Energy (GE) 16.0 MJ/kg

Metabolizable Energy (ME) ¹⁾ 12.1 MJ/kg

¹⁾ = Physiological fuel value (Atwater);
correspond to 2,900 kcal/kg

DE = 12.7 MJ/kg



Crude Nutrients	[%]
Crude protein (N x 6.25)	16.8
Crude fat	3.1
Crude fibre	13.0
NDF	27.8
ADF	15.3
Crude ash	7.2
Starch	23.1
Sugar	4.6
N free extracts	48.7

Minerals	[%]	Amino acids	[%]	Vitamins	per	kg
Calcium	1.10	Lysine	1.07	Vitamin A	25,000	IU
Phosphorus	0.62	Methionine	0.39	Vitamin D ₃	1,500	IU
Ca / P	1.77 : 1	Cystine	0.30	Vitamin E	140	mg
Sodium	0.20	Met+Cys	0.69	Vitamin K (as MNB)	20	mg
Magnesium	0.26	Threonine	0.63	Vitamin C (stabilized)	1,780	mg
Potassium	1.41	Tryptophan	0.21	Thiamine (B ₁)	85	mg
		Arginine	0.93	Riboflavin (B ₂)	35	mg
Fatty acids	[%]	Histidine	0.38	Pyridoxine (B ₆)	31	mg
C 12:0	—	Valine	0.83	Cobalamin (B ₁₂)	150	µg
C 14:0	0.01	Isoleucine	0.68	Nicotinic acid	155	mg
C 16:0	0.54	Leucine	1.20	Pantothenic acid	63	mg
C 18:0	0.09	Phenylalanine	0.74	Folic acid	10	mg
C 20:0	0.01	Phe+Tyr	1.20	Biotin	750	µg
C 16:1	0.02	Glycine	0.78	Choline	1,250	mg
C 18:1	0.52	Glutamic acid	3.05			
C 18:2	1.63	Aspartic acid	1.45	Trace elements	per	kg
C 18:3	0.30	Proline	1.12	Iron	278	mg
		Serine	0.76	Manganese	66	mg
		Alanine	0.83	Zinc	89	mg
				Copper	16	mg
				Iodine	2.1	mg
				Selenium	0.4	mg

Dietary composition

Alfalfa meal, wheat and wheat products, barley, soybean meal, sunflower meal, corn gluten feed, sugar beet pulp, minerals, vitamins & trace elements, soybean oil, stabilized vitamin C, L-lysine HCl, DL-methionine.

Main products

V2233-000 4 mm pellets

V2233-703 4 mm, γ-irradiated 25 kGy

Bag size

10 kg

10 kg + PE

Production and Sale

ssniff Spezialdiäten GmbH

Phone: +49-(0)2921-9658-0

Fax: +49-(0)2921-9658-40

E-Mail mail@ssniff.de

www.ssniff.de / www.ssniff.com