

Rabbit maintenance

ssniff

fortified (non-sterilized / autoclavable / γ -irradiated)

Complete feed for rabbits



Description

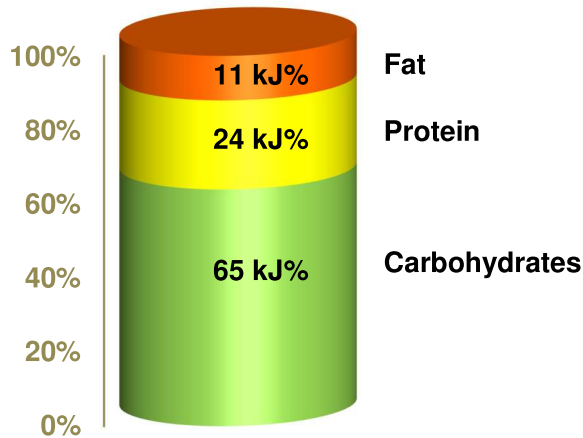
This diet has been designed for maintenance of rabbits. The diet is characterized by a higher crude fibre content resulting in a lower energy density. The crude fibre content will support the chewing activity and the physiological gut function.

*The diet (together with hay products) is intended for ad libitum feeding.
The animals should have free access to fresh water.*

Gross Energy (GE) 15.9 MJ/kg
Metabolizable Energy (ME) ¹⁾ 11.7 MJ/kg

¹⁾ = Physiological fuel value (Atwater); correspond to 2,790 kcal/kg

DE = 12.1 MJ/kg



Crude Nutrients	[%]
Crude protein (N x 6.25)	16.5
Crude fat	3.4
Crude fibre	15.5
NDF	31.1
ADF	17.9
Crude ash	7.4
Starch	16.8
Sugar	4.5
N free extracts	45.3

Minerals	[%]
Calcium	1.00
Phosphorus	0.60
Ca / P	1.67 : 1
Sodium	0.21
Magnesium	0.25
Potassium	1.68

Amino acids	[%]
Lysine	0.86
Methionine	0.36
Cystine	0.29
Met+Cys	0.65
Threonine	0.63
Tryptophan	0.20
Arginine	0.88
Histidine	0.38
Valine	0.81
Isoleucine	0.67
Leucine	1.18
Phenylalanine	0.71
Phe+Tyr	1.15
Glycine	0.74
Glutamic acid	2.75
Aspartic acid	1.43
Proline	1.04
Serine	0.73
Alanine	0.82

Vitamins	per	kg
Vitamin A	25,000	IU
Vitamin D ₃	1,500	IU
Vitamin E	135	mg
Vitamin K (as MNB)	20	mg
Thiamine (B ₁)	84	mg
Riboflavin (B ₂)	35	mg
Pyridoxine (B ₆)	30	mg
Cobalamin (B ₁₂)	150	µg
Nicotinic acid	145	mg
Pantothenic acid	62	mg
Folic acid	10	mg
Biotin	750	µg
Choline	1,280	mg

Fatty acids	[%]
C 12:0	—
C 14:0	0.01
C 16:0	0.56
C 18:0	0.10
C 20:0	0.01
C 16:1	0.02
C 18:1	0.57
C 18:2	1.67
C 18:3	0.32

Trace elements	per	kg
Iron	295	mg
Manganese	63	mg
Zinc	86	mg
Copper	16	mg
Iodine	2.1	mg
Selenium	0.4	mg

Dietary composition

Alfalfa meal, wheat and wheat products, barley, sunflower meal, corn gluten feed, soybean meal, oat bran, sugar beet pulp, molasses, minerals, vitamins & trace elements, soybean oil, L-lysine HCl, DL-methionine.

Main products

Product Code	Product Description	Bag size
V2333-000	4 mm pellets	10 kg
V2333-300	4 mm pellets, autoclavable	10 kg
V2333-703	4 mm, γ -irradiated 25 kGy	10 kg + PE

Production and Sale

ssniff Spezialdiäten GmbH
Phone: +49-(0)2921-9658-0
Fax: +49-(0)2921-9658-40
E-Mail: mail@ssniff.de
www.ssniff.de / www.ssniff.com

Rabbit maintenance Energy reduced

ssniff

fortified (non-sterilized / autoclavable / γ -irradiated)

Complete feed for rabbits

Description

This diet has been designed for maintenance of rabbits. The diet is characterized by very high fibre / low energy contents to prevent obesity in the long-term maintenance. The crude fibre content will support the chewing activity and the physiological gut function.

*The diet (together with hay products) is intended for ad libitum feeding.
The animals should have free access to fresh water.*

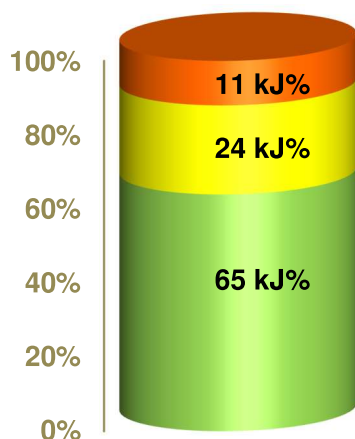


Gross Energy (GE) 15.8 MJ/kg

Metabolizable Energy (ME)¹⁾ 10.2 MJ/kg

¹⁾ = Physiological fuel value (Atwater);
correspond to 2,430 kcal/kg

DE = 10.9 MJ/kg



Crude Nutrients	[%]
Crude protein (N x 6.25)	15.0
Crude fat	2.9
Crude fibre	23.9
NDF	42.3
ADF	25.9
Crude ash	7.9
Starch	6.4
Sugar	4.5
N free extracts	39.4

Minerals	[%]	Amino acids	[%]	Vitamins	per	kg
Calcium	1.10	Lysine	0.70	Vitamin A	25,000	IU
Phosphorus	0.60	Methionine	0.32	Vitamin D ₃	1,500	IU
Ca / P	1.83 : 1	Cystine	0.24	Vitamin E	135	mg
Sodium	0.19	Met+Cys	0.56	Vitamin K (as MNB)	20	mg
Magnesium	0.29	Threonine	0.59	Thiamine (B ₁)	84	mg
Potassium	1.79	Tryptophan	0.20	Riboflavin (B ₂)	35	mg
		Arginine	0.90	Pyridoxine (B ₆)	30	mg
		Histidine	0.32	Cobalamin (B ₁₂)	150	μ g
		Valine	0.75	Nicotinic acid	145	mg
		Isoleucine	0.63	Pantothenic acid	62	mg
		Leucine	0.97	Folic acid	10	mg
		Phenylalanine	0.63	Biotin	750	μ g
		Phe+Tyr	1.01	Choline	1,280	mg
		Glycine	0.73			
		Glutamic acid	2.22	Trace elements	per	kg
		Aspartic acid	1.33	Iron	295	mg
		Proline	0.71	Manganese	63	mg
		Serine	0.65	Zinc	86	mg
		Alanine	0.70	Copper	16	mg
				Iodine	2.1	mg
				Selenium	0.4	mg

Dietary composition

Alfalfa meal, sunflower meal, oat bran, wheat feed, cellulose, sugar beet pulp, minerals, vitamins & trace elements, soybean oil, L-lysine HCl, DL-methionine.

Main products

V2373-000 4 mm pellets

V2373-703 4 mm, γ -irradiated 25 kGy

Bag size

10 kg

10 kg + PE

Production and Sale

ssniff Spezialdiäten GmbH

Phone: +49-(0)2921-9658-0

Fax: +49-(0)2921-9658-40

E-Mail mail@ssniff.de

www.ssniff.de / www.ssniff.com