

Rat/Mouse – Maintenance

fortified (autoclavable / γ -irradiated)

Complete feed for rats & mice

ssniff



Description

This diet has been designed for rats and mice and is suitable for long term experiments (e.g. chronic toxicity studies), because of the moderate energy density and the very low nitrosamine contents. The diet is vitamin and amino acid fortified to compensate for the nutrient losses during the sterilization process.

The diet is intended for ad libitum feeding. The animals should have free access to fresh water

Gross Energy (GE)

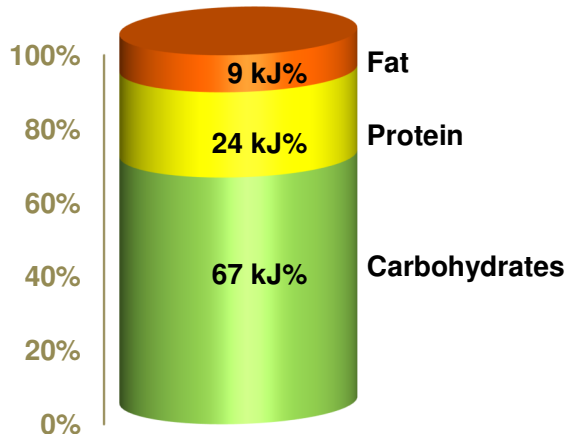
16.2 MJ/kg

Metabolizable Energy (ME)¹⁾

13.5 MJ/kg

¹⁾ = Physiological fuel value (Atwater); correspond to 3,230 kcal/kg

ME - pig = 12.7 MJ/kg (old: 12.8 MJ/kg)



Crude Nutrients

Crude Nutrients	[%]
Crude protein (N x 6.25)	19.0
Crude fat	3.3
Crude fibre	4.9
NDF	17.2
ADF	7.1
Crude ash	6.4
Starch	35.2
Sugar	5.3
N free extracts	54.2

Minerals

Minerals	[%]
Calcium	1.00
Phosphorus	0.70
Ca / P	1.43 : 1
Sodium	0.24
Magnesium	0.22
Potassium	0.92

Fatty acids

Fatty acids	[%]
C 12:0	—
C 14:0	0.01
C 16:0	0.45
C 18:0	0.09
C 20:0	0.01
C 16:1	0.01
C 18:1	0.62
C 18:2	1.76
C 18:3	0.23

Amino acids

Amino acids	[%]
Lysine	1.10
Methionine	0.38
Cystine	0.35
Met+Cys	0.73
Threonine	0.72
Tryptophan	0.25
Arginine	1.19
Histidine	0.49
Valine	0.92
Isoleucine	0.79
Leucine	1.39
Phenylalanine	0.89
Phe+Tyr	1.50
Glycine	0.89
Glutamic acid	4.22
Aspartic acid	1.84
Proline	1.31
Serine	1.01
Alanine	0.87

Vitamins

Vitamins	per kg
Vitamin A	25,000 IU
Vitamin D ₃	1,500 IU
Vitamin E	135 mg
Vitamin K (as MNB)	20 mg
Thiamine (B ₁)	86 mg
Riboflavin (B ₂)	32 mg
Pyridoxine (B ₆)	31 mg
Cobalamin (B ₁₂)	150 µg
Nicotinic acid	153 mg
Pantothenic acid	59 mg
Folic acid	10 mg
Biotin	710 µg
Choline	1,370 mg

Trace elements

Trace elements	per kg
Iron	186 mg
Manganese	68 mg
Zinc	91 mg
Copper	15 mg
Iodine	2.1 mg
Selenium	0.3 mg

Dietary composition

Wheat and wheat products, soybean products, barley, minerals, oat hulls, sugar beet pulp, vitamins & trace elements, L-lysine HCl, DL-methionine.

Main products

Main products	Bag size
V1534-300 10 mm pellets, autoclavable	10 kg
V1534-703 10 mm, γ -irradiated 25 kGy	10 kg + PE
V1534-727 10 mm, γ -irradiated 25 kGy	5 x 3 kg Vacubag

Production and Sale

ssniff Spezialdiäten GmbH
 Phone: +49-(0)2921-9658-0
 Fax: +49-(0)2921-9658-40
 E-Mail: mail@ssniff.de
www.ssniff.de / www.ssniff.com

Nude mouse

fortified (autoclavable / γ -irradiated)

Complete feed for mice with high nutrient & energy requirements

ssniff



Description

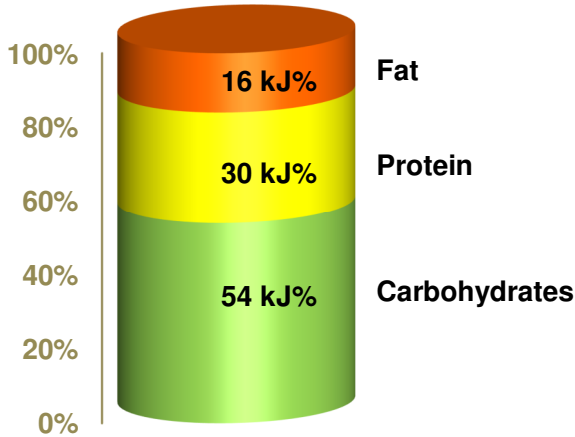
This diet has been designed for transgenic / nude mice (maintenance & breeding). The nutrient concentrations (protein, lipids, fatty acids), the protein quality (amino acid composition) and the energy density are increased to meet the potential higher requirements of these mice.

The diet is intended for ad libitum feeding. The animals should have free access to fresh water

Gross Energy (GE) 17.3 MJ/kg
Metabolizable Energy (ME)¹⁾ 14.4 MJ/kg

¹⁾ = Physiological fuel value (Atwater); correspond to 3,440 kcal/kg

ME - pig = 14.1 MJ/kg (old: 14.2 MJ/kg)



Crude Nutrients	[%]
Crude protein (N x 6.25)	26.0
Crude fat	6.0
Crude fibre	3.6
NDF	11.8
ADF	5.4
Crude ash	6.7
Starch	25.4
Sugar	9.0
N free extracts	46.9

Minerals	[%]	Amino acids	[%]	Vitamins	per	kg
Calcium	1.00	Lysine	1.52	Vitamin A	25,000	IU
Phosphorus	0.70	Methionine	0.49	Vitamin D ₃	1,500	IU
Ca / P	1.43 : 1	Cystine	0.44	Vitamin E	135	mg
Sodium	0.27	Met+Cys	0.93	Vitamin K (as MNB)	20	mg
Magnesium	0.22	Threonine	0.99	Thiamine (B ₁)	86	mg
Potassium	1.20	Tryptophan	0.33	Riboflavin (B ₂)	34	mg
		Arginine	1.67	Pyridoxine (B ₆)	32	mg
		Histidine	0.67	Cobalamin (B ₁₂)	150	μ g
		Valine	1.29	Nicotinic acid	145	mg
		Isoleucine	1.18	Pantothenic acid	62	mg
		Leucine	2.16	Folic acid	10	mg
		Phenylalanine	1.30	Biotin	730	μ g
		Phe+Tyr	2.19	Choline	1,330	mg
		Glycine	1.19			
		Glutamic acid	5.50	Trace elements	per	kg
		Aspartic acid	2.80	Iron	198	mg
		Proline	1.72	Manganese	61	mg
		Serine	1.44	Zinc	89	mg
		Alanine	1.25	Copper	16	mg
				Iodine	2.1	mg
				Selenium	0.3	mg

Dietary composition

Wheat and wheat products, soybean products, whey powder, corn gluten, minerals, soybean oil, brewer's yeast, vitamins & trace elements, L-lysine HCl, DL-methionine.

Main products

Product Code	Product Description	Bag size
V1244-000	10 mm pellets	10 kg
V1244-300	10 mm, autoclavable	10 kg
V1244-703	10 mm, γ -irradiated 25 kGy	10 kg + PE
V1244-727	10 mm, γ -irradiated 25 kGy	5 x 3 kg Vacubag

Production and Sale

ssniff Spezialdiäten GmbH
 Phone: +49-(0)2921-9658-0
 Fax: +49-(0)2921-9658-40
 E-Mail: mail@ssniff.de
www.ssniff.de / www.ssniff.com

Rat/Mouse – Low phytoestrogen

fortified (non-sterilized / autoclavable / γ -irradiated)

Complete feed for rats & mice (maintenance) without soybean & alfalfa products

ssniff



Description

This maintenance diet for rats and mice contains not any soybean or alfalfa product and contains accordingly only traces of the phytoestrogens genistein, daidzein and coumestrol. This diet is therefore suitable to study the effects of estrogens and similar substances (endogen disrupters).

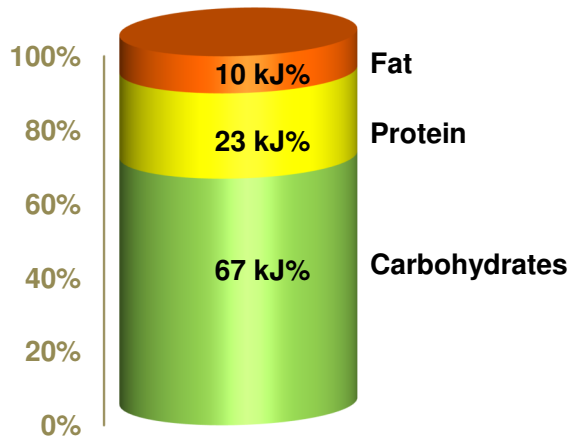
The diet is intended for ad libitum feeding. The animals should have free access to fresh water.

Gross Energy (GE) 16.4 MJ/kg

Metabolizable Energy (ME)¹⁾ 13.7 MJ/kg

¹⁾ = Physiological fuel value (Atwater); correspond to 3,275 kcal/kg

ME - pig = 13.0 MJ/kg (old: 12.7 MJ/kg)



Crude Nutrients	[%]
Crude protein (N x 6.25)	19.1
Crude fat	3.4
Crude fibre	4.6
NDF	20.6
ADF	6.5
Crude ash	6.0
Starch	34.5
Sugar	3.3
N free extracts	55.1

Minerals	[%]
Calcium	1.00
Phosphorus	0.70
Ca / P	1.43 : 1
Sodium	0.23
Magnesium	0.22
Potassium	0.73

Fatty acids	[%]
C 12:0	—
C 14:0	0.01
C 16:0	0.45
C 18:0	0.07
C 20:0	0.01
C 16:1	0.01
C 18:1	0.62
C 18:2	1.85
C 18:3	0.22

Amino acids	[%]
Lysine	1.04
Methionine	0.37
Cystine	0.37
Met+Cys	0.74
Threonine	0.81
Tryptophan	0.24
Arginine	1.01
Histidine	0.46
Valine	1.04
Isoleucine	0.84
Leucine	1.64
Phenylalanine	1.00
Phe+Tyr	1.80
Glycine	0.91
Glutamic acid	3.68
Aspartic acid	1.74
Proline	1.42
Serine	0.99
Alanine	1.10

Vitamins	per	kg
Vitamin A	25,000	IU
Vitamin D ₃	1,500	IU
Vitamin E	135	mg
Vitamin K (as MNB)	20	mg
Thiamine (B ₁)	86	mg
Riboflavin (B ₂)	31	mg
Pyridoxine (B ₆)	30	mg
Cobalamin (B ₁₂)	150	µg
Nicotinic acid	149	mg
Pantothenic acid	57	mg
Folic acid	9	mg
Biotin	660	µg
Choline	1,370	mg

Trace elements	per	kg
Iron	184	mg
Manganese	75	mg
Zinc	98	mg
Copper	14	mg
Iodine	2.1	mg
Selenium	0.4	mg

Dietary composition

Wheat and wheat products, barley, corn gluten, potato protein, minerals, oat hulls, vitamins & trace elements, vegetable oil, L-lysine HCl, DL-methionine.

Main products

Product Code	Product Description	Bag size
V1554-000	10 mm pellets	10 kg
V1554-300	10 mm, autoclavable	10 kg (standard)
V1554-330	10 mm, autoclavable	5 kg
V1554-703	10 mm, γ -irradiated 25 kGy	10 kg + PE

Production and Sale

ssniff Spezialdiäten GmbH
 Phone: +49-(0)2921-9658-0
 Fax: +49-(0)2921-9658-40
 E-Mail: mail@ssniff.de
www.ssniff.de / www.ssniff.com

Rat/Mouse - maintenance Energy reduced

ssniff

fortified (non-sterilized / autoclavable / γ -irradiated)

Complete feed for rats & mice



Description

This diet has been designed for long-term maintenance of rats and mice (e.g. ageing studies). It is characterized by a very low energy density and high fibre contents. The diet is vitamin and amino acid fortified to compensate for the nutrient losses during the sterilization process.

The diet is intended for ad libitum feeding. The animals should have free access to fresh water

Gross Energy (GE)

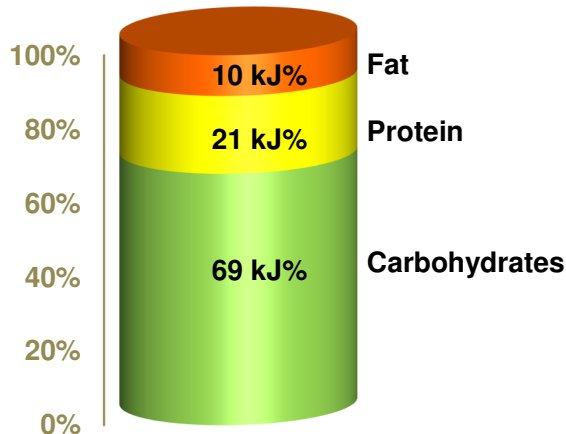
15.7 MJ/kg

Metabolizable Energy (ME)¹⁾

11.7 MJ/kg

¹⁾ = Physiological fuel value (Atwater); correspond to 2,800 kcal/kg

ME - pig = 8.7 MJ/kg (old: 9.0 MJ/kg)



Crude Nutrients	[%]
Crude protein (N x 6.25)	15.0
Crude fat	3.1
Crude fibre	14.2
NDF	29.3
ADF	16.1
Crude ash	7.8
Starch	20.8
Sugar	5.4
N free extracts	48.8

Minerals	[%]
Calcium	1.10
Phosphorus	0.70
Ca / P	1.57 : 1
Sodium	0.25
Magnesium	0.23
Potassium	1.47

Amino acids	[%]
Lysine	0.84
Methionine	0.36
Cystine	0.27
Met+Cys	0.63
Threonine	0.58
Tryptophan	0.19
Arginine	0.77
Histidine	0.34
Valine	0.75
Isoleucine	0.60
Leucine	1.17
Phenylalanine	0.68
Phe+Tyr	1.11
Glycine	0.69
Glutamic acid	2.67
Aspartic acid	1.24
Proline	1.06
Serine	0.68
Alanine	0.78

Vitamins	per	kg
Vitamin A	25,000	IU
Vitamin D ₃	1,500	IU
Vitamin E	135	mg
Vitamin K (as MNB)	80	mg
Thiamine (B ₁)	85	mg
Riboflavin (B ₂)	35	mg
Pyridoxine (B ₆)	31	mg
Cobalamin (B ₁₂)	150	µg
Nicotinic acid	155	mg
Pantothenic acid	62	mg
Folic acid	11	mg
Biotin	860	µg
Choline	1,290	mg

Fatty acids	[%]
C 12:0	—
C 14:0	0.02
C 16:0	0.53
C 18:0	0.08
C 20:0	0.01
C 16:1	0.02
C 18:1	0.43
C 18:2	1.44
C 18:3	0.28

Trace elements	per	kg
Iron	276	mg
Manganese	63	mg
Zinc	84	mg
Copper	15	mg
Iodine	2.1	mg
Selenium	0.4	mg

Dietary composition

Alfalfa meal, wheat and wheat products, barley, corn gluten, sunflower seeds, oat bran, soybeans - toasted, sugar beet pulp, molasses, minerals, vitamins & trace elements, L-lysine HCl, DL-methionine.

Main products

Product Code	Product Description	Bag size
V1574-000	10 mm pellets	10 kg
V1574-300	10 mm pellets, autoclavable	10 kg
V1574-703	10 mm, γ -irradiated 25 kGy	10 kg + PE

Production and Sale

ssniff Spezialdiäten GmbH
 Phone: +49-(0)2921-9658-0
 Fax: +49-(0)2921-9658-40
 E-Mail: mail@ssniff.de
www.ssniff.de / www.ssniff.com

Rat/Mouse – Maintenance extrudate

ssniff

Complete feed for rats & mice – fortified

Description

This diet has been designed for rats and mice and is suitable for long term experiments (e.g. chronic toxicity studies), because of the moderate energy density and the very low nitrosamine contents. Moreover, the diet is highly digestible and palatable due to the extrusion process.

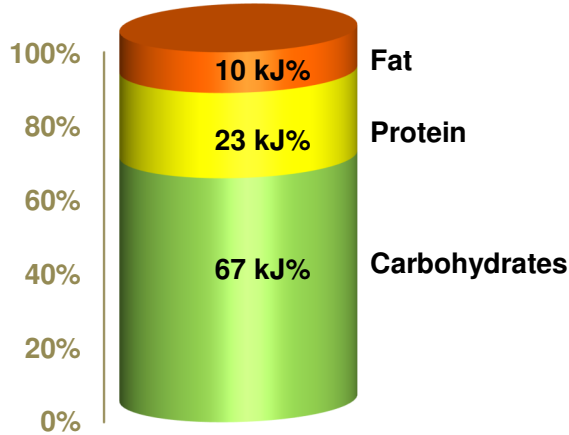
The diet is intended for ad libitum feeding. The animals should have free access to fresh water



Gross Energy (GE) 16.6 MJ/kg
Metabolizable Energy (ME) ¹⁾ 13.9 MJ/kg

¹⁾ = Physiological fuel value (Atwater); correspond to 3,350 kcal/kg

ME - pig = 13.1 MJ/kg (old: 13.0 MJ/kg)



Crude Nutrients	[%]
Crude protein (N x 6.25)	19.1
Crude fat	3.6
Crude fibre	5.1
NDF	15.7
ADF	7.3
Crude ash	6.5
Starch	35.3
Sugar	4.8
N free extracts	55.9

Minerals	[%]	Amino acids	[%]	Vitamins	per kg
Calcium	1.00	Lysine	1.15	Vitamin A	25,000 IU
Phosphorus	0.70	Methionine	0.38	Vitamin D ₃	1,500 IU
Ca / P	1.43 : 1	Cystine	0.35	Vitamin E	135 mg
Sodium	0.24	Met+Cys	0.73	Vitamin K (as MNB)	20 mg
Magnesium	0.21	Threonine	0.67	Thiamine (B ₁)	85 mg
Potassium	0.92	Tryptophan	0.22	Riboflavin (B ₂)	33 mg
Fatty acids	[%]	Arginine	1.13	Pyridoxine (B ₆)	30 mg
C 12:0	—	Histidine	0.48	Cobalamin (B ₁₂)	150 µg
C 14:0	0.01	Valine	0.90	Nicotinic acid	139 mg
C 16:0	0.48	Isoleucine	0.76	Pantothenic acid	58 mg
C 18:0	0.08	Leucine	1.44	Folic acid	10 mg
C 20:0	0.01	Phenylalanine	0.88	Biotin	650 µg
C 16:1	0.01	Phe+Tyr	1.51	Choline	1,490 mg
C 18:1	0.75	Glycine	0.86	Trace elements	per kg
C 18:2	1.88	Glutamic acid	3.92	Iron	196 mg
C 18:3	0.22	Aspartic acid	1.69	Manganese	62 mg
		Proline	1.30	Zinc	89 mg
		Serine	0.93	Copper	15 mg
		Alanine	0.86	Iodine	2.1 mg
				Selenium	0.3 mg

Dietary composition

Wheat & wheat products, corn (maize) & corn products, soybean products, oat bran & middlings, sugar beet pulp, minerals, vitamins & trace elements, soybean oil, L-lysine HCl, DL-methionine.

Main products	Bag size
V1536-000 Extrudate (app. Ø 16 mm)	10 kg PE
V1536-037 Extrudate (app. Ø 16 mm)	5 kg Alubag
V1537-000 Ground extrudate (powder)	10 kg PE

Production and Sale

ssniff Spezialdiäten GmbH
 Phone: +49-(0)2921-9658-0
 Fax: +49-(0)2921-9658-40
 E-Mail: mail@ssniff.de
www.ssniff.de / www.ssniff.com

Nude mouse extrudate

ssniff

Complete feed (fortified) for mice with high nutrient & energy requirements



Description

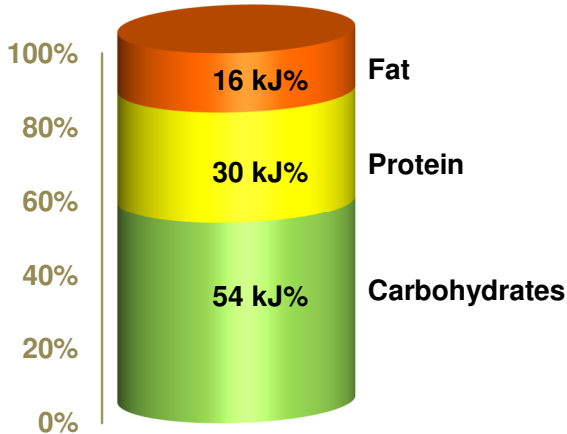
This diet has been designed for nude mice (maintenance & breeding). The nutrient concentrations (protein, lipids, fatty acids), the protein quality (amino acid composition) and the energy density are increased to meet the potential higher requirements of these mice. Furthermore, the digestibility and palatability is improved by the extrusion process.

The diet is intended for ad libitum feeding. The animals should have free access to fresh water

Gross Energy (GE) 17.6 MJ/kg
Metabolizable Energy (ME) ¹⁾ 14.6 MJ/kg

¹⁾ = Physiological fuel value (Atwater); correspond to 3,500 kcal/kg

ME - pig = 14.3 MJ/kg (old: 14.3 MJ/kg)



Crude Nutrients	[%]
Crude protein (N x 6.25)	26.5
Crude fat	6.2
Crude fibre	3.8
NDF	10.3
ADF	4.7
Crude ash	6.9
Starch	24.6
Sugar	8.2
N free extracts	47.6

Minerals	[%]
Calcium	1.00
Phosphorus	0.70
Ca / P	1.43 : 1
Sodium	0.28
Magnesium	0.22
Potassium	1.10

Amino acids	[%]
Lysine	1.51
Methionine	0.47
Cystine	0.46
Met+Cys	0.93
Threonine	0.99
Tryptophan	0.32
Arginine	1.67
Histidine	0.67
Valine	1.27
Isoleucine	1.12
Leucine	2.05
Phenylalanine	1.27
Phe+Tyr	2.21
Glycine	1.20
Glutamic acid	5.38
Aspartic acid	2.70
Proline	1.70
Serine	1.34
Alanine	1.20

Vitamins	per	kg
Vitamin A	25,000	IU
Vitamin D ₃	1,500	IU
Vitamin E	135	mg
Vitamin K (as MNB)	20	mg
Thiamine (B ₁)	86	mg
Riboflavin (B ₂)	34	mg
Pyridoxine (B ₆)	31	mg
Cobalamin (B ₁₂)	150	µg
Nicotinic acid	132	mg
Pantothenic acid	62	mg
Folic acid	10	mg
Biotin	690	µg
Choline	1,600	mg

Fatty acids	[%]
C 12:0	—
C 14:0	0.02
C 16:0	0.74
C 18:0	0.20
C 20:0	0.02
C 16:1	0.03
C 18:1	1.40
C 18:2	3.27
C 18:3	0.38

Trace elements	per	kg
Iron	198	mg
Manganese	61	mg
Zinc	87	mg
Copper	16	mg
Iodine	2.1	mg
Selenium	0.3	mg

Dietary composition

Soybean products, corn (maize) & corn products, wheat, whey powder, wheat gluten (vital), minerals, soybean oil, brewer's yeast, vitamins & trace elements, L-lysine HCl, DL-methionine.

Main products

Product Code	Description	Bag size
V1246-000	Extrudate (app. Ø 16 mm)	10 kg PE
V1246-703	Extrudate, γ-irradiated 25 kGy	10 kg PE + PE
V1246-733	Extrudate, γ-irradiated 25 kGy	5 kg PE + PE

Production and Sale

ssniff Spezialdiäten GmbH
 Phone: +49-(0)2921-9658-0
 Fax: +49-(0)2921-9658-40
 E-Mail mail@ssniff.de
www.ssniff.de / www.ssniff.com