

Guinea Pig breeding

Complete feed for guinea pigs (GP)

ssniff



Description

This diet has been designed for breeding of guinea pigs. The protein content and quality as well as the energy density are adjusted to the high requirements during this stage of life.

*The diet (together with hay products) is intended for ad libitum feeding.
The animals should have free access to fresh water.*

Gross Energy (GE)

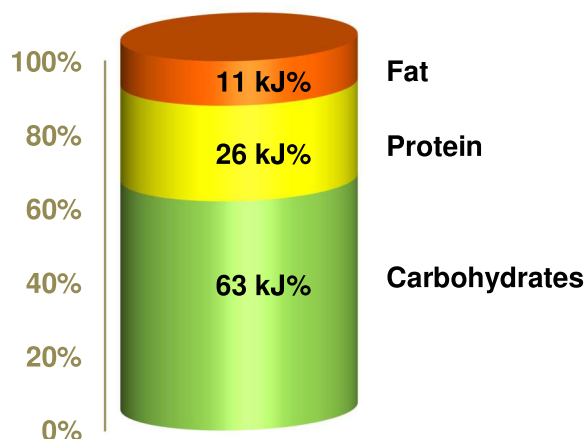
16.3 MJ/kg

Metabolizable Energy (ME)¹⁾

12.3 MJ/kg

¹⁾ = Physiological fuel value (Atwater);
correspond to 2,945 kcal/kg

DE = 12.9 MJ/kg



Crude Nutrients	[%]
Crude protein (N x 6.25)	19.0
Crude fat	3.5
Crude fibre	12.0
NDF	25.9
ADF	14.4
Crude ash	7.2
Starch	21.9
Sugar	4.3
N free extracts	49.2

Minerals	[%]
Calcium	1.10
Phosphorus	0.63
Ca / P	1.74 : 1
Sodium	0.20
Magnesium	0.25
Potassium	1.69

Amino acids	[%]
Lysine	1.09
Methionine	0.41
Cystine	0.33
Met+Cys	0.74
Threonine	0.74
Tryptophan	0.25
Arginine	1.12
Histidine	0.44
Valine	0.94
Isoleucine	0.80
Leucine	1.38
Phenylalanine	0.87
Phe+Tyr	1.42
Glycine	0.83
Glutamic acid	3.40
Aspartic acid	1.76
Proline	1.21
Serine	0.88
Alanine	0.91

Vitamins	per	kg
Vitamin A	25,000	IU
Vitamin D ₃	1,500	IU
Vitamin E	140	mg
Vitamin K (as MNB)	20	mg
Vitamin C (stabilized)	1,800	mg
Thiamine (B ₁)	85	mg
Riboflavin (B ₂)	34	mg
Pyridoxine (B ₆)	31	mg
Cobalamin (B ₁₂)	150	µg
Nicotinic acid	148	mg
Pantothenic acid	62	mg
Folic acid	10	mg
Biotin	750	µg
Choline	1,250	mg

Fatty acids	[%]
C 12:0	—
C 14:0	0.01
C 16:0	0.60
C 18:0	0.11
C 20:0	0.01
C 16:1	0.02
C 18:1	0.60
C 18:2	1.80
C 18:3	0.34

Trace elements	per	kg
Iron	276	mg
Manganese	65	mg
Zinc	89	mg
Copper	17	mg
Iodine	2.1	mg
Selenium	0.4	mg

Dietary composition

Alfalfa meal, wheat and wheat products, barley, soybean meal, sunflower meal, corn gluten feed, sugar beet pulp, minerals, vitamins & trace elements, soybean oil, stabilized vitamin C, L-lysine HCl, DL-methionine.

Main products

V2223-000	4 mm pellets
V2223-703	4 mm, γ-irradiated 25 kGy

Bag size

10 kg
10 kg + PE

Production and Sale

ssniff Spezialdiäten GmbH
Phone: +49-(0)2921-9658-0
Fax: +49-(0)2921-9658-40
E-Mail mail@ssniff.de
www.ssniff.de / www.ssniff.com