

Rabbit breeding

ssniff

fortified (non-sterilized / autoclavable / γ -irradiated)

Complete feed for rabbits

Description

This diet has been designed for breeding of rabbits. The protein content and energy density are adjusted to the high requirements during this stage of life. The fibre content and the portion of effective (chewable) fibre will support the physiological gut function.

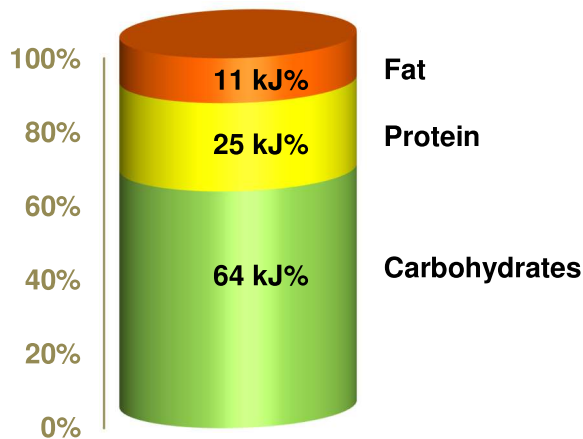
*The diet is intended for ad libitum feeding together with hay products.
The animals should have free access to fresh water.*



Gross Energy (GE) 16.1 MJ/kg
Metabolizable Energy (ME) ¹⁾ 12.0 MJ/kg

¹⁾ = Physiological fuel value (Atwater);
correspond to 2,875 kcal/kg

DE = 12.4 MJ/kg



Crude Nutrients	[%]
Crude protein (N x 6.25)	18.0
Crude fat	3.5
Crude fibre	14.0
NDF	28.1
ADF	16.1
Crude ash	7.2
Starch	19.6
Sugar	4.8
N free extracts	46.0

Minerals	[%]
Calcium	1.10
Phosphorus	0.60
Ca / P	1.83 : 1
Sodium	0.20
Magnesium	0.25
Potassium	1.65

Amino acids	[%]
Lysine	1.10
Methionine	0.42
Cystine	0.31
Met+Cys	0.73
Threonine	0.70
Tryptophan	0.23
Arginine	0.99
Histidine	0.42
Valine	0.89
Isoleucine	0.73
Leucine	1.30
Phenylalanine	0.81
Phe+Tyr	1.31
Glycine	0.82
Glutamic acid	3.18
Aspartic acid	1.68
Proline	1.18
Serine	0.85
Alanine	0.89

Vitamins	per	kg
Vitamin A	25,000	IU
Vitamin D ₃	1,500	IU
Vitamin E	135	mg
Vitamin K (as MNB)	20	mg
Thiamine (B ₁)	85	mg
Riboflavin (B ₂)	35	mg
Pyridoxine (B ₆)	30	mg
Cobalamin (B ₁₂)	150	μ g
Nicotinic acid	145	mg
Pantothenic acid	63	mg
Folic acid	10	mg
Biotin	750	μ g
Choline	1,280	mg

Fatty acids	[%]
C 12:0	—
C 14:0	0.01
C 16:0	0.59
C 18:0	0.11
C 20:0	0.01
C 16:1	0.02
C 18:1	0.62
C 18:2	1.77
C 18:3	0.33

Trace elements	per	kg
Iron	295	mg
Manganese	63	mg
Zinc	87	mg
Copper	16	mg
Iodine	2.1	mg
Selenium	0.4	mg

Dietary composition

Alfalfa meal, wheat and wheat products, barley, soybean products, corn gluten feed, sunflower seeds, sugar beet pulp, minerals, vitamins & trace elements, L-lysine HCl, DL-methionine.

Main products

Product Code	Description	Bag size
V2323-000	4 mm pellets	10 kg
V2323-300	4 mm pellets, autoclavable	10 kg
V2323-703	4 mm, γ -irradiated 25 kGy	10 kg + PE

Production and Sale

ssniff Spezialdiäten GmbH
Phone: +49-(0)2921-9658-0
Fax: +49-(0)2921-9658-40
E-Mail: mail@ssniff.de
www.ssniff.de / www.ssniff.com