

# Mouse - Breeding

fortified (autoclavable /  $\gamma$ -irradiated)

Complete feed for mice (& rats)

ssniff



## Description

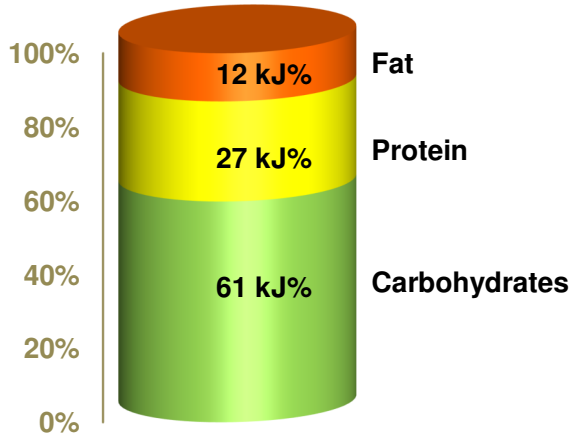
This diet has been designed for breeding of mice; it can also be used for rats. The dietary nutrient contents and the energy density are adjusted to the high performance during reproduction to meet the increased nutrient requirements. The diet is fortified for sterilization processes.

*The diet is intended for ad libitum feeding. The animals should have free access to fresh water*

**Gross Energy (GE)** 16.7 MJ/kg  
**Metabolizable Energy (ME)** <sup>1)</sup> 14.0 MJ/kg

<sup>1)</sup> = Physiological fuel value (Atwater); correspond to 3,338 kcal/kg

ME - pig = 13.6 MJ/kg (old: 13.6 MJ/kg)



Crude Nutrients	[%]
Crude protein (N x 6.25)	22.0
Crude fat	4.5
Crude fibre	3.9
NDF	13.1
ADF	6.0
Crude ash	6.5
Starch	34.2
Sugar	5.1
N free extracts	51.2

Minerals	[%]
Calcium	1.00
Phosphorus	0.70
Ca / P	1.43 : 1
Sodium	0.24
Magnesium	0.21
Potassium	0.98

Amino acids	[%]
Lysine	1.48
Methionine	0.50
Cystine	0.39
Met+Cys	0.89
Threonine	0.83
Tryptophan	0.28
Arginine	1.38
Histidine	0.57
Valine	1.06
Isoleucine	0.95
Leucine	1.67
Phenylalanine	1.04
Phe+Tyr	1.77
Glycine	0.98
Glutamic acid	4.56
Aspartic acid	2.20
Proline	1.38
Serine	1.17
Alanine	1.01

Vitamins	per	kg
Vitamin A	25,000	IU
Vitamin D <sub>3</sub>	1,500	IU
Vitamin E	135	mg
Vitamin K (as MNB)	20	mg
Thiamine (B <sub>1</sub> )	86	mg
Riboflavin (B <sub>2</sub> )	33	mg
Pyridoxine (B <sub>6</sub> )	31	mg
Cobalamin (B <sub>12</sub> )	150	$\mu$ g
Nicotinic acid	140	mg
Pantothenic acid	59	mg
Folic acid	10	mg
Biotin	690	$\mu$ g
Choline	1,400	mg

Fatty acids	[%]
C 12:0	—
C 14:0	0.01
C 16:0	0.54
C 18:0	0.14
C 20:0	0.02
C 16:1	0.02
C 18:1	1.03
C 18:2	2.42
C 18:3	0.28

Trace elements	per	kg
Iron	192	mg
Manganese	64	mg
Zinc	91	mg
Copper	15	mg
Iodine	2.1	mg
Selenium	0.3	mg

## Dietary composition

Wheat and wheat products, soybean products, corn (maize), minerals, soybean oil, brewer's yeast, vitamins & trace elements, L-lysine HCl, DL-methionine.

## Main products

Product Code	Product Description	Bag size
V1124-300	10 mm, autoclavable	10 kg
V1124-703	10 mm, $\gamma$ -irradiated 25 kGy	10 kg + PE
V1124-727	10 mm, $\gamma$ -irradiated 25 kGy	5 x 3 kg Vacubag

## Production and Sale

ssniff Spezialdiäten GmbH  
 Phone: +49-(0)2921-9658-0  
 Fax: +49-(0)2921-9658-40  
 E-Mail: mail@ssniff.de  
[www.ssniff.de](http://www.ssniff.de) / [www.ssniff.com](http://www.ssniff.com)

# VRF1 - Breeding

fortified (autoclavable /  $\gamma$ -irradiated)

Complete feed for mice & rats

ssniff



## Description

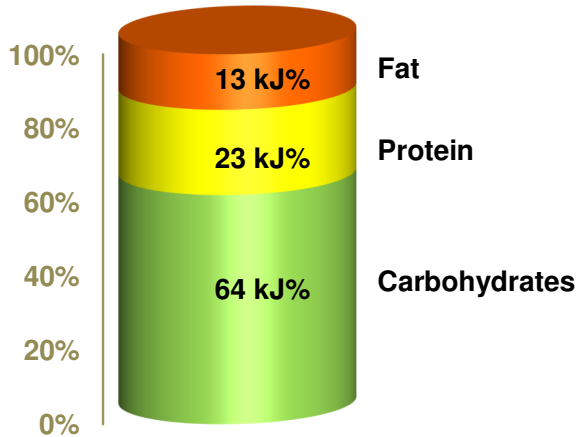
This diet has been designed for the breeding of rats and mice. The dietary nutrient contents and the energy density are adjusted to the high performance during reproduction to meet the increased nutrient requirements. The diet is fortified for sterilization processes.

*The diet is intended for ad libitum feeding. The animals should have free access to fresh water*

**Gross Energy (GE)** 16.6 MJ/kg  
**Metabolizable Energy (ME)** <sup>1)</sup> 14.0 MJ/kg

<sup>1)</sup> = Physiological fuel value (Atwater); correspond to 3,345 kcal/kg

ME - pig = 13.2 MJ/kg (old: 13.3 MJ/kg)



Crude Nutrients	[%]
Crude protein (N x 6.25)	19.0
Crude fat	5.0
Crude fibre	4.5
NDF	16.3
ADF	6.9
Crude ash	6.3
Starch	34.8
Sugar	5.6
N free extracts	53.9

Minerals	[%]	Amino acids	[%]	Vitamins	per	kg
Calcium	0.90	Lysine	1.42	Vitamin A	25,000	IU
Phosphorus	0.65	Methionine	0.67	Vitamin D <sub>3</sub>	1,500	IU
Ca / P	1.38 : 1	Cystine	0.34	Vitamin E	135	mg
Sodium	0.30	Met+Cys	1.01	Vitamin K (as MNB)	20	mg
Magnesium	0.27	Threonine	0.70	Thiamine (B <sub>1</sub> )	87	mg
Potassium	0.95	Tryptophan	0.24	Riboflavin (B <sub>2</sub> )	33	mg
		Arginine	1.16	Pyridoxine (B <sub>6</sub> )	31	mg
		Histidine	0.48	Cobalamin (B <sub>12</sub> )	150	$\mu$ g
		Valine	0.91	Nicotinic acid	145	mg
		Isoleucine	0.79	Pantothenic acid	59	mg
		Leucine	1.41	Folic acid	10	mg
		Phenylalanine	0.88	Biotin	720	$\mu$ g
		Phe+Tyr	1.49	Choline	1,450	mg
		Glycine	0.86			
		Glutamic acid	4.00	<b>Trace elements</b>	<b>per</b>	<b>kg</b>
		Aspartic acid	1.85	Iron	185	mg
		Proline	1.29	Manganese	62	mg
		Serine	0.98	Zinc	88	mg
		Alanine	0.88	Copper	15	mg
				Iodine	2.1	mg
				Selenium	0.3	mg

## Dietary composition

Wheat and wheat products, soybean products, barley, corn (maize), minerals, sunflower meal sugar beet pulp, whey powder, brewer's yeast, vitamins & trace elements, soybean oil, L-lysine HCl, DL-methionine.

## Main products

Product Code	Product Description	Bag size
V1524-000	10 mm pellets	10 kg
V1524-300	10 mm, autoclavable	10 kg
V1524-703	10 mm, $\gamma$ -irradiated 25 kGy	10 kg + PE
V1524-786	10 mm, $\gamma$ -irradiated 25 kGy	3 x 6.5 kg Vacubag

## Production and Sale

ssniff Spezialdiäten GmbH  
 Phone: +49-(0)2921-9658-0  
 Fax: +49-(0)2921-9658-40  
 E-Mail: mail@ssniff.de  
[www.ssniff.de](http://www.ssniff.de) / [www.ssniff.com](http://www.ssniff.com)

# Rat Breeding

fortified (autoclavable /  $\gamma$ -irradiated)

Complete feed for rats (& mice)

ssniff



## Description

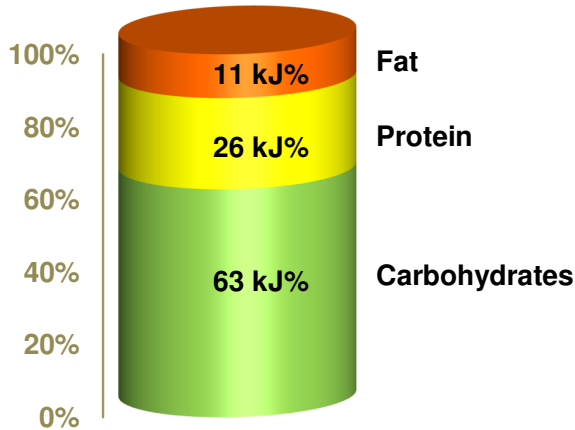
This diet has been designed for breeding of rats; however, it can also be used for mice strains with lower energy requirements. The nutrient contents and energy density are adjusted to the high performance during gestation and lactation.

*The diet is intended for ad libitum feeding. The animals should have free access to fresh water.*

**Gross Energy (GE)** 16.4 MJ/kg  
**Metabolizable Energy (ME)** <sup>1)</sup> 13.7 MJ/kg

<sup>1)</sup> = Physiological fuel value (Atwater); correspond to 3,270 kcal/kg

ME - pig = 13.1 MJ/kg (old: 13.2 MJ/kg)



Crude Nutrients	[%]
Crude protein (N x 6.25)	21.1
Crude fat	3.9
Crude fibre	4.5
NDF	15.9
ADF	6.8
Crude ash	6.6
Starch	33.4
Sugar	5.8
N free extracts	52.1

Minerals	[%]
Calcium	1.00
Phosphorus	0.70
Ca / P	1.43: 1
Sodium	0.25
Magnesium	0.23
Potassium	1.01

Amino acids	[%]
Lysine	1.29
Methionine	0.46
Cystine	0.38
Met+Cys	0.84
Threonine	0.80
Tryptophan	0.28
Arginine	1.34
Histidine	0.56
Valine	1.03
Isoleucine	0.92
Leucine	1.58
Phenylalanine	1.01
Phe+Tyr	1.71
Glycine	0.97
Glutamic acid	4.49
Aspartic acid	2.10
Proline	1.38
Serine	1.13
Alanine	0.96

Vitamins	per kg
Vitamin A	25,000 IU
Vitamin D <sub>3</sub>	1,500 IU
Vitamin E	135 mg
Vitamin K (as MNB)	20 mg
Thiamine (B <sub>1</sub> )	86 mg
Riboflavin (B <sub>2</sub> )	32 mg
Pyridoxine (B <sub>6</sub> )	31 mg
Cobalamin (B <sub>12</sub> )	150 µg
Nicotinic acid	152 mg
Pantothenic acid	60 mg
Folic acid	10 mg
Biotin	710 µg
Choline	1,400 mg

Fatty acids	[%]
C 12:0	—
C 14:0	0.01
C 16:0	0.48
C 18:0	0.10
C 20:0	0.01
C 16:1	0.02
C 18:1	0.79
C 18:2	2.02
C 18:3	0.24

Trace elements	per kg
Iron	189 mg
Manganese	67 mg
Zinc	93 mg
Copper	14 mg
Iodine	2.1 mg
Selenium	0.3 mg

## Dietary composition

Wheat products, soybean products, barley, corn (maize), minerals, vitamins & trace elements, soybean oil, L-lysine HCl, DL-methionine.

## Main products

Product Code	Product Description	Bag size
V1324-300	10 mm, autoclavable	10 kg
V1324-703	10 mm, $\gamma$ -irradiated 25 kGy	10 kg + PE
V1325-318	15 mm, autoclavable	700 kg (tote bag)

## Production and Sale

ssniff Spezialdiäten GmbH  
 Phone: +49-(0)2921-9658-0  
 Fax: +49-(0)2921-9658-40  
 E-Mail mail@ssniff.de  
[www.ssniff.de](http://www.ssniff.de) / [www.ssniff.com](http://www.ssniff.com)

# Mouse - Breeding extrudate

ssniff

Complete feed for mice (& rats) – fortified



## Description

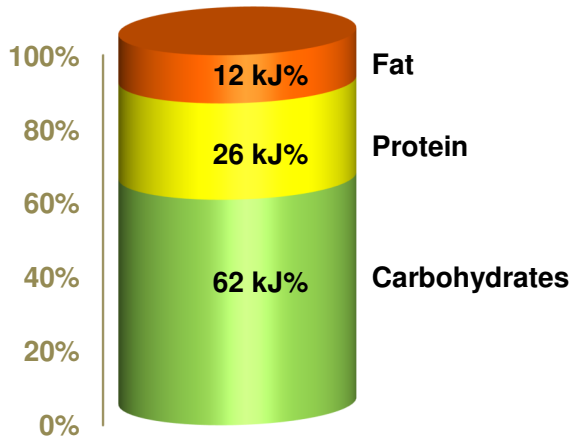
This diet has been designed for the breeding of mice and rats. The dietary protein content and quality (amino acid composition) as well as the energy density are adjusted to the high performance during reproduction. Moreover, the digestibility and palatability of the diet are improved by the extrusion process.

*The diet is intended for ad libitum feeding. The animals should have free access to fresh water*

**Gross Energy (GE)** 17.1 MJ/kg  
**Metabolizable Energy (ME)** <sup>1)</sup> 14.3 MJ/kg

<sup>1)</sup> = Physiological fuel value (Atwater); correspond to 3,430 kcal/kg

ME - pig = 13.9 MJ/kg (old: 13.8 MJ/kg)



Crude Nutrients	[%]
Crude protein (N x 6.25)	22.0
Crude fat	4.8
Crude fibre	4.1
NDF	12.4
ADF	5.5
Crude ash	6.5
Starch	35.4
Sugar	4.3
N free extracts	52.8

Minerals	[%]
Calcium	1.00
Phosphorus	0.70
Ca / P	1.43 : 1
Sodium	0.25
Magnesium	0.20
Potassium	0.96

Amino acids	[%]
Lysine	1.47
Methionine	0.50
Cystine	0.38
Met+Cys	0.88
Threonine	0.80
Tryptophan	0.27
Arginine	1.38
Histidine	0.56
Valine	1.05
Isoleucine	0.91
Leucine	1.72
Phenylalanine	1.06
Phe+Tyr	1.85
Glycine	1.02
Glutamic acid	4.38
Aspartic acid	2.10
Proline	1.39
Serine	1.10
Alanine	1.01

Vitamins	per kg
Vitamin A	25,000 IU
Vitamin D <sub>3</sub>	1,500 IU
Vitamin E	135 mg
Vitamin K (as MNB)	20 mg
Thiamine (B <sub>1</sub> )	85 mg
Riboflavin (B <sub>2</sub> )	33 mg
Pyridoxine (B <sub>6</sub> )	30 mg
Cobalamin (B <sub>12</sub> )	150 µg
Nicotinic acid	132 mg
Pantothenic acid	59 mg
Folic acid	10 mg
Biotin	680 µg
Choline	1,690 mg

Fatty acids	[%]
C 12:0	—
C 14:0	0.01
C 16:0	0.62
C 18:0	0.13
C 20:0	0.02
C 16:1	0.02
C 18:1	1.13
C 18:2	2.58
C 18:3	0.28

Trace elements	per kg
Iron	198 mg
Manganese	60 mg
Zinc	88 mg
Copper	15 mg
Iodine	2.1 mg
Selenium	0.3 mg

## Dietary composition

Wheat, soybean products, corn (maize) products, oat middlings, minerals, soybean oil, sugar beet pulp, vitamins & trace elements, L-lysine HCl, DL-methionine.

## Main products

V1126-000	Extrudates (app. Ø 16 mm)	10 kg PE
V1126-037	Extrudates (app. Ø 16 mm)	5 kg Alubag
V1127-000	Meal / ground extrudates	10 kg PE

## Bag size

## Production and Sale

ssniff Spezialdiäten GmbH  
 Phone: +49-(0)2921-9658-0  
 Fax: +49-(0)2921-9658-0  
 E-Mail: [mail@ssniff.de](mailto:mail@ssniff.de)  
[www.ssniff.de](http://www.ssniff.de) / [www.ssniff.com](http://www.ssniff.com)

# Mouse Breeding, High Energy

fortified (non-sterilized / autoclavable /  $\gamma$ -irradiated)

Complete feed for mice with high requirements

**ssniff**



## Description

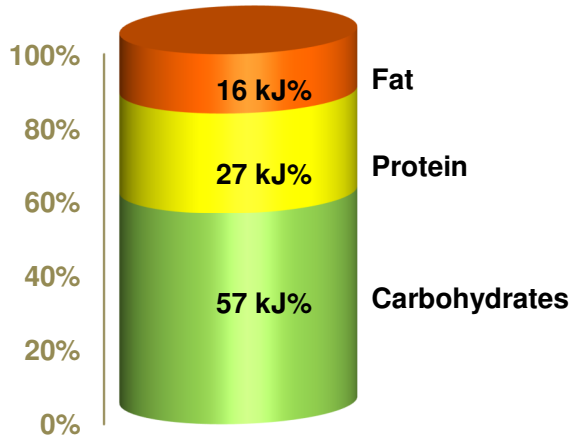
This diet has been designed for the breeding (maintenance) of mouse strains with higher energy requirements. It is characterized by high energy and crude protein contents.

*The diet is intended for ad libitum feeding. The animals should have free access to fresh water*

**Gross Energy (GE)** 17.1 MJ/kg  
**Metabolizable Energy (ME)** <sup>1)</sup> 14.4 MJ/kg

<sup>1)</sup> = Physiological fuel value (Atwater); correspond to 3,440 kcal/kg

ME - pig = 14.1 MJ/kg (old: 14.3 MJ/kg)



Crude Nutrients	[%]
Crude protein (N x 6.25)	23.0
Crude fat	6.1
Crude fibre	3.3
NDF	11.3
ADF	5.2
Crude ash	6.5
Starch	34.1
Sugar	5.1
N free extracts	49.8

Minerals	[%]	Amino acids	[%]	Vitamins	per kg
Calcium	1.00	Lysine	1.57	Vitamin A	25,000 IU
Phosphorus	0.70	Methionine	0.54	Vitamin D <sub>3</sub>	1,500 IU
Ca / P	1.43 : 1	Cystine	0.40	Vitamin E	135 mg
Sodium	0.23	Met+Cys	0.94	Vitamin K (as MNB)	20 mg
Magnesium	0.22	Threonine	0.89	Thiamine (B <sub>1</sub> )	86 mg
Potassium	1.03	Tryptophan	0.29	Riboflavin (B <sub>2</sub> )	33 mg
		Arginine	1.50	Pyridoxine (B <sub>6</sub> )	32 mg
		Histidine	0.61	Cobalamin (B <sub>12</sub> )	150 µg
		Valine	1.12	Nicotinic acid	140 mg
		Isoleucine	1.02	Pantothenic acid	58 mg
		Leucine	1.79	Folic acid	10 mg
		Phenylalanine	1.12	Biotin	690 µg
		Phe+Tyr	1.91	Choline	1,400 mg
		Glycine	1.05		
		Glutamic acid	4.83	<b>Trace elements</b>	<b>per kg</b>
		Aspartic acid	2.42	Iron	180 mg
		Proline	1.50	Manganese	58 mg
		Serine	1.26	Zinc	86 mg
		Alanine	1.08	Copper	15 mg
				Iodine	2.1 mg
				Selenium	0.3 mg

## Dietary composition

Wheat and wheat products, soybean products, corn (maize), minerals, soybean oil, brewer's yeast, vitamins & trace elements, L-lysine HCl, DL-methionine.

## Main products

Product Code	Product Description	Bag size
V1184-000	10 mm pellets	10 kg
V1184-300	10 mm, autoclavable	10 kg
V1185-000	15 mm pellets	10 kg
V1185-300	15 mm, autoclavable	10 kg
V1185-703	15 mm, $\gamma$ -irradiated 25 kGy	10 kg + PE bag
V1185-727	15 mm, $\gamma$ -irradiated 25 kGy	5 x 3 kg Vacubag

## Production and Sale

ssniff Spezialdiäten GmbH  
 Phone: +49-(0)2921-9658-0  
 Fax: +49-(0)2921-9658-40  
 E-Mail: [mail@ssniff.de](mailto:mail@ssniff.de)  
[www.ssniff.de](http://www.ssniff.de) / [www.ssniff.com](http://www.ssniff.com)

# Mouse Breeding – Low phytoestrogen

**ssniff**

fortified (non-sterilized / autoclavable /  $\gamma$ -irradiated)

Complete feed for mice (rats) without soybean and alfalfa products



## Description

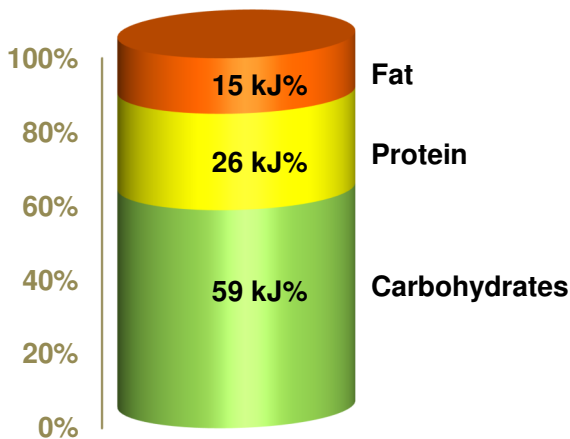
This diet has been designed for the breeding of mice, and is therefore characterized by high protein and energy contents. The feed contains not any soybean or alfalfa product resulting in very low concentrations (traces) of the phytoestrogens genistein, daidzein and coumestrol which make this diet suitable for studies on the effects of oestrogens and similar substances (endogen disrupters).

*The diet is intended for ad libitum feeding. The animals should have free access to fresh water.*

**Gross Energy (GE)** 17.1 MJ/kg  
**Metabolizable Energy (ME)** <sup>1)</sup> 14.3 MJ/kg

<sup>1)</sup> = Physiological fuel value (Atwater); correspond to 3,410 kcal/kg

ME - pig = 13.7 MJ/kg (old: 13.5 MJ/kg)



Crude Nutrients	[%]
Crude protein (N x 6.25)	22.2
Crude fat	5.5
Crude fibre	4.4
NDF	17.9
ADF	6.1
Crude ash	5.9
Starch	31.9
Sugar	3.4
N free extracts	50.7

Minerals	[%]	Amino acids	[%]	Vitamins	per	kg
Calcium	1.00	Lysine	1.35	Vitamin A	25,000	IU
Phosphorus	0.70	Methionine	0.52	Vitamin D <sub>3</sub>	1,500	IU
Ca / P	1.43 : 1	Cystine	0.42	Vitamin E	135	mg
Sodium	0.22	Met+Cys	0.94	Vitamin K (as MNB)	20	mg
Magnesium	0.23	Threonine	0.95	Thiamine (B <sub>1</sub> )	85	mg
Potassium	0.71	Tryptophan	0.27	Riboflavin (B <sub>2</sub> )	32	mg
		Arginine	1.15	Pyridoxine (B <sub>6</sub> )	30	mg
<b>Fatty acids</b>	<b>[%]</b>	Histidine	0.54	Cobalamin (B <sub>12</sub> )	150	$\mu$ g
C 12:0	—	Valine	1.23	Nicotinic acid	160	mg
C 14:0	0.01	Isoleucine	0.98	Pantothenic acid	59	mg
C 16:0	0.70	Leucine	2.09	Folic acid	9	mg
C 18:0	0.17	Phenylalanine	1.19	Biotin	720	$\mu$ g
C 20:0	0.02	Phe+Tyr	2.16	Choline	1,290	mg
C 16:1	0.03	Glycine	1.05			
C 18:1	1.22	Glutamic acid	4.10	<b>Trace elements</b>	<b>per</b>	<b>kg</b>
C 18:2	3.02	Aspartic acid	2.05	Iron	192	mg
C 18:3	0.34	Proline	1.65	Manganese	65	mg
		Serine	1.16	Zinc	94	mg
		Alanine	1.30	Copper	15	mg
				Iodine	2.1	mg
				Selenium	0.4	mg

## Dietary composition

Wheat and wheat products, barley, corn gluten, sunflower meal, potato protein, minerals, brewer's yeast, vitamins & trace elements, vegetable oil, L-lysine HCl, DL-methionine.

## Main products

Product Code	Product Description	Bag size
V1154-000	10 mm pellets	10 kg
V1154-300	10 mm, autoclavable	10 kg
V1154-318	10 mm, autoclavable	app. 700 kg big bags
V1154-703	10 mm, $\gamma$ -irradiated 25 kGy	10 kg + PE

## Production and Sale

ssniff Spezialdiäten GmbH  
 Phone: +49-(0)2921-9658-0  
 Fax: +49-(0)2921-9658-40  
 E-Mail: mail@ssniff.de  
[www.ssniff.de](http://www.ssniff.de) / [www.ssniff.com](http://www.ssniff.com)